

PYLE

PyleUSA.com



PDMIKT200

Computer Desktop Microphone

Streaming & Pro Audio Recording Mic Kit
with Shock Mount Stand, Easy USB Plug-and-Play
(for Podcast Recording, Streaming, Gaming)

User Manual

READ THE OPERATING INSTRUCTIONS CAREFULLY BEFORE USING THE DEVICE.

What's in the Box:

- USB Microphone
- Mic Shock Mount
- Desktop Mic Stand
- Pop Filter
- USB Cable
- Foam Cover
- Storage / Travel Case



SAFETY AND CARE

- Do not expose the microphone to high temperatures or frost, moisture, water or other liquids, corrosives, poles or shocks.
- Do not use the appliance if it is damaged or if you suspect that it is not working properly, but stop using it indiscriminately and ask your dealer or authorized service center for more information.
- There are no user serviceable parts inside. Have the broken device serviced.
- Children 8 years of age and older and persons with limited physical, sensory, mental or lack of experience and knowledge should only use this device if they are supervised or instructed in the safe use of the device and are aware of the hazards involved. Children are not allowed to play with the appliance. Children must not carry out cleaning and user maintenance without supervision.
- Do not use cleaning agents, solvents, or alcohol to clean the device, as they may damage the surface of the device. Wipe the device clean with a soft cloth after use.
- The device must be recycled at the end of its effective life.

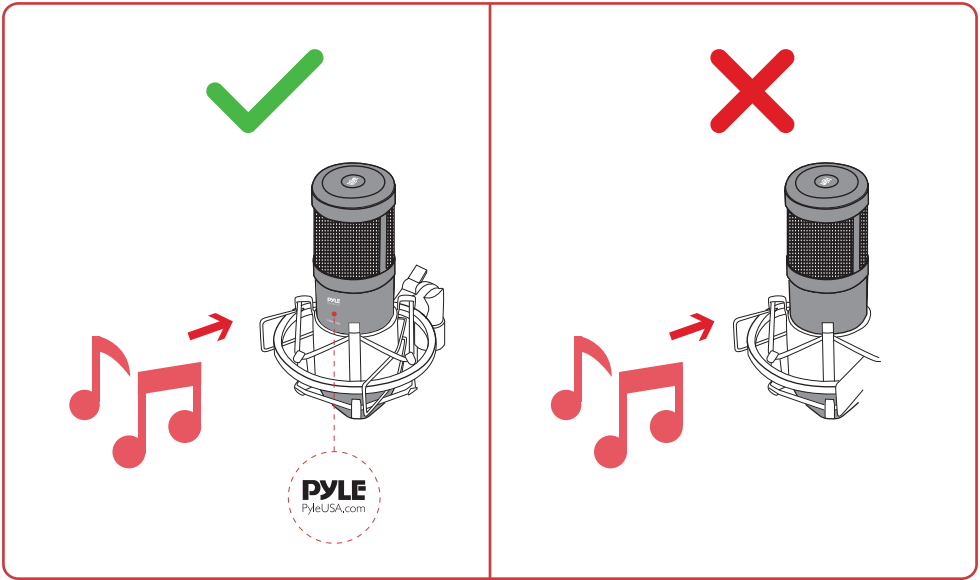
ASSEMBLING AND USING THE DEVICE

1. Carefully screw the microphone holder onto the table stand base.
Tighten it to the correct position.
2. Carefully place the microphone onto the shock mount.
3. Carefully screw the shock mount onto the holder.
4. Carefully place the pop filter to your desired position.
5. Connect one end of the USB cable to the USB B connector on the microphone and the other end to the computer. The microphone light will be lit. The computer will automatically detect the microphone and install the necessary drivers.
6. You can mute the microphone by pressing the button on the top of the microphone. The microphone light turns red when the microphone is muted.



NOTE:

The product does not come with playback or playback software.



SAFE DISPOSAL OF THE PRODUCT



The appliance or its accessories must not be disposed of with normal household waste at the end of their life cycle. Return the device for recycling to your retailer or local recycling facility. contact your dealer or waste disposal company for more information.



FEATURES:

- Pro Audio Broadcasting Desktop Microphone
- Simple USB 'Plug-and-Play' Operation
- Connects to Your Computer for Hassle-Free Sound Control
- Used for Podcasts, Gaming, Streaming, Recording, Audio Editing
- Lab Tested for Stage & Studio-Quality Performance
- Crisp Vocal Pickup, High-Precision Audio Clarity
- Gooseneck Adjustable Pop Filter
- Detachable USB Cable
- Compact Mic Style
- Freestanding Placement on Any Desktop, Counter, Table
- Includes Portable High-Quality Plastic Flight Case for Quick Transport & Set-Up
- Universal Computer Compatibility: Works with PC, Mac, Linux
- For Home, Office & Business Use
- Fast Mute Switch on Top
- With LED Indicator (Blue-working, Red-mute)

TECHNICAL SPECS:

- Connection Interface: USB type B
- Pickup/Polar Pattern: Cardioid
- Microphone Type: Back Electret Condenser
- Frequency Response: 30-18KHz
- Sensitivity: -36dB +/- 2dB (0dB=1V/Pa at 1KHz)
- S/N Ratio: 74dB
- Max SPL: 94dB
- Mic Gain: -16dB (45dB Max)
- Bit Depth: 16 bit
- Sampling Rate: up to 48KHz
- Computer Operating System Support: Windows XP, Vista, 7, 8, 10, Mac OS X, Linux
- Mic Construction Material: Engineered Metal Alloy, Metal Iron Base
- Power Output: USB Powered, 100 mA
- USB Cable Length: 5.4' ft.
- Microphone Base Diameter: 6.0" -inches
- Microphone Dimensions (L x W x H): 1.65" x 1.65" x 6.5" -inches
- Total Assembled Dimensions (L x W x H): 7" x 5.9" x 12.2" -inches



PYLE

PyleUSA.com



VISIT US ONLINE:

Have a question?

Need service or repair?

Want to leave a comment?

PyleUSA.com/ContactUs

PYLE

Questions? Issues?

We are here to help!

Phone: (1) 718-535-1800

Email: support@pyleusa.com