

SereneLife

SereneLife



PDUMID95

Portable Energy-Saver Dehumidifier
Ultra-Quiet & Electric Small Dehumidifier,
3 Pints Volume Capacity, Space Up to 322 Sq. ft.
for Bedroom, Bathroom, RV, Closet & Basement

Questions? Issues?

We are here to help!

Phone: (1) 718-535-1800

Email: support@pyleusa.com

USER MANUAL

Congratulations for purchasing the **Serenelife Portable Energy-Saver Dehumidifier**.

This User Guide is intended to provide you with guidelines to ensure that operation of this product is safe and does not pose risk to the user. Any use that does not conform to the guidelines described in this User Guide may void the limited warranty.

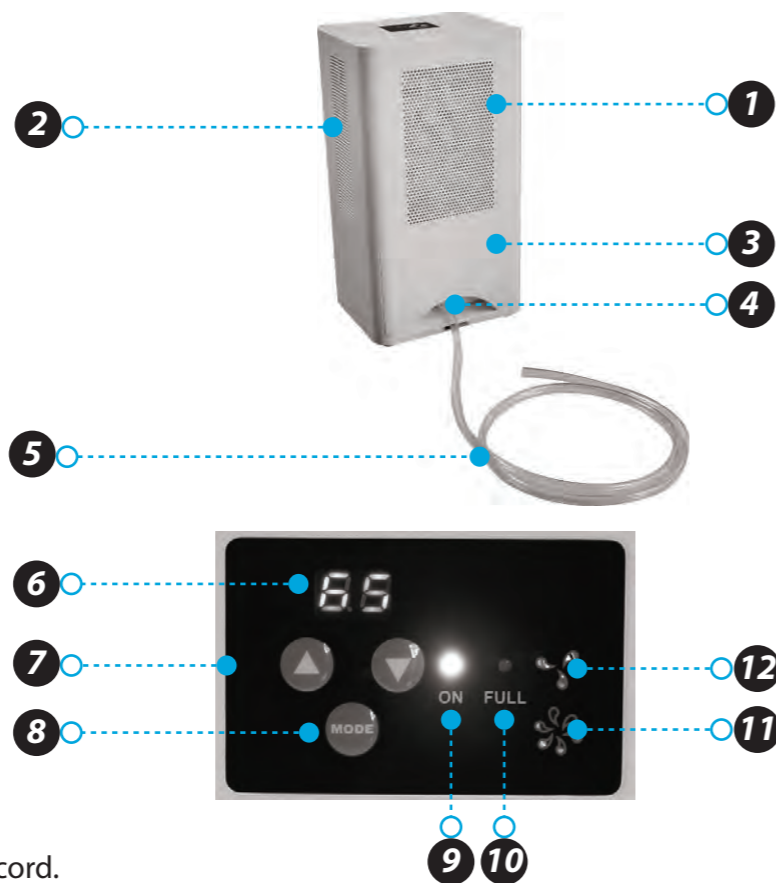
Please read all directions before using the product and retain this guide for reference.

This product is intended for household use only.

This product is covered by a limited one-year warranty. Coverage is subject to limits and exclusions. See warranty for details.

Parts

1. Base unit
2. Vents
3. Reservoir
4. Drain hose port
5. Drain hose



Control Panel

6. Humidity display
7. Humidity controls
8. MODE button
9. ON indicator light
10. FULL indicator light
11. High fan indicator light
12. Low fan indicator Light

Safety Precautions

- Do not exceed the unit's rated power.
- Do not use a damaged or unspecified power cord.
- Do not modify the cord length or share the outlet with other appliances.
- Do not handle the plug with wet hands.
- Do not install the unit in a place where it may be exposed to combustible gas.
- Do not place the unit near a heat source.
- Disconnect the power if unusual sounds, smells, or smoke comes from the unit.
- Never attempt to take apart or repair the unit.
- Before cleaning the unit, always turn off the power and unplug.
Do not drink or use the water drained from the unit.
- Do not place the unit in a place where it may become wet or damp.
- Always place the unit on a level, stable section of the floor.
- Do not cover the intake or exhaust vents with cloths or towels.
- Keep out of reach of children and pets.
- Do not use in areas where chemicals are handled.
- Never insert fingers or other foreign objects into the vents or openings.
- Do not place heavy objects on the power cord.
- Do not climb on or sit on the unit.
- If water enters the unit, turn it off and disconnect the power. Contact a qualified service technician.

Operation

1. Press the **MODE** button to power the unit on. The **ON** indicator light will turn on.
2. Use the humidity controls to adjust the humidity as needed.
3. To switch the fan speed between high and low, hold down the **MODE** button until the indicator light for either high or low speed turns on.

Emptying the Reservoir

1. When the reservoir is full, the **FULL** indicator light will turn on and the unit will automatically stop operation.
2. Pull the reservoir out from the back of the unit and empty.
The unit will pause operation until the reservoir is replaced.

Continuous Draining

1. Remove the drain plug on the back of the reservoir:
2. Attach the included drain hose to the unplugged drain.
3. Lead the hose to the floor drain or a suitable drainage facility.

Care and Maintenance

- Always turn the dehumidifier off and unplug before cleaning.
- The reservoir should be washed with fresh water every few weeks.

Features:

- Designed to Dehumidify a Room Up to 322 Square Feet
- 3 Pints Volume Capacity
- Built-in Ventilation Fan for Extended Air Flow
- LED Indicator Lights
- Efficient Room Moisture Control
- Regulates Humidity & Air Dampness
- Helps to Eliminate Odors & Fungus
- Breathe Healthier with Fresh Air
- Lightweight & Compact Size
- Simple One-Switch Button Activation
- Low Energy Consumption
- Built-in Air Filtration System
- Ultra-Quiet Operation
- Easy Removable Water Tank
- Automatic Power Off with Full Tank
- No Harsh Chemicals or Solutions Required
- Used for Bedrooms, Bathrooms, Kitchens, Closets
- Includes Desktop Power Adapter

Technical Specs:

- Rated Power: 15V
- Rated Current: 6A
- Water Tank Capacity: 101 Oz.
- Effective Dehumidifying for Rooms up to 3 Pints and 322 Sq. ft.
- High-Powered Power Output: 90 Watt
- Moisture Removal: 3 pints/day (1.5 L/day)
- Water Reservoir Capacity: 0.8 gal. (3L)
- Product Dimension: 9.4" x 17" x 7.5" -inches

What's in the Box:

- Portable Dehumidifier
- Reservoir
- Drain Hose

