

PEL88 Flameless Coil Lighter

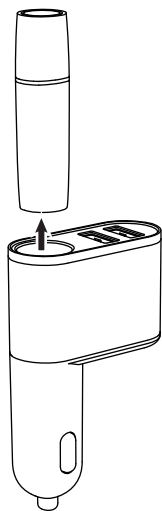
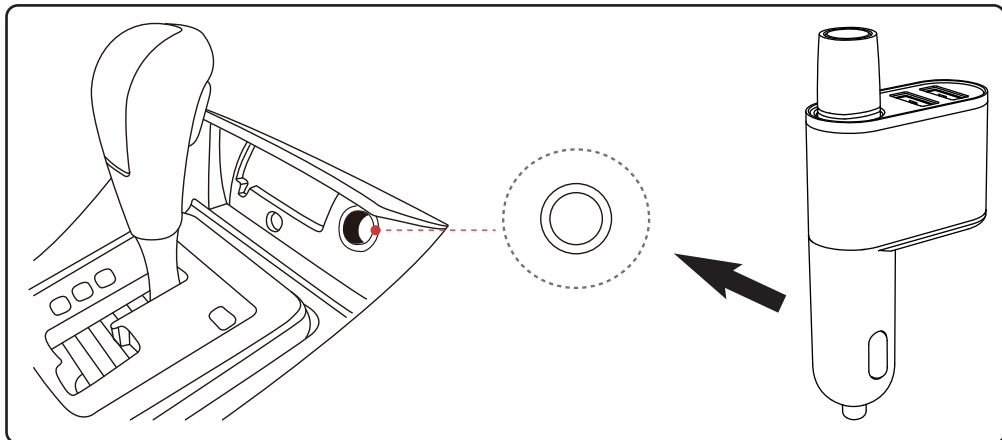
Electric E-Lighter with Dual USB Device Charge Ports
(Charges via Car Cigarette Lighter Plug)

PYLE
PyleUSA.com

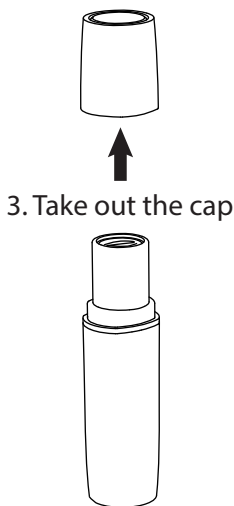
USER GUIDE

Operation Instructions:

1. Put the charger into the cigarette hole for charging.



2. Take out the e-lighter from the charging hole



4. Hold the E-lighter and blow slightly into the hole to trigger the lighter.

Features:

- Digital Electronic Lighter
- Flameless Coil Cigarette Lighter Style
- Charges via Car /Truck Cigarette Lighter Power Outlet
- Unique Plasma Arc Heat Technology
- Instant Heating, Lights Fire in Seconds
- Hassle-Free Fire: No Lighter Fluid or Refills Needed
- Slim, Sleek & Stylish Form-Fitting Size
- E-Lighter Conveniently from the Charging Base
- Dual USB Device Charge Ports
- Charges All of Today's Latest Devices
- Built-in Rechargeable Battery
- Simple Electric Plug-in Design
- Lightweight, Compact & Portable
- Windproof Housing for Reliable Lighting
- Charging LED Indicator Light
- Perfect for Car, Truck, Trailer, Van, Mobile Vehicles
- *USB Power Charging is Limited to 5V/3.6A When Both USB Ports are Being Used



What's In The Box:

- Flameless E-Lighter
- Car Plug Charge Base

Technical Specs:

- Power Output: 18 Watt MAX
- Construction Material: Engineered ABS, Aluminum Metal Alloy
- Charging Time: About 1 Hour
- Battery Life: Up to 20+ Times (Before It Needs a Charge)
- Rechargeable Battery, 3.7V Li-iOn, 90mAh
- Dual USB Ports Charger Power: 5V / 2.4A (Each), 3.6A Max
- Power Supply: 12/24V
- Charger Base Size (L x W x H): 3.1" x 1.9" x 0.8" -inches
- E-Lighter Size (L x W x H): 2.1" x 0.6" x 0.4" -inches

Questions? Issues?

We are here to help!

Phone: (1) 718-535-1800

Email: support@pyleusa.com