

**Indoor Wireless/Wired HD P2P Network Camera Pro.
(with H.264 image compression)**



Instruction Manual

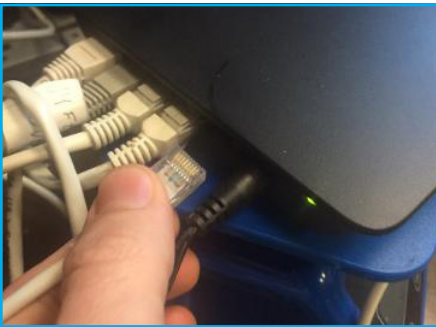
WIRED SETUP

1. Plug your camera into AC power



2. Plug your camera directly into your router with wired Ethernet wire (included)

NOTE: Wired Ethernet is required for setup. Wireless will be configured later.



NOTE: Wait 2-3 minutes for camera to boot. You will see the camera run through a full range of pan and tilt motion.

3. When boot up completes, your camera's ethernet port will flash yellow and green lights indicating the camera is connected to your router.

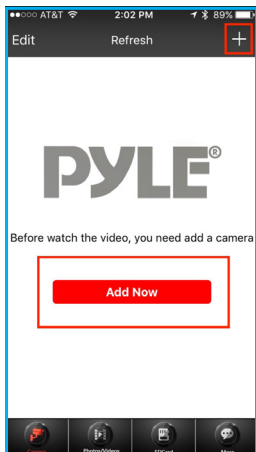


NOTE: If lights are not flickering the camera is not receiving data. Please check for faulty ethernet cable and that your router is working with another device.

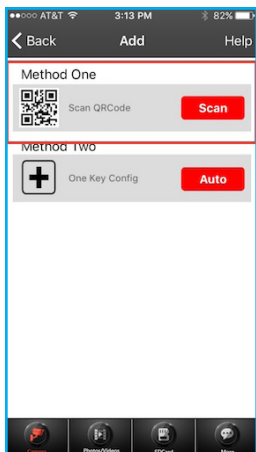
4. Check that you have WIFI enabled in your phone's system settings

WIRED SETUP

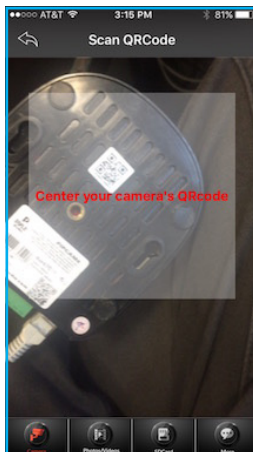
5. Open up the Pyle IP Pro app and select "add camera"



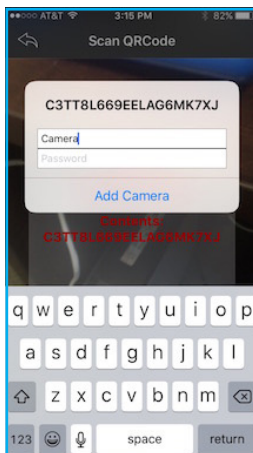
6. Select the option to "Scan QR Code"



7. Scan the QR code on your camera with your smartphone's camera



8. Name your camera to your preference
- Then input the camera default password "pylecam"

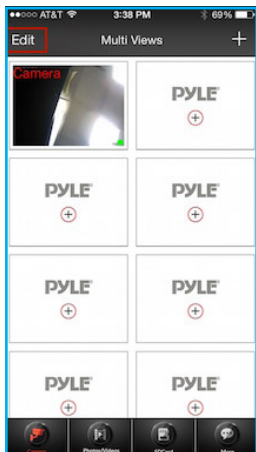


WIRED SETUP

9. Make sure to change the password to a custom password

10. Now navigate to the “Camera” tab to see a list of all of your cameras. Select the newly added camera to check you can see the video feed.

11. Select “Edit” in the top left corner, then “set” on your camera’s entry.



12. Select “WIFI Setting”

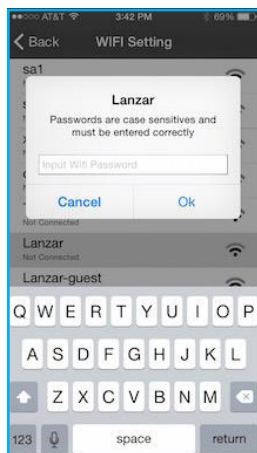
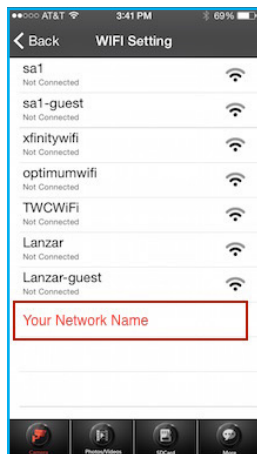


13. Wait for the list of available WIFI networks to appear. Select your home network.

- No networks displayed? Go to www.pipcamwireless.com and search “I am having trouble connecting to WiFi” for more help

WIRED SETUP

14. Add the wireless password for your home router



Note: Passwords are case sensitive and the app isn't smart enough to tell you if you have typed it correctly. If you have any doubt about your home network's password I would recommend troubleshooting the value in your smartphone's WIFI settings before trying to connect the camera.

15. The camera will now reboot. Please wait for the app to countdown from 60 seconds

DO NOT REMOVE THE DATA CABLE FROM THE CAMERA

16. Once the countdown stops, look for the "Connected" to show next to your network



17. Now you can disconnect the wired ethernet cord and move the camera to its desired location

Pyle H.264 Solution Desktop Setup QSG

Find FAQs including setup video and support online at
<http://www.pipcamwireless.com>

This guide covers the following models

- PIPCAM8
- PIPCAMHD17
- PIPCAMHD45
- PIPCAMHD46
- PIPCAMHD47

Before you begin

- *Setup should be done in the same room as the wireless router in your home.
- * Camera and PC must share the same network. Verify the setup PC is on the SAME network as the wireless router in your home.

- 1) Plug your camera into power
- 2) Attach the wireless antenna to your camera (If Applicable)
- 3) Plug your camera directly into your router with wired Ethernet wire



- 4) Wait 2-3 minutes for camera to boot

- You will see the camera run through a full range of pan and tilt motion.
- When boot up completes, your camera's Ethernet port will flash yellow and green lights indicating the camera is connected to your router.



If you do not see the flickering lights - DO NOT CONTINUE

please refer to the FAQ online

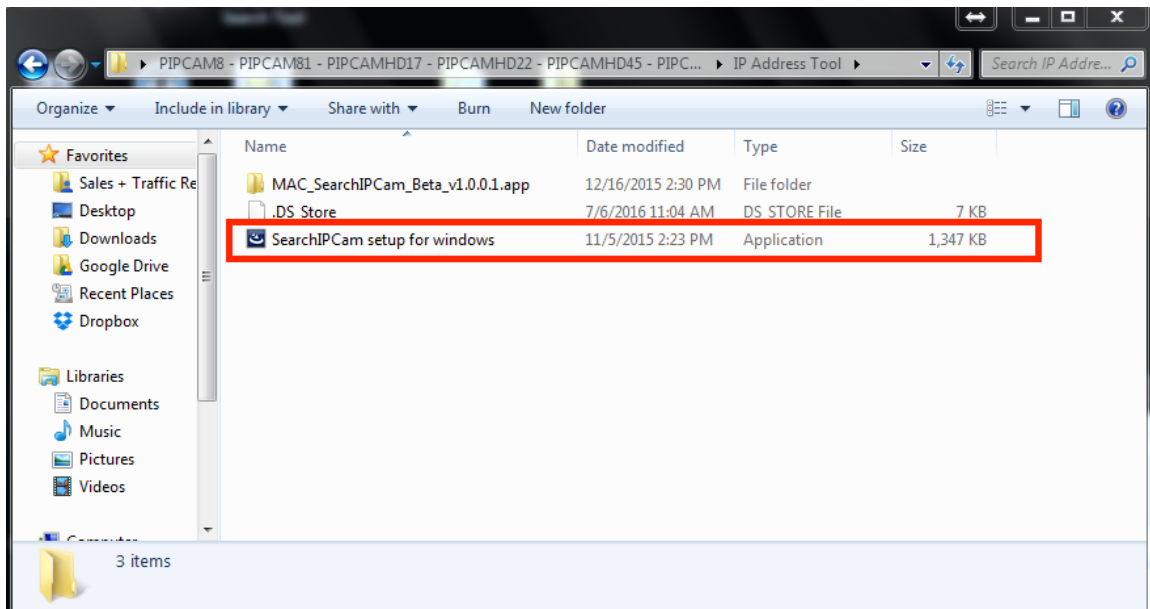
<https://pyleaudio.helpshift.com/a/pyle-ip/?s=general&f=the-green-and-yellow-lights-at-the-back-of-my-camera-do-not-flash-when-plugged-into-power-and-ethernet>

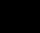
5) Copy/Paste or type the link below into your Internet browser to Download the software package online

www.pyleaudio.com/manuals/drivers/pipcam8.zip

6) Unzip the zip file and select Mac or the other folder depending on your OS

7) Open the “IP Address Tool” folder and install the “SearchIPCam Setup” file on your PC





S-CAM Finder

[illegible]

- Check again your PC and camera are connected to the same wireless network
- Verify you do not have any network security settings that will hide the network
- Try a hardware reset by holding in the camera reset switch for 10 seconds with a pin and retry steps 1 – 4

9) Double Click the `Http://XXX.XXX...` address in the IP Camera tool or copy paste the address into your internet browser

NOTE: Some users may see a blue background in the web UI – while the options may be in slightly different places, the setup process is the same

10) Log in using your camera's default user name and password

USER: admin

PASS: "pylecam" OR "admin"

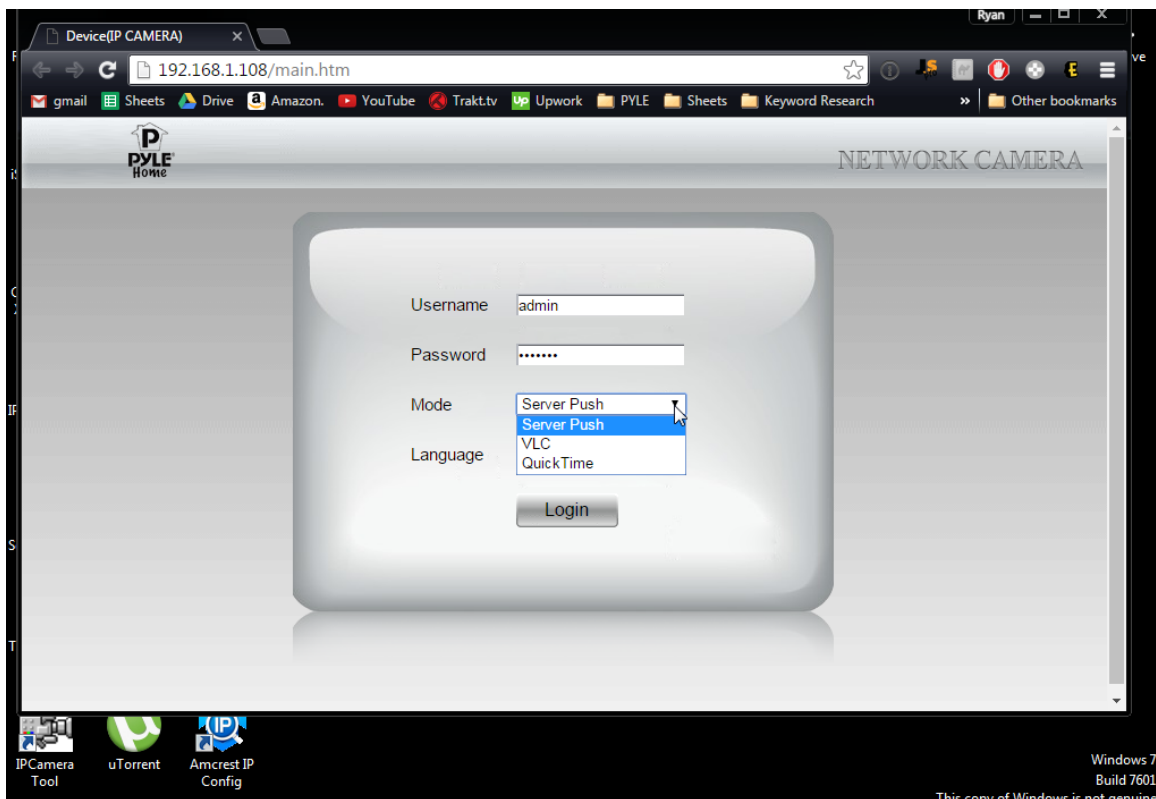
11) Select the login option appropriate for your browser

-Google Chrome: Server Push Mode

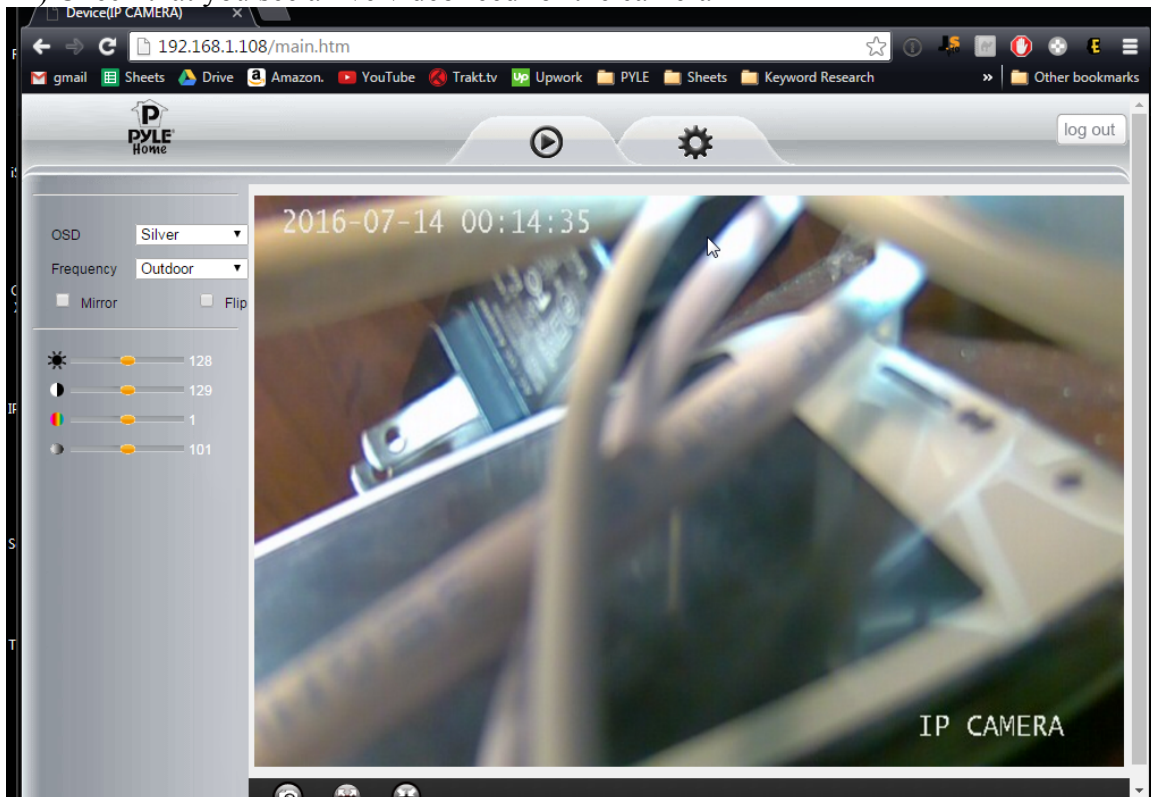
-Internet Explorer: ActiveX Mode

-Safari/Firefox: VLC Mode

-I recommend using Google Chrome for fast initial wireless setup – to continue setting up using Internet Explorer, skip to the link at the end of the guide to learn how to install the Active X plugin – then resume step 12 for wireless configuration



12) Check that you see a live video feed for the camera



No Video?

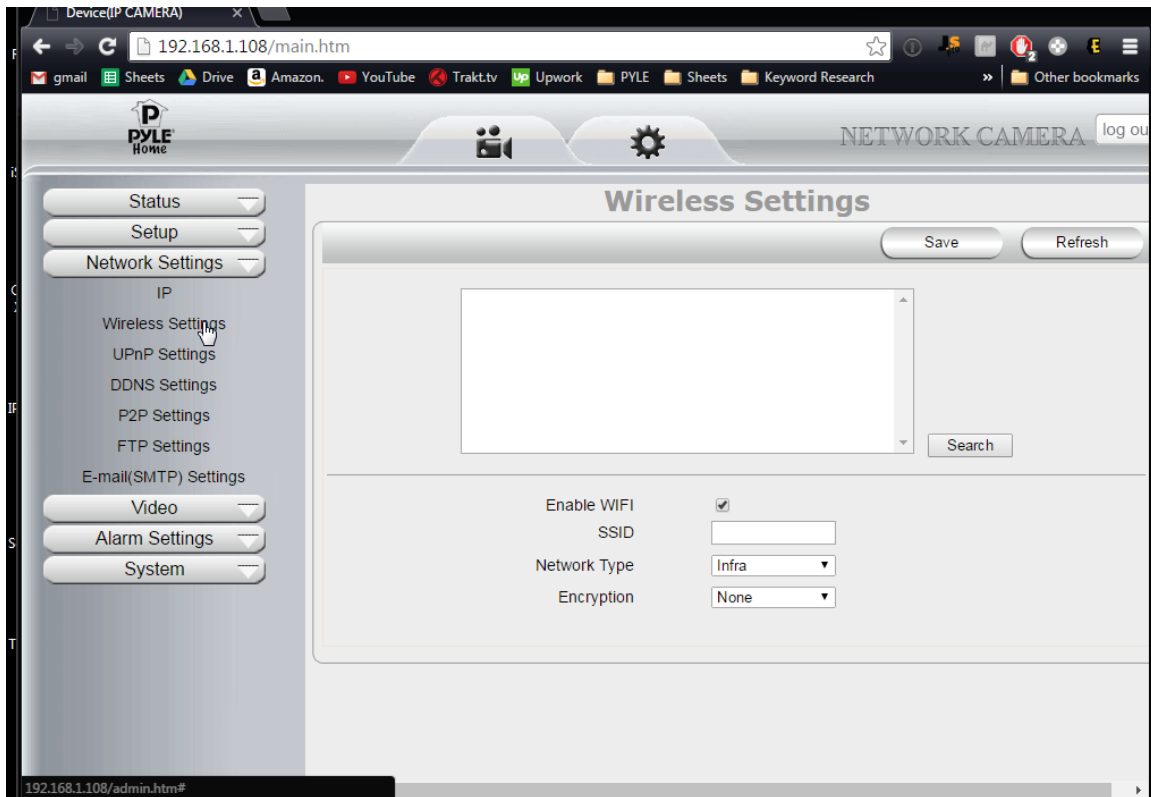
- If you aren't using Google Chrome – back up to step 9 and try logging in using Google chrome in server push mode now
- Your login password may be incorrect – try both default passwords suggested step 11
- If still no video – do a hardware reset to make sure the camera password is set back to default passwords

IE Issues

- Refer to main manual to check computer security settings
- Make sure Activex is installed
- Right click the Internet browser and click “Run as Administrator”

Now we can configure WiFi

- 1) Click the “Gear” icon along the top tab to access the camera's settings
- 2) In the left column - click “Network Settings” > “Wireless Settings”
- 3) Click the “Search” button to display any wireless networks in range



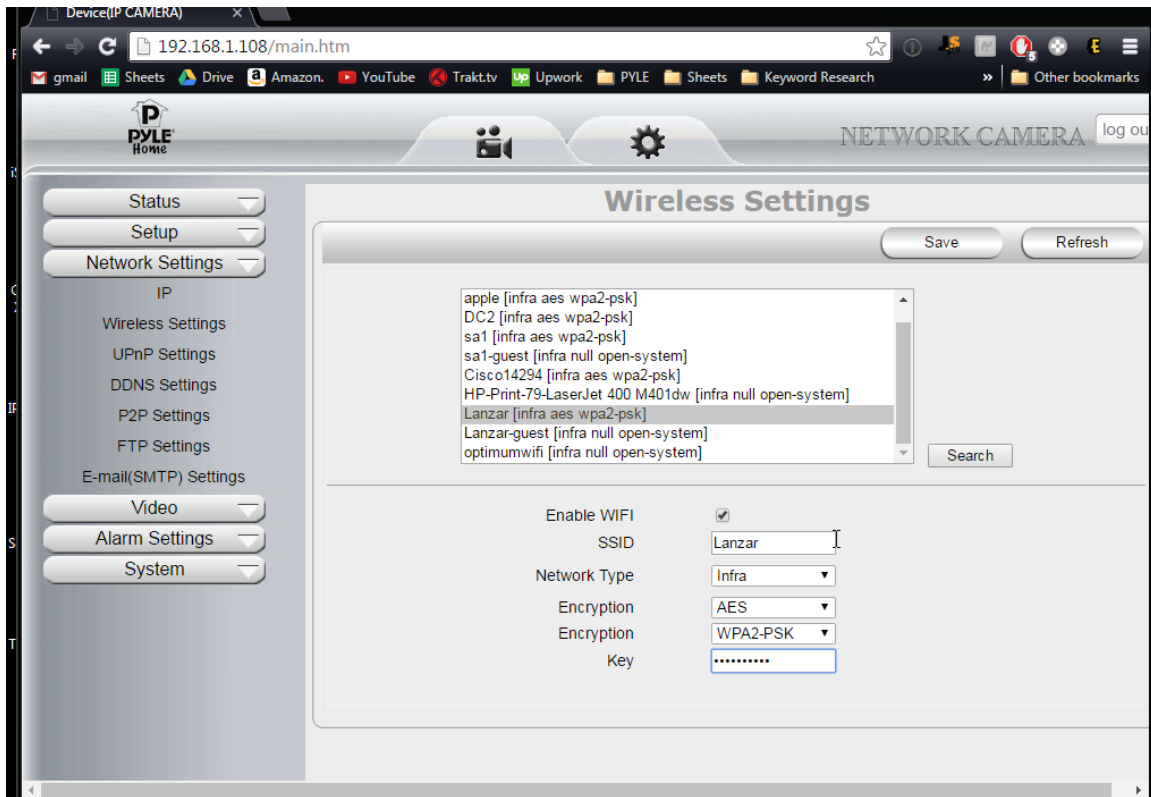
No Networks Detected?

See FAQ online

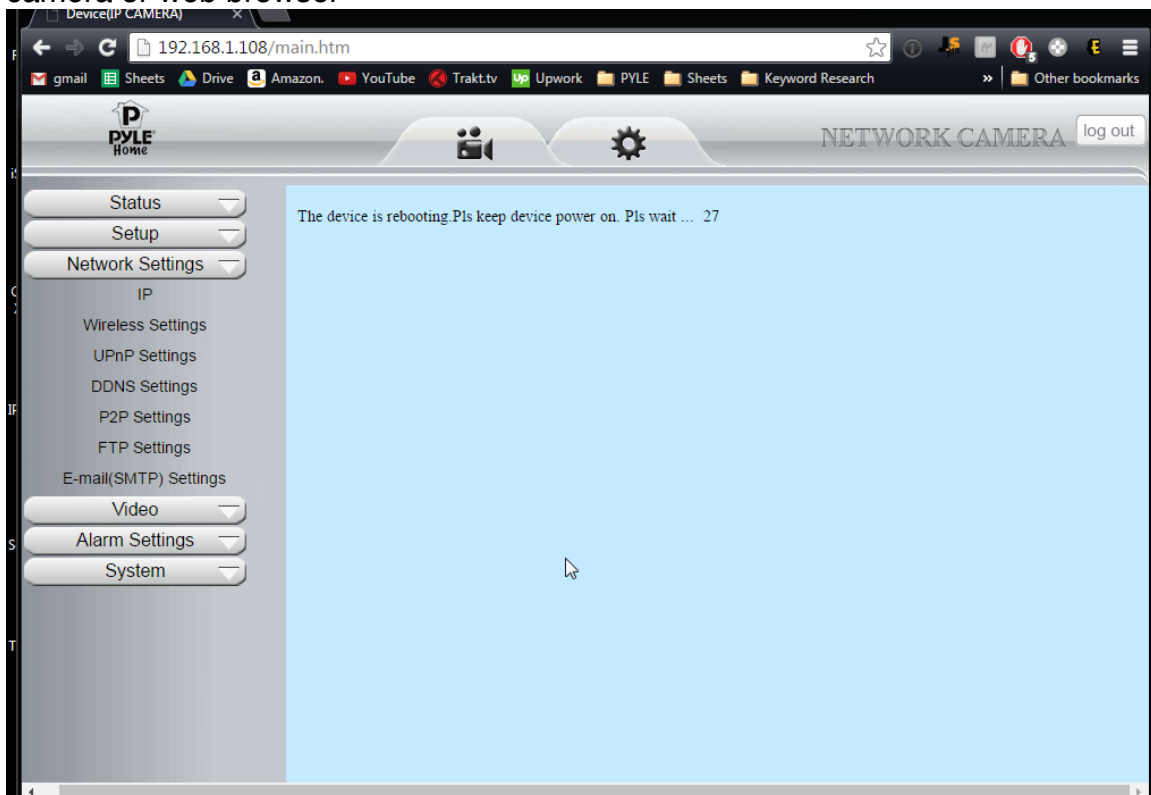
<https://pyleaudio.helpshift.com/a/pyle-ip/?s=general&f=i-don-t-see-any-networks-detected-when-setting-up-wifi>

Or go to the FAQ on pipcamwireless.com and search the FAQ “I don’t see any networks detected”

4) Click on your router’s name in the list – then enter your router’s wireless password in the “Key” field – click “Save”



5) Allow the camera to load – wait for the countdown to run before adjusting the camera or web browser



DON'T UNPLUG YOUR CAMERA POWER CABLE YET

5) Now let's test the wireless connection in the same room as your wireless router before moving the camera to the final location
-Leaving the power plugged in - Disconnect the wired Ethernet cable and wait

6) Wait 2-3 minutes for the camera to reboot
-I know - it doesn't look like it is doing anything... But wait a bit before trying to adjust the camera or refresh the app

PIPCAM5

You should see the white LED indicator go out as soon as you pull out the network cable - after 1-2 min the LED indicator should come back on rapidly flashing

Troubleshooting

If the camera does not connect wireless after 2-3 mins un-plugged from the data cable - Reconnect the wired Ethernet cable and try

1) Setting the wireless password again

-Check password is entered correctly - Passwords are case sensitive - the app will not give you "incorrect wifi password" indication

2) Try a hardware reset

Instructions available on our FAQ online

<http://pyleaudio.helpshift.com/a/pyle-ip/?s=general&f=how-can-i-hardware-reset-my-camera>

3) Try setting the password from the web UI

-Refer to *desktop setup QSG*

Additional setup

Please note that remote access to your camera via PC is not possible until you set up DDNS and port forwarding in your router.

<https://pyleaudio.helpshift.com/a/pyle-ip/?s=pipecam8-pipecamhd17-pipecamhd22-pipecam24-pipecamhd45-pipecamhd82&f=how-to-configure-ddns---port-forwarding>

Also online – find full instructions to set the following features

-Disabling the LED flashing indicator

-Recording

-Motion Detection

-3rd Party Apps

-Email Alerts

CONTENTS

1. INTRODUCTION	4
1.1 Features	5
1.2 Packing List	5
1.3 Product Views.....	6
1.4 PC System Requirements	7
1.5 Hardware Installation	7
2. INSTALLATION AND SETTINGS	8
2.1 Network Connection	8
2.2 Browser Settings (For IE only)	9
2.3 UPnP Service	10
2.4 IPCam IP Address Search Tool (for IE browser only).....	11
2.5 Install the OCX ActiveX (For IE only)	12
3. SOFTWARE OPERATION	14
3.3 Functions	16
3.4 For Live Video (for IE browser)	17
4. SETTINGS	26
4.1 Status---Device Info.	26
4.2 Setup	26
4.2.2 Multi-Device Settings	27
4.2.3 Date & Time	28
4.2.4 Audio Settings	28
4.3 Network Settings	28
4.3.1 IP.....	28
4.3.2 Wireless Settings	29
4.3.3 Upnp Settings.....	30
4.3.4 DDNS Settings	30
4.3.5 P2P Settings	31
4.3.6 FTP Settings	31
4.3.7 E-mail(SMTP) Settings.....	32
4.4 Video Info.	33
4.5 Alarm Settings.....	34
4.5.1 Motion Detection	34
4.5.2 Alarm Settings	35
4.6 Record.....	36
4.6.2 SD Card info.....	36
4.7 Cruise.....	37
4.7 System	38

4.7.1 Log	38
4.7.2 Auto Maintain	38
4.7.3 System	39
5. PLAYBACK for IE browser only	40
6. FREQUENTLY ASKED QUESTIONS	41
7. SPECIFICATIONS	46
8. OBTAINING TECHNICAL SUPPORT	47

1. INTRODUCTION

This user manual will show the details to set up your camera with your computer; if you are viewing with a Smartphone, pls check Quick Start Guide, as it is very easy to set up.

IMPORTANT NOTICE

The various screens throughout this owner's manual will look different depending on the browser you use. Full functionality is available when using Internet Explorer (IE) with ActiveX (OCX) installed. Limited functionality is available with other browsers, such as Safari, Chrome, and Firefox.

Please Read this manual carefully, according to the browser you are using.

This is an integrated wireless IP Camera. It combines a high quality digital Video Camera with network connectivity and a powerful web server to bring clear pictures to your Desktop from anywhere on your local network or over the Internet.

The main function of the camera is to transmit remote video over IP network. The high quality video image can be transmitted with 30fps speed on the LAN/WAN by using H.264, MJPEG compression technology.

It is based on the TCP/IP standard, build-in WEB server which supports Internet Explorer. Therefore the management and maintenance of your camera becomes simple by using the network to achieve the remote configuration, start-up and to upgrade firmware.

You can use your IP Camera to monitor your home or your office. Also, controlling and managing images are simple by visiting the web site.

1.1 Features

- ☆ Powerful high-speed video protocol processor
- ☆ High-sensitivity 1/4" CMOS sensor
- ☆ Picture total 1000K pixels (1megapixel)
- ☆ Supports Pan and Tilt (PT) control, Pan 320°, Tilt 120°
- ☆ Optimized H.264 MJPEG video compression for transmission
- ☆ Multi-level user management and passwords definition
- ☆ Embedded Web Server for users to visit by IE
- ☆ Supports wireless network (WI-FI/802.11/b/g/n)
- ☆ Supports Dynamic IP (DDNS) and UPNP LAN and Internet (ADSL, Cable Modem)
- ☆ Gives an alarm in case of motion detection
- ☆ Supports image snapshot
- ☆ Supports multiple protocols : TCP/IP HTTP DNS DHCP PPPoE SMTP FTP SSL TFTP NTP ARP/RARP NFS RTSP RTP RTCP.
- ☆ Supports WEP/WPA/WPA2 encryption
- ☆ Supports IE, Firefox, Safari, and Google chrome browsers

1.2 Packing List

- IP Camera
- Wi-Fi Antenna
- Quick Setup Guide
- DC Power Supply
- CD
- Network Cable
- Mounting

1.3 Product Views

1.3.1 Rear View



Wireless Antenna: WI-FI Antenna (rotate to vertical position as shown above).

Infrared LEDs: infrared LEDs with 15 meters night vision.

LENS: Magepixel lens.

Audio Output: The jack is used to connect an external speaker or audio output device.

Audio Input: The jack is used to connect an external microphone or audio input device.

I/O Alarm Pin: 1 Alarm input (GND) 2 Input 3 Output A 4 Output B.

Network Interface: RJ-45/10-100 base T.

Network Light: The green LED will be on when the network is connected, the yellow LED will blink when data is transferred.

Reset: If you press and hold the RESET button for about 10 seconds, all the parameters will be set back to the factory default settings. (Please keep the power on when doing a RESET).

1.4 PC System Requirements

System configuration requirements:

CPU: 2.06 GHZ or above.

Memory: 256M or above.

Network Card: 10M or above.

Display Card: 64M or above memory.

Recommended Operating system: Windows XP, Windows Vista, Windows 7.

1.5 Hardware Installation

Follow the steps below to set up your camera hardware.

1. Install the Wi-Fi antenna.
2. Plug the power adaptor into the camera and into an AC outlet.
3. Plug the network cable into the camera and router/switch.
4. It takes approx 30 seconds to boot up the camera, then you will find the IP address from "IP Camera Tool" (Figure 2.1.5).
5. When the power is on and the network cable is connected, the green LED on the rear panel will stay on.

The yellow LED will keep flashing, and the Indicator LED on the front of the camera will flash.

2. INSTALLATION AND SETTINGS

System Requirement:

Operating System: Windows 2000 / XP / Vista / 7

Network Protocol: TCP/IP

Network Structure: Applies to all network connections 10/100M LAN platform

Browser: Internet Explorer 6.0 or above. Firefox, Google, Safari, or Chrome.

2.1 Network Connection

Intranet and Extranet Connection Reference:

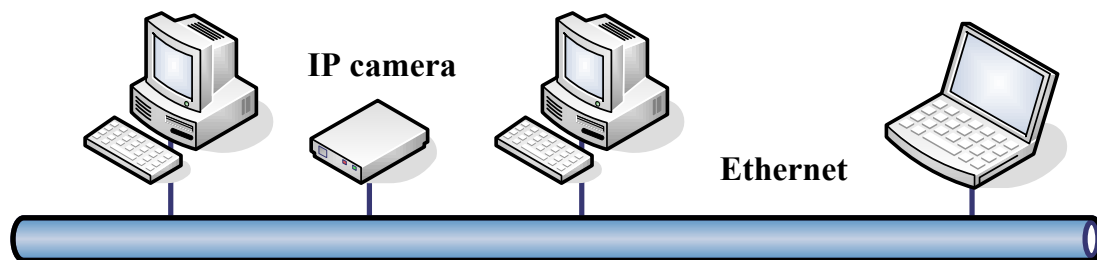
Extranet means public IP (i.e. The Internet), Intranet means private IP. If your IP belongs to the follow range, then it's a private IP :

Category A: 10.0.0.0 - 10.255.255.255

Category B: 172.16.0.0 - 172.31.255.255

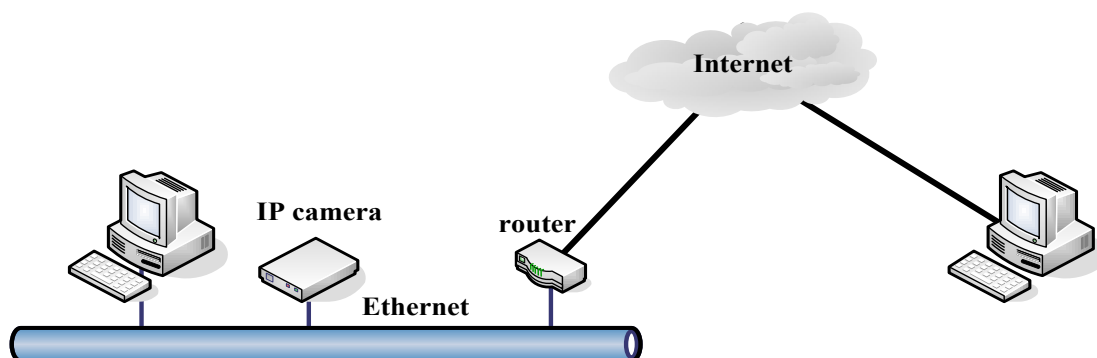
Category C: 192.168.0.0 - 192.168.255.255

Intranet Connection: The IP camera and your computer (device) should be under the same network environment, and both of the IPs should be under the same subnet, pictured as below:

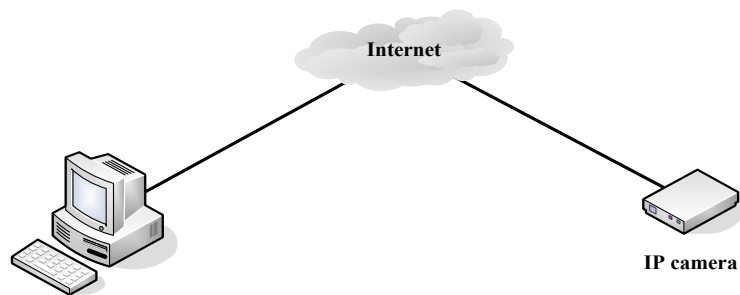


Extranet Connection: there are 2 ways as below:

(1). IP camera connects to the Internet via a router, here camera's IP is a private IP, client needs to connect to the IP camera through a router, with port forwarding to be connected correctly, as below:



(2). IP camera connects to the Internet directly, if it's a fixed IP provided by your ISP, just input it. If it's a floating IP, then input the account and password provided by your ISP to dial-up connection.



2.2 Browser Settings (For IE only)

OCX will be downloaded automatically when you login to the IP Camera, but you might have to set the IE browser to enable the OCX to be downloaded automatically after signing in. Steps as below:

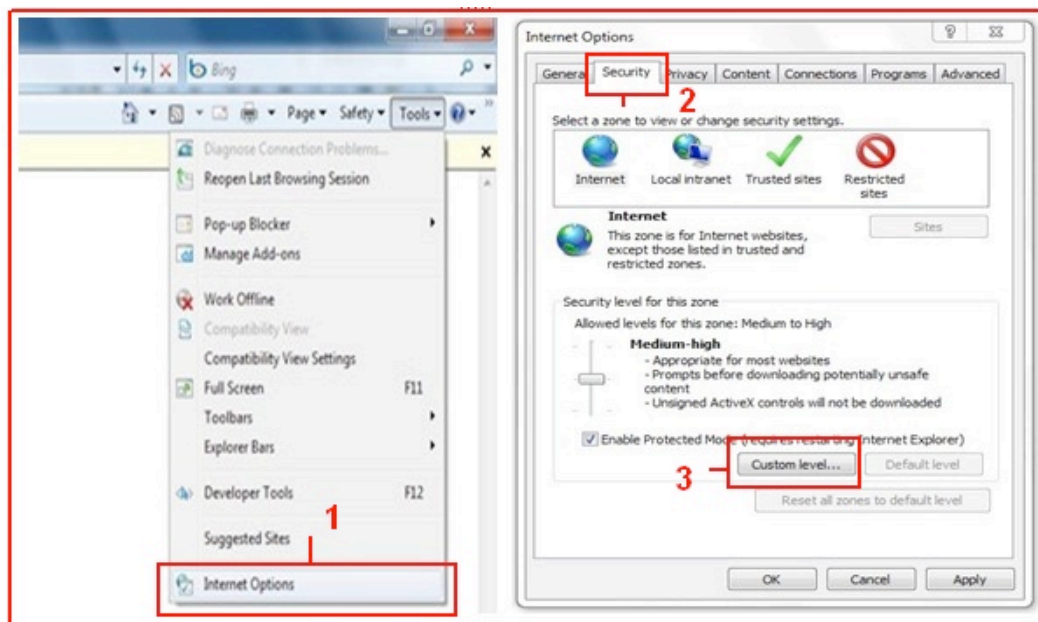
1. Close the firewall of your computer.
2. Change the ActiveX settings, “IE” browser > “Tool” > “Internet Options” > “Security” > “Custom Level” > “ActiveX control and Plug-ins”, all the ActiveX options set to be “Enable”:

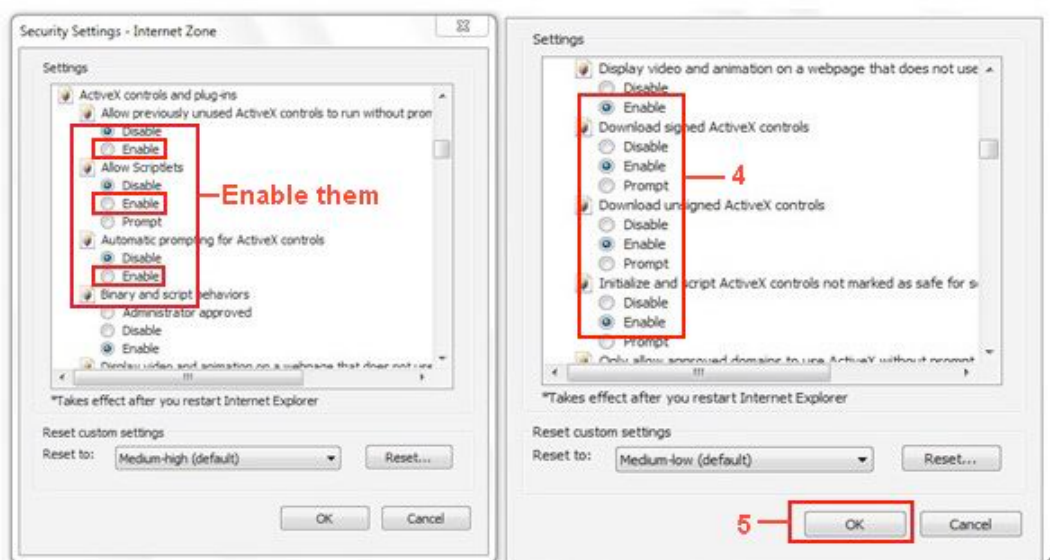
Especially:

Enable: Download unsigned ActiveX controls

Enable: Initialize and script ActiveX controls not marked as safe

Enable: Run ActiveX controls and plug-ins





You can also click **“Start”** menu->**“Internet Explorer”**, and choose **“Internet attributes”**, or via **“Control Panel”** ->**“Internet Explorer”**, to access Security settings.

NOTE: Make sure that your firewall or anti-virus software doesn’t block the software or ActiveX. If you couldn’t see live video, please close your firewall or anti-virus software, and try again.

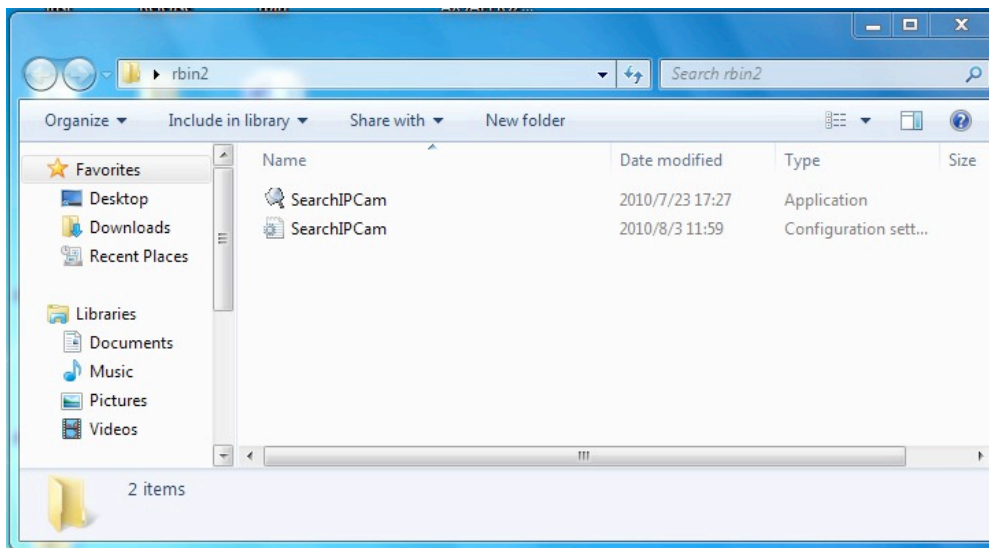
2.3 UPnP Service

UPnP could help you to find your camera’s IP more quickly. For Window XP, from **“Control Panel”** > **“Add or remove applications”** > **“Add or remove Windows component”** > **“Network service”** > **“Detailed data”** > **“UPnP users interface”**, the factory default settings is disabled. Enable it, then it can allow your operating system to support UPnP.

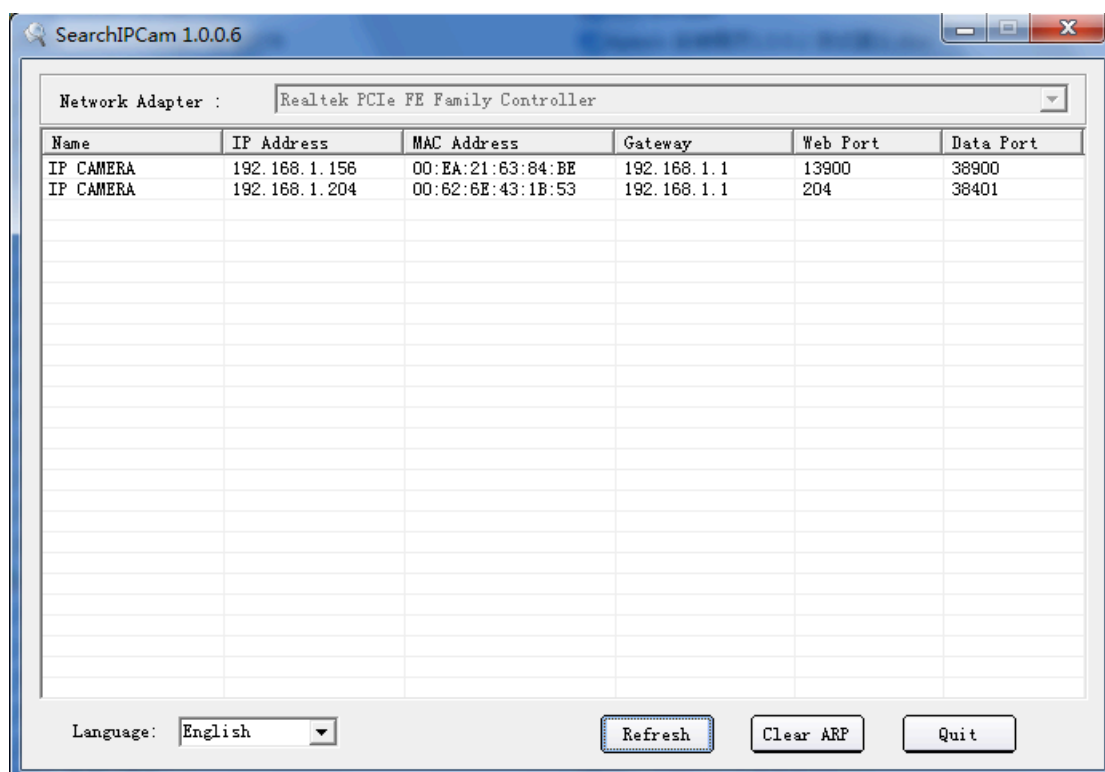
Alternatively, you can also click **“Start”** menu>**“Internet Explorer”**, and choose **“Internet attributes”**, or via **“Control Panel”** >**“Internet Explorer”**, enter to Security settings.

2.4 IPCam IP Address Search Tool (for IE browser only)

Step 1: Use tool “**SearchIPCam.exe**” to find IP address of LAN.



Step 2: Double click “**Search IPCam**” on your desktop, the camera’s IP & MAC address will be displayed. If you want to search again, click “**Search**”.



Step 3: Double-click the IP address of your camera to enter the login interface.(default user: admin; password: pylecam)



2.5 Install the OCX ActiveX (For IE only)

Install the OCX ActiveX for the first time login; You will get tips after enter user and password in login page.

Download the OCX file, then double click to install it automatically.

After OCX installed fully, then input the user and password to login the camera.

2.5.1 For other Browsers, e.g., Safari, Firefox, Chrome, there is no need to install the ActiveX control, see below:

User can input the ip address in the other browsers, select the view mode such as Server Puch; VLC, Quick time to view

If User can not find the correct IP address, The default IP address for each camera is 192.168.1.155. You can run the browser, and input the IP address directly into your browser to login to the camera.

NOTE: If the IP segment of the computer is different from the camera, such as 192.168.0.xx, please change the IP segment of the computer's to the same as camera's, such as 192.168.1.xx, then connect the IP Camera to the computer via network cable directly, run the browser, input the IP address and the login screen below will pop-up:

A login form with a light gray, rounded rectangular background. The form contains four input fields and a button. The first field is labeled 'Username' and has a white text box with a yellow border. The second field is labeled 'Password' and has a white text box. The third field is labeled 'Mode' and has a dropdown menu with 'Server Push' selected. The fourth field is labeled 'Language' and has a dropdown menu with 'English' selected. Below these fields is a 'Login' button with a gray gradient and a shadow. The entire form is set against a gray background with a subtle gradient and a reflection effect.

Username

Password

Mode

Language

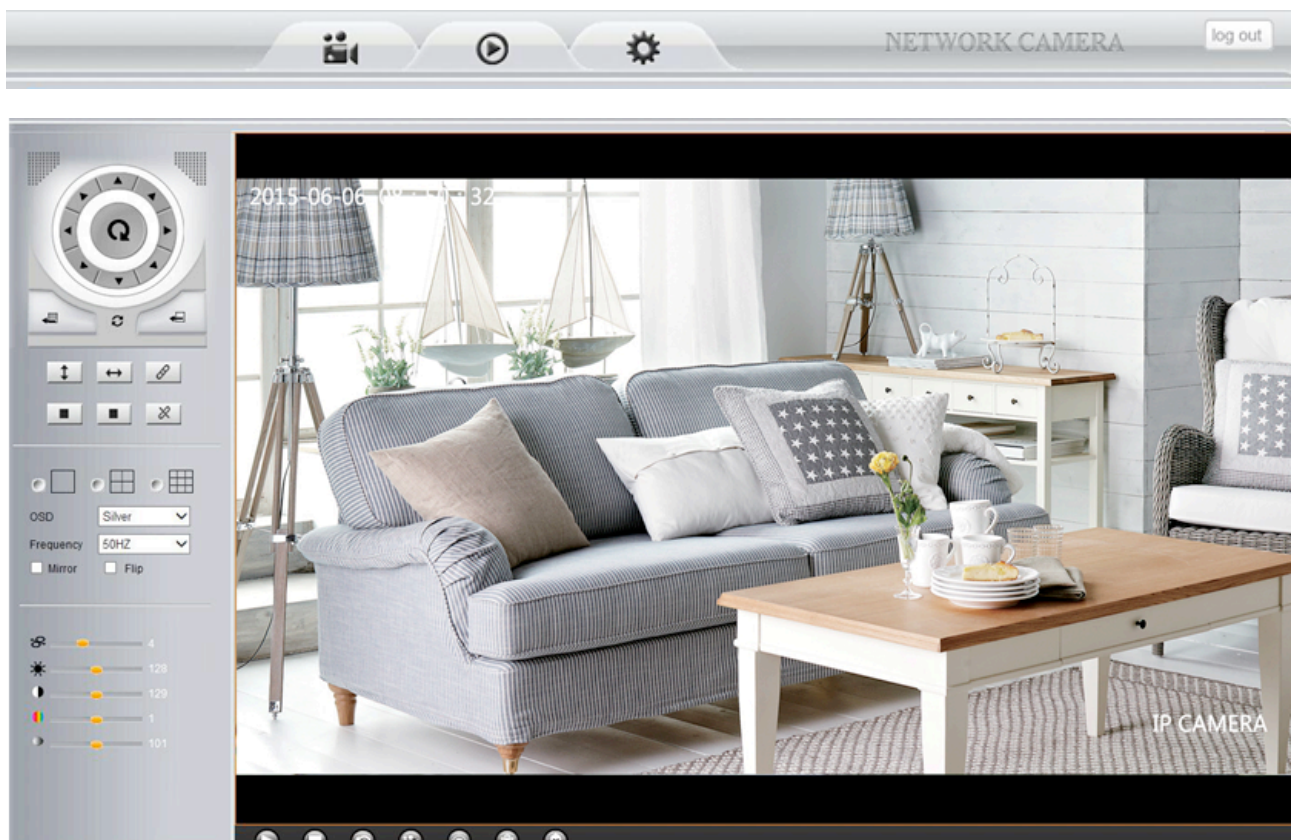
Login

3. SOFTWARE OPERATION

3.1 Software operation for IE Browser

Choose your desired language, input correct user name and password, then click “Login”

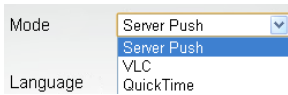
User name: admin **Password:** pylecam,



3.2 Software Operation For Chrome, Firefox, Safari:

Choose the suitable language, input correct user name and password, then click “**Login**”

User name: admin **Password:** pylecam



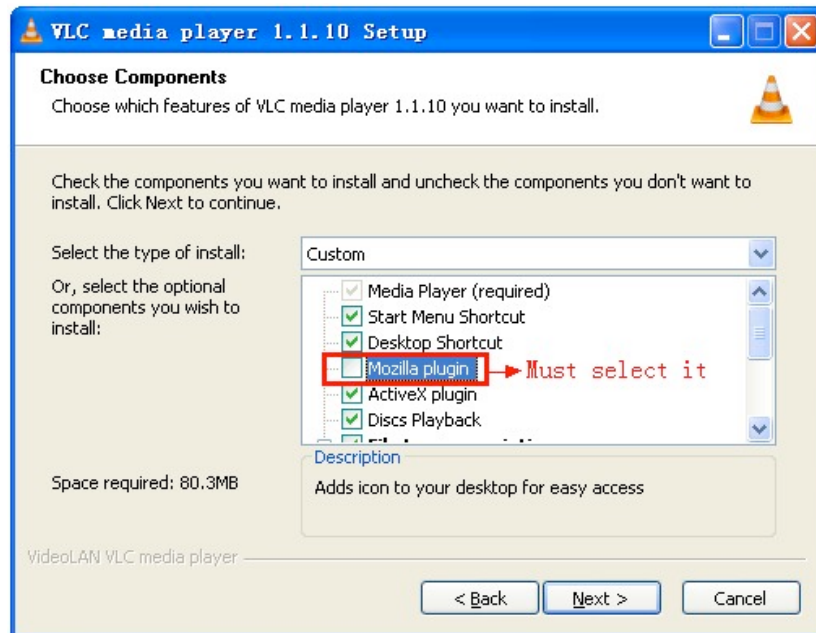
Choose the login mode.

QuickTime: Choose QuickTime, login to the camera directly. if there is prompt for installing the QuickTime player, just download and install it.

Sever Push: For Firefox, Chrome, or Safari browser.

VLC: If you use VLC, should download the VLC player first.

During the VLC installation, you must enable Mozilla plug-in as the picture shows below:



Language English : Choose languages here

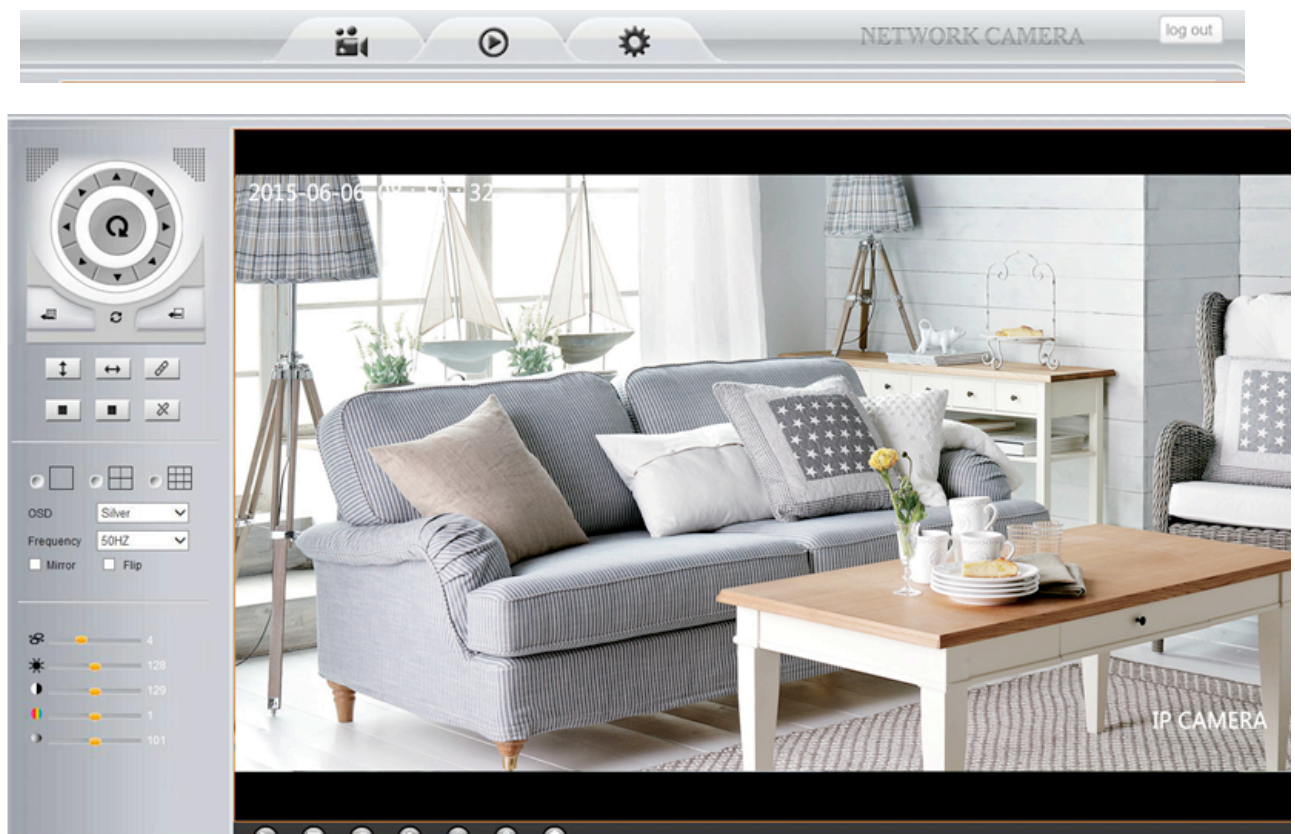


Figure 2.3

3.3 Functions

3.3.1 Three main functions (For IE):



Live video: Click it, back to live video window from “**Playback**” or “**Params settings**”



Playback : Click to query and playback the video files (**Details see 5 Playback**)



Params Settings : Setting the camera’s parameters (**Details see 4 Params settings**)

Log out: you will back to the login page

3.3.2 Two main functions (For Safari, Chrome, Firefox)



Live video: Click it, back to live video window from “**Playback**” or “**Params settings**”



Params Settings : Setting the camera’s parameters (**Details see 4 Params settings**)

Log out: you will back to the login page

3.4 For Live Video (for IE browser)

3.4.1 Video Menu:



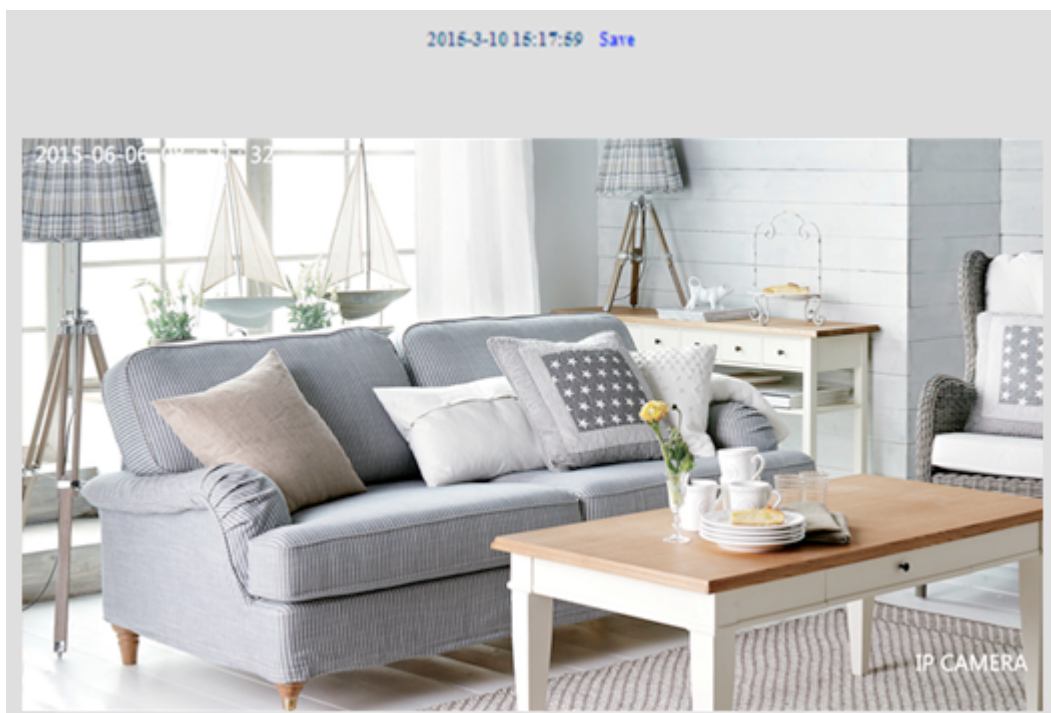
Play: Play the live video.



Stop: Stop the live video.



Snapshot: Click to take snapshot, the picture be saved in the PC to its appointed path as JPG format, and pop-up the prompt as below:(you can click “Save” to save the snapshot)



Record: Click to start record manually, the icon will change to green color.



Record file will be saved in the PC to its appointed path as AVI format. Click it again, will stop record function.



Audio: Click it to enable listen function, the icon will change to green color



can hear the live audio from camera via PC if audio is ON. Click it again, will stop listen function.



Talk: Click it to enable talk function, the icon will change to green color



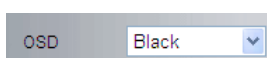
can talk between PC and camera if audio device connected. Click it again, will stop talk function.



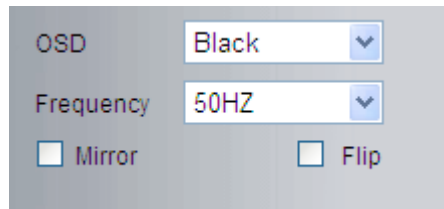
Clear Alarm: Click to stop the alarm manually when there is an alarm triggered, and pop-up prompt as below:



Fullscreen: Click to get fullscreen view;

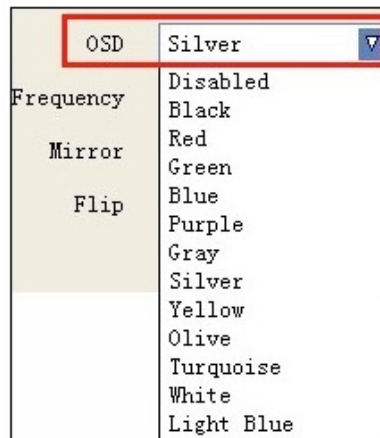


OSD Settings: Click it will pop-up the OSD settings interface, including OSD Color, Frequency, Image Mirror and Flip.



OSD: Means “On-Screen Display”

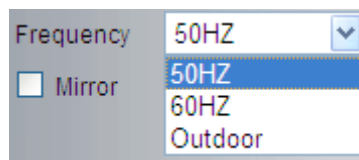
OSD Color: Including Disabled, Black, Red, Green, Blue, Purple, Gray, Silver, Yellow, Olive, Turquoise, White, Light Blue etc.



Frequency: Including 50HZ, 60HZ, Outdoor.

50HZ/60HZ for the users who use 50HZ/60HZ frequency, outdoor for the users who want to use this camera to monitor an outdoor environment (through a window).

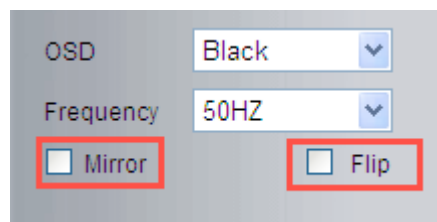
NOTE: The camera should only be used in a indoor environment



Mirror and Flip

Mirror: Select this checkbox to see a mirror image. Uncheck it to go back to normal.

Flip: Select this checkbox to flip the image upside down. Uncheck it to go back to normal.



NOTE: You can choose Mirror and Flip function if you set up the camera in a special position, upside down for example.

3.5 Live Video for Safari, Chrome, Firefox:

3.5.1 Play Menu For QuickTime Mode:



Capture: Click to take snapshot, the picture be saved in the PC to its appointed path as JPG format, will pop-up the snapshot, right click the picture to save it.



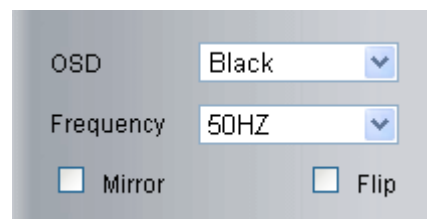
Fullscreen: Click to have fullscreen view;



: Click to exit fullscreen.

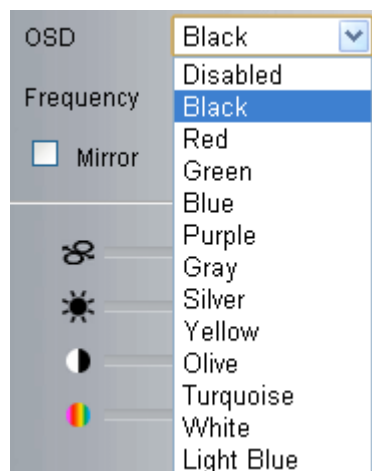


OSD Settings: Click it will pop-up the OSD settings interface, including OSD Color, Frequency, Image Mirror and Flip.



OSD: Means “On-Screen Display”

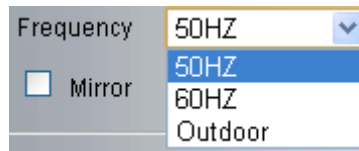
OSD Color: Including Disabled, Black, Red, Green, Blue, Purple, Gray, Silver, Yellow, Olive, Turquoise, White, Light Blue etc.



Frequency: Including 50HZ, 60HZ, Outdoor.

50HZ/60HZ for the users who use 50HZ/60HZ frequency, outdoor for the users who want to use this camera to monitor an outdoor environment (through a window).

NOTE: The camera should only be used in an indoor environment.



Mirror and Flip

Mirror: Select this checkbox to see a mirror image. Uncheck it to go back to normal.

Flip: Select this checkbox to flip the image upside down. Uncheck it to go back to normal.



NOTE: You can choose Mirror and Flip function if you set up the camera in a special position, upside down for example.

3.5.2 Top Menu For VLC Mode:

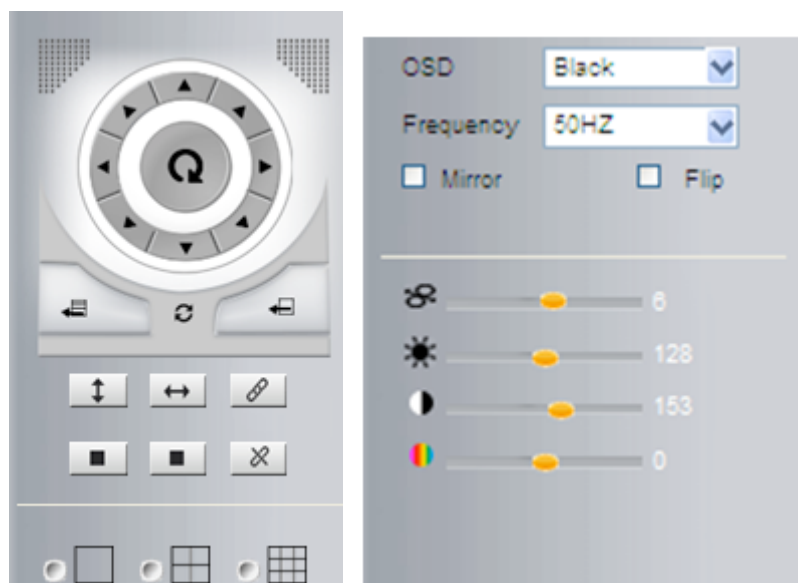


This will be the same as 3.3.1 TOP Menu For QuickTime Mode.

3.6 Left Side Menu:

3.6.1 Left Side Menu For IE browser

There are some basic operation icons listed on the left side menu as below:



PT Control: Set Pan/Tilt as upward, downward, leftward, rightward, up-left, down-left, up-right, down-right,

etc directions.



Center: Click this icon, the camera will pan/tilt, then stop at the center. Normally it will rotate 1 rotation.

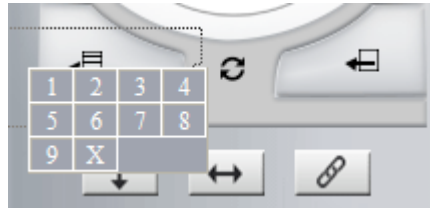


Up: Click this icon, camera will move up, you can click one by one or hold it to control the movement.




Down: Click this icon, camera will move down, click it step by step or hold on to control the movement

NOTE: It is the same operation as left, right, up-left, up-right, down-left, down-right etc.




Set Preset: It supports 9 preset positions. First, control the camera to rotate to the special position you

need to set, click **Set Preset** button  it will pop-up a dialog frame (Figure 4.0), choose any number (1-9).



Call Preset: It supports 9 preset positions. If you want to monitor an important area quickly and

precisely, just click **Call Preset Position** button  it will pop-up a dialog frame (Figure 4.0), choose the number, then the camera will rotate to the preset position automatically.


If you want to use **Call Preset**, you have to **Set Preset** first.

NOTE: if you set different positions with a same number, the camera will record the last position setting only.




Cruise: Preset cruise, camera can cruise according to the different presets you set.




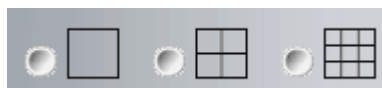
Click this icon, the camera will rotate up and down, i.e., vertical tilt, click  to stop it



Click this icon, the camera will rotate left and right, i.e., horizontal pan, click  to stop it



Click this icon, IO output Switch ON. Click  to set it OFF.



Click this one, you can view the main channel of the camera you login to, move the mouse to the

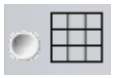
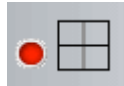
icon, the frame will change to red color





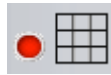
Click this one; you can view 4 Channels of cameras that are connected, from CH1 to CH4. Move

the mouse to the icon, the frame will change to red color

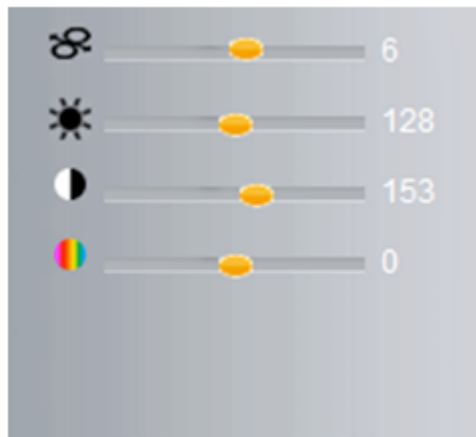


Click this one; you can view 9 Channels of cameras that are connected, from CH1 to CH9. Move

the mouse to the icon, the frame will change to red color



NOTE: If you want to view 4/9 channels, you should set the Multi-Device firstly (See section 4.13 Multi-Device Settings).



PTZ speed: set value from 1 to 100, click the icon, it will change back to the factory settings.



Brightness: set value from 0 to 255, click the icon, it will change back to the factory settings.



Contrast: set value from 0 to 255, click the icon, it will change back to the factory settings.



Hue: set value from -128 to 127, click the icon, it will change back to the factory settings.

3.4.2 Left Side Menu for Safari, Chrome, Firefox:

There are some basic operation icons listed on the left side menu as below:

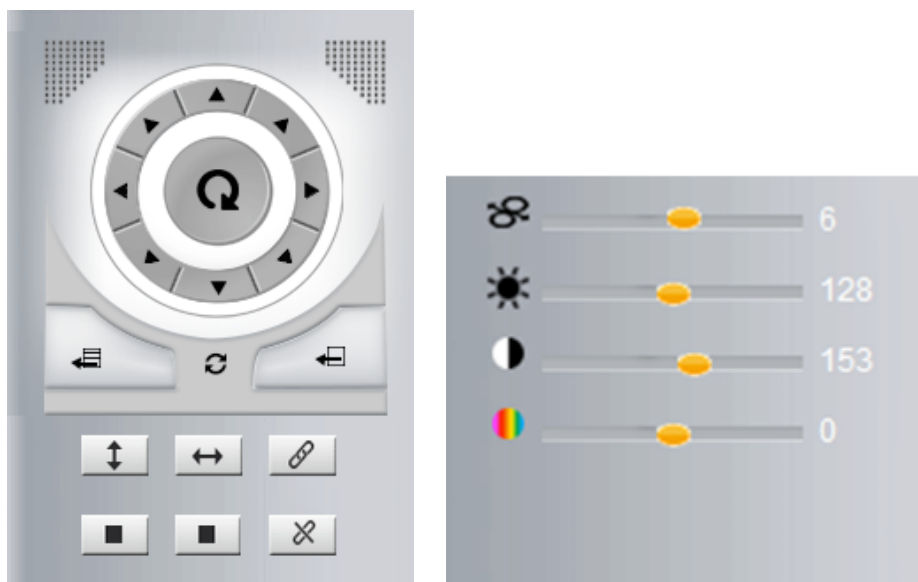
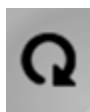


Figure 4.4

PT Control: Set Pan/Tilt as upward, downward, leftward, rightward, up-left, down-left, up-right, down-right, etc.



Center: Click this icon, the camera will pan/tilt, then stop at the center. Normally it will rotate 1 rotation.



Up: Click this icon, camera will move up, you can click step by step or hold it to control the movement.




Down: Click this icon, camera will move down, click it step by step or hold on to control the movement.

NOTE: It is the same operation as left, right, up-left, up-right, down-left, down-right etc.




Figure 4.5



Set Preset: It supports 9 preset positions. First, control the camera to rotate to the special position you need to set, click **Set Preset** button  it will pop-up a dialog frame (Figure 4.5), choose any number (1-9).



Call Preset: It supports 9 preset positions. If you want to monitor an important area quickly and precisely, just click **Call Preset Position** button  it will pop-up a dialog frame (Figure 4.5), choose the number, then camera will rotate to the preset position automatically.


If you want to use **Call Preset**, you have to **Set Preset** first.

NOTE: If you set different positions with a same number, camera will record the last position setting only.




Cruise: Preset cruise, camera can cruise according to the different presets you set.

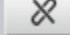


Click this icon, the camera will rotate up and down, i.e., vertical tilt, click  to stop it.



Click this icon, the camera will rotate left and right, i.e., horizontal pan, click  to stop it.



Click this icon, IO output Switch ON. Click  to set it OFF.

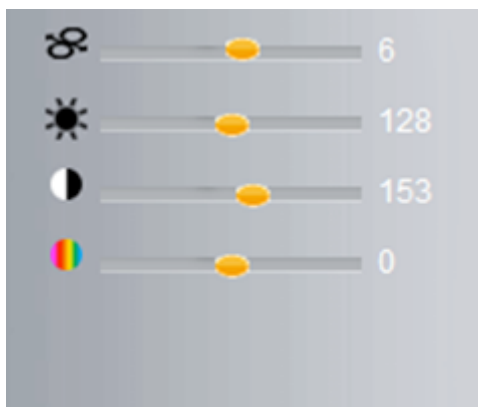


Figure 4.6



PTZ speed: set value from 1 to 100, click the icon to go back to the factory settings.



Brightness: set value from 0 to 255, click the icon to go back to the factory settings.



Contrast: set value from 0 to 255, click the icon to go back to the factory settings.



Hue: set value from -128 to 127, click the icon to go back to the factory settings.

4. SETTINGS

4.1 Status----Device Info.



Click “ **Settings**” icon select “Status”, it will show the basic information such as “**Device ID**”, “**Device Client Version**”, “**Device System Version**”, “**Description**”, “**IP Address**”, “**UPNP Status**”, “**DDNS Status**” etc.

Default device name is “**IP Camera**”, users can change the camera’s description here, picture as below:

4.1.2 For IE, camera will show as below:

Device Info	
Device ID	54CDEE0123AC
Device Client Version	71.1.1.1
Device System Version	80.3.4.0005
Description	IP CAMERA
IP Address	192.168.4.142
UPNP Status	Fail
DDNS Status	Succ http://8206.apexispc.com:80

Figure 4.7

4.1.3 For Safari, Chrome, Firefox, camera will show like picture as below:

Device Info	
Device ID	54CDEE0123AC
Device Client Version	71.1.1.1
Device System Version	80.3.4.0005
Description	IP CAMERA
IP Address	192.168.4.142
UPNP Status	Fail
DDNS Status	Succ http://8206.apexispc.com:80

Figure 4.8

4.2 Setup

4.2.1 User Permission

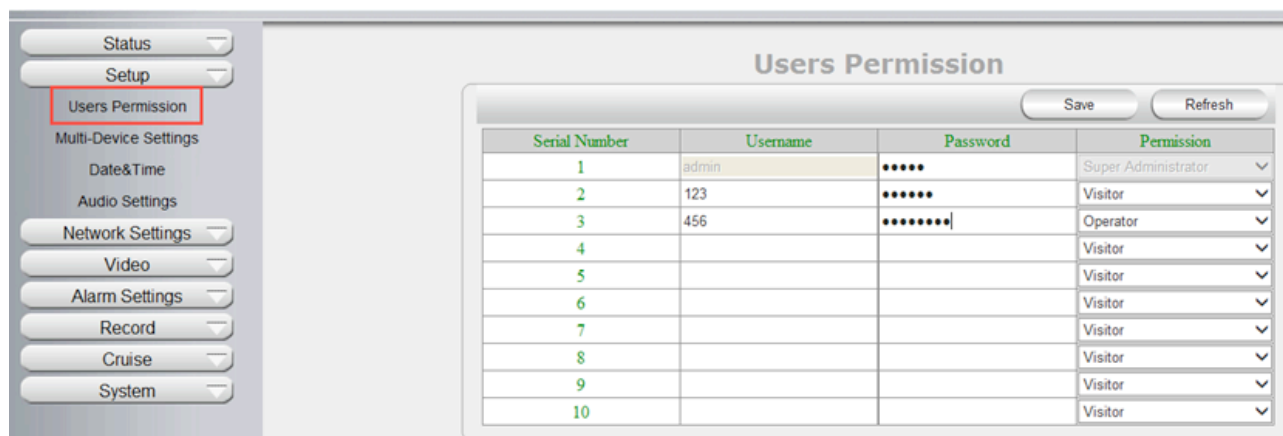
User can set 10 different usernames and passwords for different permission; Permission: Administrator, Operator; Visitor;

Super Administrator : Every device has a super administrator, it has the highest permission, can set all the parameters.

Administrator : Lower permission than super administrator, it can set most of the parameters except adding or editing other administrator accounts.

Operator: Lower permission than administrator, can do some operation such as pan/tilt control and set some parameters.

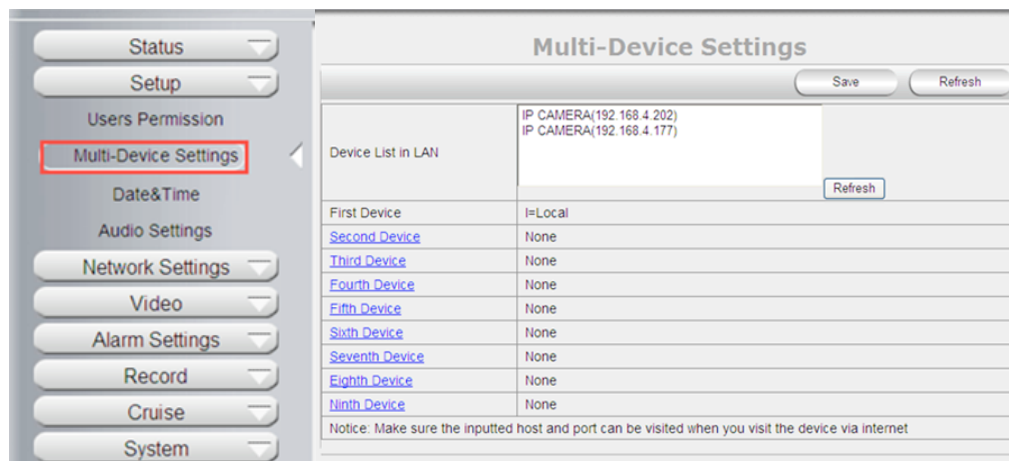
Visitor: The lowest permission, only can view live video, can't control the pan/tilt, parameter settings etc.



4.2.2 Multi-Device Settings

Note: Multi-Device only can be set under IE Browser, for Firefox, Safari, Chrome, you cannot see these setting, as they do not support ActiveX.

Click “**Multi-Device Settings**” to enter the interface:



If you have more cameras in same LAN network, software can auto-detect them and list in “Device List in LAN”

Enable the channel you want to add; Choose the IP, input host(for camera in different network, you will need to input external ip address/DDNS address), web port, media port, username, and password manually, click Add to submit.

4.2.3 Date & Time

Date Time: Display the current date and time

Time Zone: Set the current time zone Select the working time server.

Time Mode: Can choose PC Time or NTP Time.

PC Timing: Camera will set the time the same as your PC.

NTP Server: User will need to select a working time server, and select the time zone.

The screenshot shows a web interface for 'Date&Time' settings. On the left is a sidebar menu with options: Status, Setup, Users Permission, Multi-Device Settings, Date&Time (highlighted with a red box), Audio Settings, Network Settings, and Video. The main content area is titled 'Date&Time' and contains a table with the following settings:

Datetime	2015-03-10 17:14:57
Time Zone Settings	GMT+8
Timing Mode	PC Timing

At the top right of the main area are 'Save' and 'Refresh' buttons.

4.2.4 Audio Settings

External Headset: User need to enable this feature, and connect external audio device like speak, Mic. So that this feature work.

Built-in Headset: This means the built-in Headset port; with located in the cable. User can connect to the audio devices;

Microphone Volume: User can adjust the volume of Microphone.

Speaker Volume: User can adjust the volume of Speaker.

The screenshot shows a web interface for 'Audio Settings'. On the left is a sidebar menu with options: Status, Setup, Users Permission, Multi-Device Settings, Date&Time, Audio Settings (highlighted with a red box), Network Settings, Video, and Alarm Settings. The main content area is titled 'Audio Settings' and contains a table with the following settings:

External Headset	<input type="checkbox"/>
Built-in Headset	<input checked="" type="checkbox"/>
Microphone Volume	5
Speaker Volume	10

At the top right of the main area are 'Save' and 'Refresh' buttons.

4.3 Network Settings

4.3.1 IP

Network Type: User can set Dynamic Address to obtain IP directly from router, or set a Static IP manually.

Media Port: User can set the Media port to transfer video if need to view camera remotely.(Work with DDNS or external IP)

Web Port: User can set the web port to transfer video if need to view camera remotely.(Work with DDNS or external IP)

Onvif: User can set Onvif port to work with other Onvif device like NVR..etc;

RTSP Port: Default 554;

DNS server: User can change DNS IP settings.

Network Settings	
Network Type	Dynamic Address
Media Port	38401
Web Port	80
ONVIF Port	36000
RTSP Port	554
DNS Server	192.168.10.1
MAC Address	0a:1b:22:33:4e:5f

4.3.2 Wireless Settings

Click the icon “**Search**” to scan the wireless network in this environment automatically.

Using Wireless Lan: Set Wi-Fi ON/OFF.

SSID: the ID of Wireless network, it should be the same SSID as the connected Wi-Fi router.

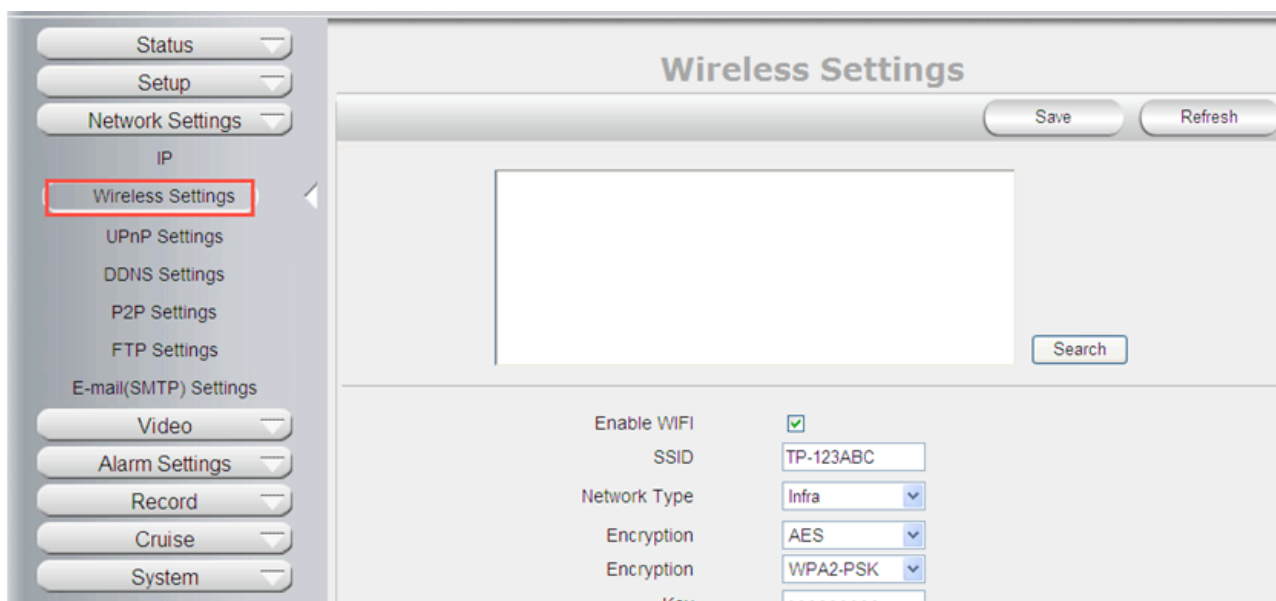
Network Type: Two modes:

1. **Infra** (Infrastructure Mode), if using normal AP, choose **Infra** mode.
2. **Ad-Hoc** Mode. If using point-to-point transmission, choose **Ad-Hoc** mode.

The factory setting is **Infra**.

- **Encryption:** WEP, TKIP, AES optional.
- **Authentication:** **WEP:** Open System or Share Key. **TKIP (AES):** WPA-PSK or WPA2-PSK.
- **Select Key:** Choose the channel of WEP share Key.
- **Key:** Input the key the same as the settings in your router.

All the Wi-Fi encryption mode settings should be the same as your Wi-Fi router, and different encryption has different authentication menu.



4.3.3 Upnp Settings

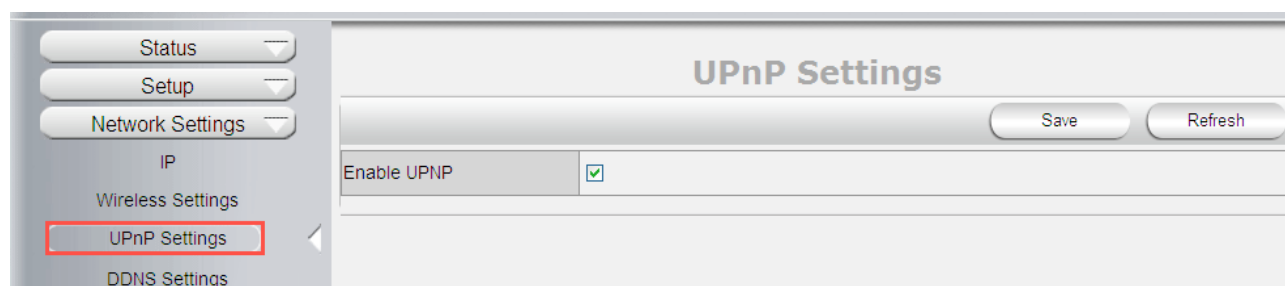
Enable UPNP: Set UPNP function ON/OFF.

Select it to enable UPNP, then the camera will do port forwarding automatically.

It's helpful for using DDNS, if your router support UPNP, then you no need do port forwarding in router.

NOTE: Here UPNP only for port forwarding now. It has much relation with security settings of your router, make sure the UPnP function of router is ON.

ATTENTION: If your router doesn't support UPNP function, it may show error information. So we recommend you do port forwarding manually in your router.



4.3.4 DDNS Settings

There are 2 options:

Factory DDNS: This domain is provided by the manufacturer.

Third Party DDNS: This domain is provided by a 3rd party, such as DynDNS, 3322 etc.

- **Enable DDNS:** Set DDNS function ON/OFF.
- **DDNS Server Type:** Set DDNS server type, such as factory DDNS or third party DDNS server provider.
- **DDNS User:** Registered user name from DDNS server. (If you use factory DDNS, it can't be modified.)
- **DDNS Password:** Registered password from DDNS server. (If you use factory DDNS, it can't be modified.)
- **DDNS Host Name:** Domain name set by user. (If you use factory DDNS, it can't be modified.)

For the third party DDNS, you have to register an account first, keep the user, password, host, then input it.

NOTE: Only one DDNS can be chosen, for example, if you use manufacturer's DDNS, the 3rd one won't work, if you use a 3rd DDNS, the manufacturer's one won't work.

4.3.5 P2P Settings

User can see and change P2P GUID here

Factory will provide a factory P2P GUID for free using. Default user: admin; password: pylecam; User can change the password here or change a new P2P GUID here.

4.3.6 FTP Settings

Set FTP service, Snapshots will be delivered to appointed FTP server when alarmed.

Enable FTP: Set FTP function ON/OFF.

FTP Server: Set FTP server address.

FTP Port: Set the port of FTP server, default is 21.

FTP User: Set the user name of FTP server.

FTP Password: Set the password of FTP server.

Upload Folder: Set the path of remote FTP server. Make sure that the folder you plan to store images exists. (The camera cannot create the folder itself). Also, the folder must be erasable.

FTP Mode: It supports standard (POST) mode and passive (PASV) mode.

Click save to submit, click test to check the settings.

NOTE: When alarmed, there will be 3 snapshots sent to the FTP server every 1 second

FTP Settings	
Enable FTP	<input checked="" type="checkbox"/>
FTP Server	192.168.10.106
FTP Port	21
FTP User	yjc
FTP Password	...
Upload Folder	
FTP Mode	PORT
Upload Image Now	<input type="checkbox"/>

Pls save first then test

4.3.7 E-mail(SMTP) Settings

Enable Email: Set e-mail function ON/OFF.

Sender: Set sender's name or email address

Sender's email: Set sender's email address.

Receiver: Set receiver's email box. (Supports 3 receivers' emails simultaneously)

SMTP Server: The sender address SMTP server.

SMTP Port: The sender's SMTP Port, usually is 25, some SMTP servers have their own port, e.g., the smtp port for Gmail is 465.

Auth User: Verify the user settings.

SMTP Username: Set sender's user name or email address.

SMTP password: Set sender's email address password.

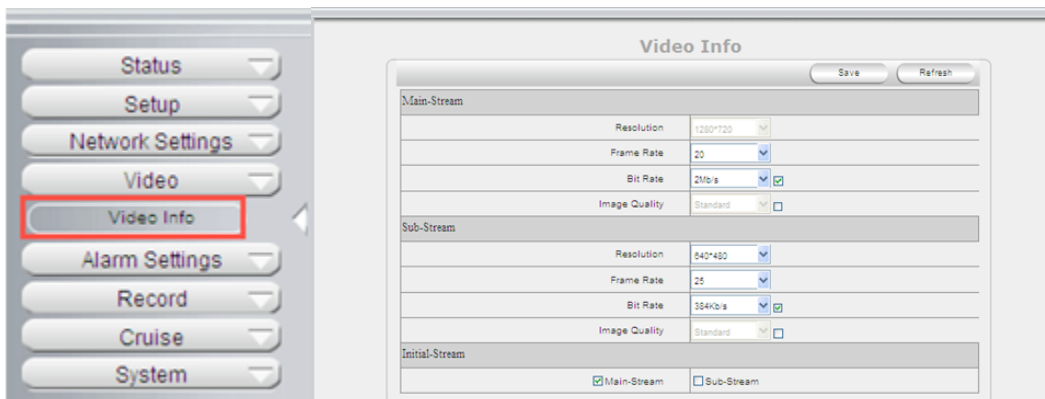
Note: User can save the settings first, then click Test button to see if settings working. If not, pls double check your settings or spelling.

E-mail(SMTP) Settings	
Enable E-mail	<input checked="" type="checkbox"/>
Sender	2879745181@qq.com
Sender Email	2879745181@qq.com
Receiver1	2879745181@qq.com
Receiver2	yjc824944817@163.com
Receiver3	
SMTP Server	smtp.qq.com <input type="checkbox"/> SSL Login
SMTP Port	25
Auth User	<input checked="" type="checkbox"/>
SMTP Username	2879745181@qq.com
SMTP Password

Pls save first then test

4.4 Video Info.

Click “Video Info” to enter the interface as below:



There are two options for stream, **Main-Stream** and **Sub-Stream**, you can set the stream based on the actual operation environment, for example, if the bandwidth is good enough, set Main-Stream as Initial-Stream, or choose Sub-Stream if better.

Set the parameters of **Main-Stream** and **Sub-Stream** as below:

Resolution: 1280 x 720, 640 x 368, 320 x 208 optional.

Frame Rate: Set the frame rate according to the bandwidth. Frame rate could be “Auto” or “from 1 fps to 30 fps (Real time)”. If the network situation is not ideal, you can reduce the frame rate to control the coding rate, make the moving pictures smoother.

Bit Rate: Higher bite rate means better quality images, but takes more bandwidth, so adjust the settings according to the actual bandwidth available. The range of bit rate from 128 Kbps ~ 4 Mbps.

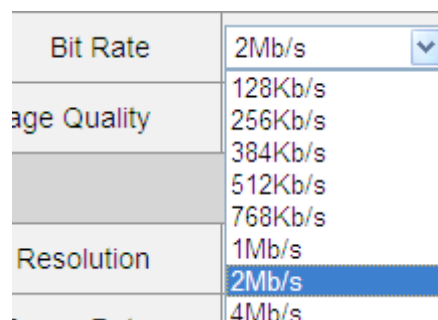
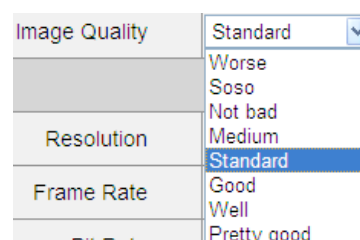


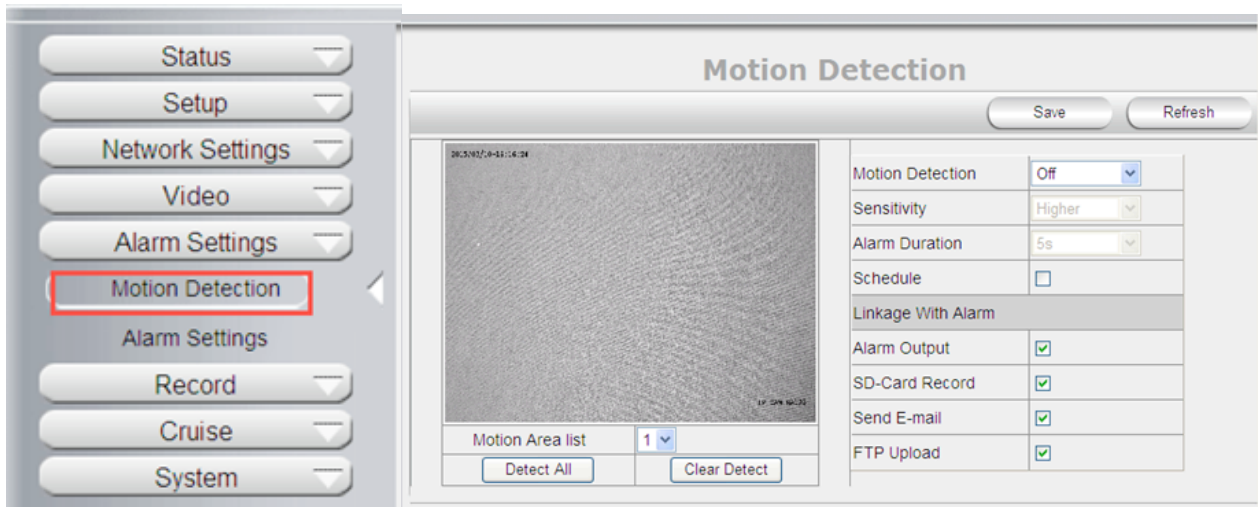
Image Quality: Better image quality, higher bit rate value, but it will take more bandwidth, the image quality parameters could be set as below:



NOTE: When the device runs, only can select Bit Rate or Image Quality either.

4.5 Alarm Settings

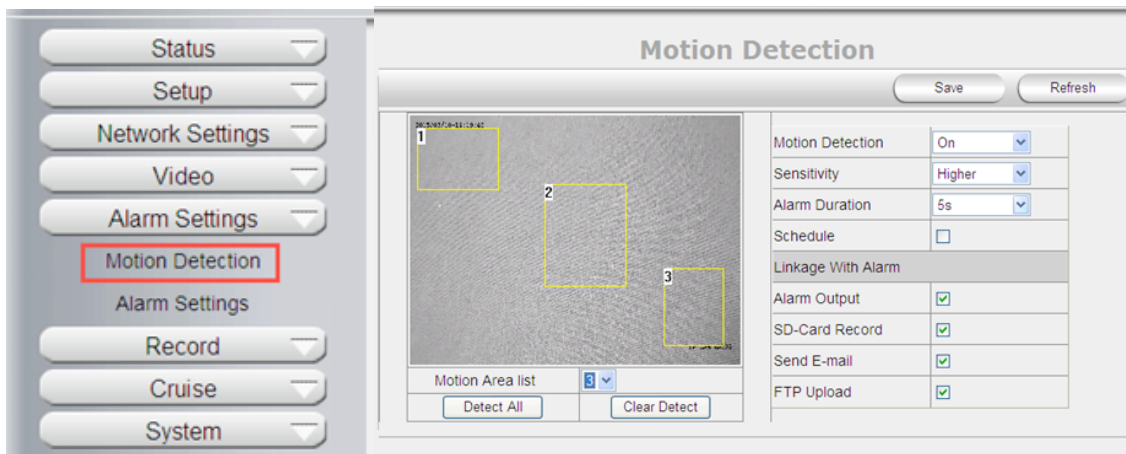
4.5.1 Motion Detection



Motion Detection Zone Armed:

Can set all zones to be armed, or a specified zone armed.

Before setting a specified zone, you should set "**Motion Detection**" to "**ON**", then press left mouse, drag the mouse onto video area to set the detection zone, and save it, supports 3 areas.



- **Detect All:** Setting the whole video window as the motion detect armed zone.
- **Clear Detect:** Clear all armed zone.
- **Motion Detection:** Set motion detection armed function ON/OFF.
- **Sensitivity:** Set detection sensitivity as Low, Middle, High, Higher, Highest.
- **Alarm Duration:** Set each alarm duration, can be forever, 5s, 10s, 15s, 30s, 60s.

Action with Alarm

These are linkage actions optional for motion detection. User can select the alarm relative alarm convenience to them.

Alarm output: Select it to enable alarm output, unselect to stop.

SD-Card Record: Select it to enable record to SD card, unselect to stop.

Send E-mail: Select it to enable E-mail alert function, unselect to stop.

FTP Upload: Select it to enable FTP upload function, unselect to stop. .

Click **Save** to save all the settings.

Click **Update** to refresh the settings.

Linkage With Alarm	
Alarm Output	<input checked="" type="checkbox"/>
SD-Card Record	<input checked="" type="checkbox"/>
Send E-mail	<input checked="" type="checkbox"/>
FTP Upload	<input checked="" type="checkbox"/>

4.5.2 Alarm Settings

External Alarm: Set external alarm function ON/OFF.

- **Alarm Duration:** Set external alarm output duration (Relay close time), can be Forever, 5s, 10s, 15s, 30s, 60s.

- **Lose SD-Card Alarm:** Set alarm triggered ON/OFF if the SD-Card is lost.

- **Alarm Input:** Set alarm input ON/OFF, it supports NO/NC external alarm device, choose the correct mode to make sure it works well, it refers to the I/O pin6 (Input2) and pin7 (Input1).

Alarm Settings	
External Alarm	Off
Alarm Duration	10s
Lose SD-Card Alarm	Off
Alarm Input	<input checked="" type="checkbox"/> Enable Mode N.O
Linkage With Alarm	<input type="checkbox"/> Alarm Output <input type="checkbox"/> SD-Card Record <input type="checkbox"/> Send E-mail <input type="checkbox"/> FTP Upload
Schedule	<input type="checkbox"/>

Alarm output: Select it to enable alarm output, unselect to stop.

SD-Card Record: Select it to enable record to SD card, unselect to stop.

Send E-mail: Select it to enable E-mail alert function, unselect to stop.

FTP Upload: Select it to enable FTP upload function, unselect to stop. .

Click **Save** to save all the settings.

Click **Update** to refresh the settings.

Linkage With Alarm	
Alarm Output	<input checked="" type="checkbox"/>
SD-Card Record	<input checked="" type="checkbox"/>
Send E-mail	<input checked="" type="checkbox"/>
FTP Upload	<input checked="" type="checkbox"/>

4.6 Record

4.6.1 Local Settings

Note: This feature will suitable for IE only, as other browsers not support IE activeX.

Enable Alarm Record: Camera will record to the path user set when Alarm happens.

Alarm Record time: User can set the record time when Alarm happens. Such as 2 mins.

Manual Record Pack time: User can set the manual record time, such as 2 hours. Once click the “Record” button under the live video screen, camera will record as long as user set.

Path: This belongs to the PC path, user can set the PC path to store all records.

Local Settings	
Enable Alarm Record	<input checked="" type="checkbox"/>
Alarm Record Time	2 Minute
Manual Record Pack Time	1 Hour
Record Path	E:\ <input type="button" value="Browse"/>

4.6.2 SD Card info

Device Name: Display the name of SD card.

Total Size: Display the total size of SD card

Balance Space: Display the free space of SD card

Status: Display the state of SD card.

Format: Click it to delete all data and format the SD card. (All data will be lost if formatted).

Open Auto cover: Set SD card auto cover when it's full.

Open Pre-recording: Set Pre-recording function (Record the video before alarm triggered).

Pre-recording Time: Set the Pre-recording time, can be from 1 to 6 seconds.

Record Stream: Choose the stream here:Main Stream and Sub Stream.

SD Card Info	
<div>Save Refresh</div>	
Device Name	<input type="text"/>
Total Size	<input type="text" value="0"/> KB
Balance Space	<input type="text" value="0"/> KB
Status	<input type="text" value="Pullout"/>
<div>Format</div>	
Enable Auto-Cover	<input type="checkbox"/>
Enable Pre-Record	<input type="checkbox"/>
Alarm capture to SD card	<input type="checkbox"/>
Pre-Record Time	<input type="text" value="3"/> Second
Record stream	<input type="text" value="Sub-Stream"/>

4.7 Cruise

Cruise works support 9 directions; User can set the locations, then camera can keep cruising under the directions.

Cruise Name: User can set the a Name for the crusing Plan.

Status: Enable it, User can start settings.

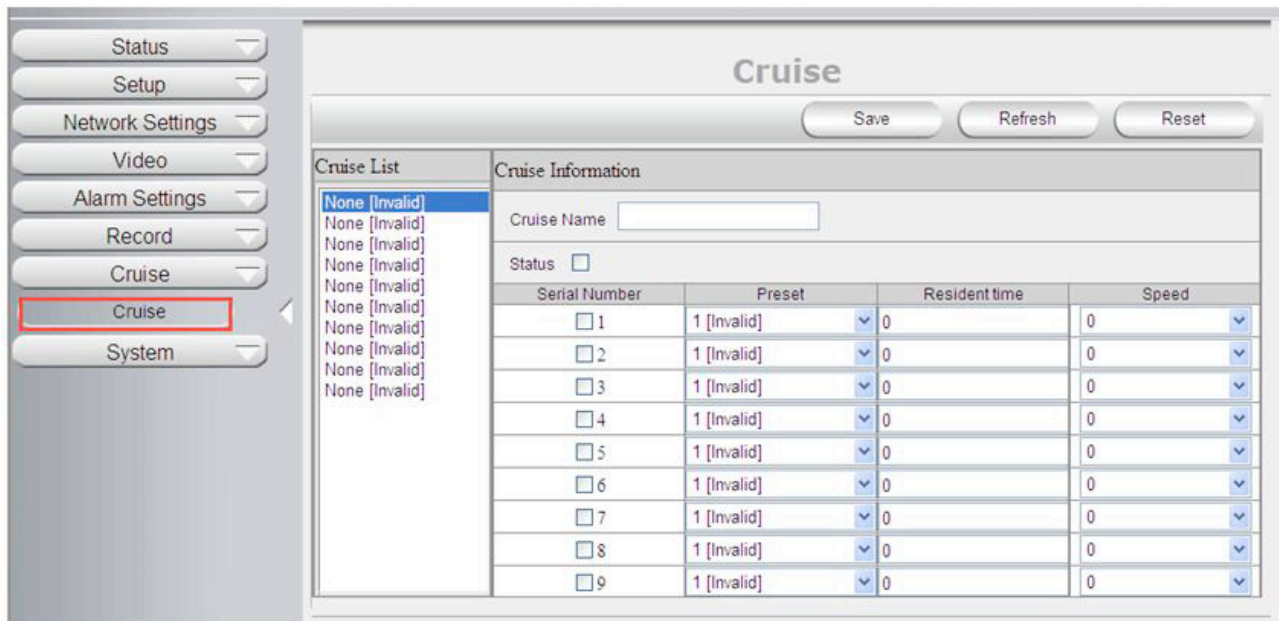
Serial Number: User can set the locations or path for cruise.

Preset: Camera will follow from 1 to 9; User can set different location with different Number.

Resident Time: Camera stay time: Such as, Preset 1; Resident time: 3 seconds; Then when camera in preset 1 location, will stay for 3 seconds.

Speed: camera moving speed.

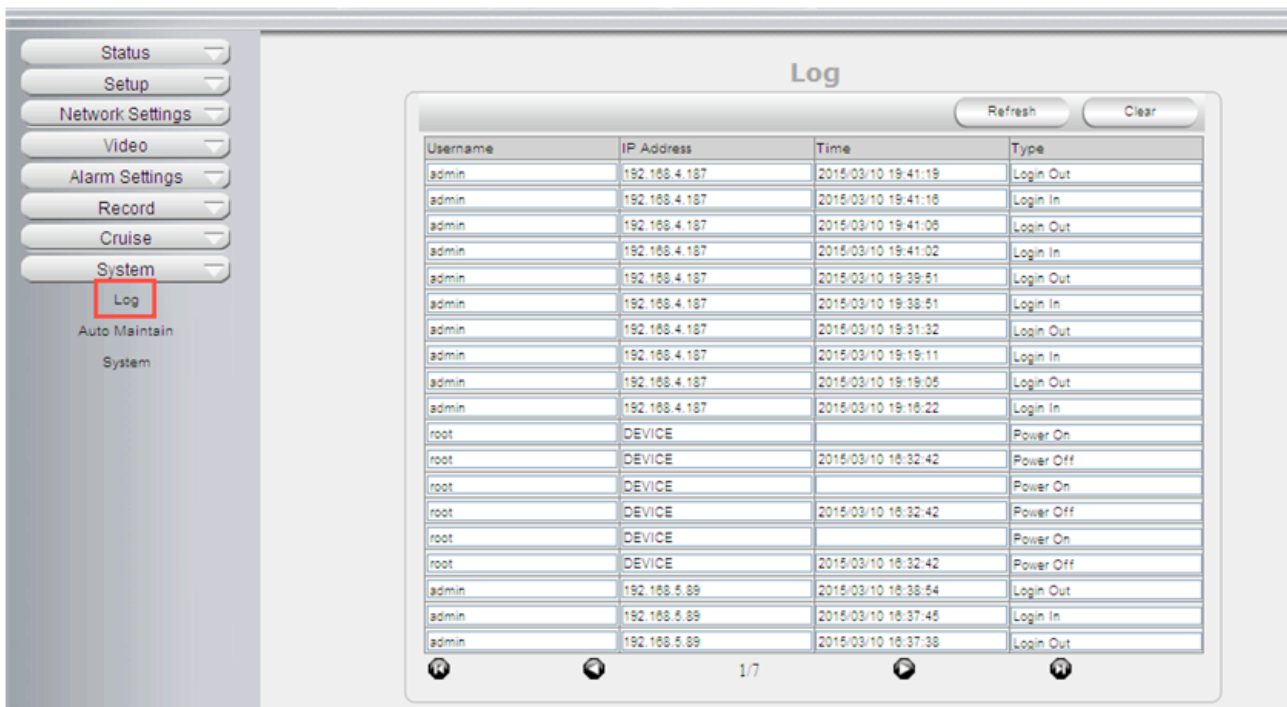
Note: After setup, user can go to live video screen, and call the "Cruse" under the panel.



4.7 System

4.7.1 Log

Log provides information of camera, login, log out, alarm, power on/off..etc;



4.7.2 Auto Maintain

Auto Maintain provides an auto protection of hardware; Set a time such as 24:00; Then camera will auto reboot; and refresh the hardware performance.

Auto Maintain	
Enable	<input checked="" type="checkbox"/>
Time	00:00

4.7.3 System

Reboot Device: Camera will get reboot.

Restore factory settings: User can restore factory settings once forget password, settings..etc.


Upgrade Device Firmware: To upgrade or degrade the camera firmware.(The firmware needs to store in the same camera you are viewing camera.)

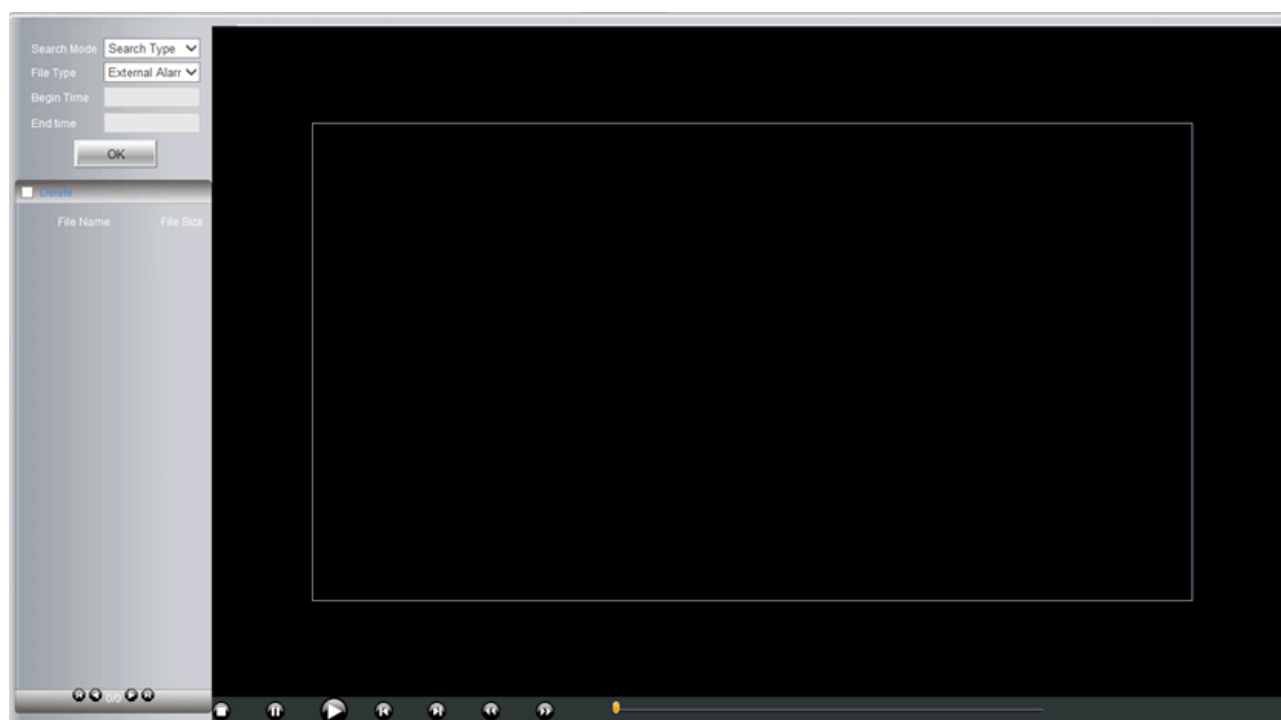
Upgrade Device Web ui: To upgrade or degrade the camera web ui. (The firmware needs to store in the same camera you are viewing camera.)

System	
<div>Reboot Device</div> <div>Restore Factory Settings</div>	
Upgrade Device Firmware	<input type="text"/> <input type="button" value="..."/> <input type="button" value="Start"/>
Upgrade Device Web UI	<input type="text"/> <input type="button" value="..."/> <input type="button" value="Start"/>

5. PLAYBACK for IE browser only

Note: Playback function shows under IE ActiveX mode only. Other browsers not support this feature.

Click  login the playback interface, this is for SD Card files playback. So If User not have SD Card, it will not show the playback interface.



Search Mode: User can search the record, snapshot..etc by different methods.

Search Type: External Alarm and Motion detection optional; Select External Alarm; Camera will search the alarm file from External alarm which comes from other device; Select motion detection, Camera will search the alarm file from motion detection.

Search All: Camera will search all file in SD Card.

File type: External Alarm and Motion detectio optional. This option works only work when user select Search Type from Search mode

Begin Time and End Time: This feature work when user select Search Time from Seach mode; Select a begin time, and end time, camera will search these files in the time area.

Click "OK" icon, will pop-up a window for search file, set the mode or time, click OK to submit, then all the correlative files will be listed on the left side.

After searching, files will be listed on the left side window, choose the file, double click it or click play icon 

to start replay. Users can check the replay file information here, do other operation such as **Stop**, **Pause**, **Previous**, **Next**, **Fast Backward**, **Fast Forward** etc.



6. FREQUENTLY ASKED QUESTIONS

1. I have forgotten the administrator username and/or password

There is a **[RST]** button on the rear panel, keep the power on, hold the reset button for 30 seconds, it will restore back to factory default settings as below:

Username: admin


Password: pylecam

NOTE: Please don't press **RST** button unless you are sure you want to do it.

2. There is no picture displayed in IE browser (For IE only)

It maybe the ActiveX problem,

If using the IE browser for the first time, you should install the ActiveX control, details as below:

Before login, click the ActiveX icon  at the right side of interface to download, save the file, run it to install the ActiveX.

3. Fail to visit IP camera via IE after upgrading (For IE Only)

Solution: Clear the browser buffer.

Steps: Open IE>click "Tools"> "Internet Options">"General">"Delete"> "Internet temporary files", delete the cookies and temporary files, then click "OK" and re-login.

4. The video is not smooth

Possible reason 1: The frame rate value is too small.

Solution: Increase the frame rate value.

Possible reason 2: Too many users are connecting to the device.

Solution: Close some connection or reduce the video frame rate.

Possible reason 3: Network bandwidth is too low, lots of lost packets.

Solution: Reduce the video frame rate or video compression bit rate.

5. Fail to visit IP camera via IE browser

Possible Reason 1: Network is disconnected.

Solution: Connect your PC to network, check whether the network works well or not. Check if there's a problem with the cable connection, or network problem caused by PC virus.

Possible reason 2: IP Address has been occupied by other devices.

Solution: Stop the connection between IP camera and network; connect the IP camera to PC.

Directly reset IP address according to the proper operations recommended.

Possible reason 3: IP addresses are in different subnets.

Solution: Check IP address, Subnet masking and Gateway.

Possible reason 4: Physical address of network conflicts with the IP camera.

Solution: modify the physical address of IP camera.

Possible Reason 5: Web port has been modified.

Solution: Contact as Network Administrator to obtain related information.

Possible Reason 6: Unknown.

Solution: Press RESET to restore to factory settings then connect it again, the default IP address is 192.168.1.155, subnet mask is 255.255.255.0

6. The color of image is abnormal (Green or other color)

Sometimes the IP camera images cannot be displayed properly because of different graphics cards, the images appears to be green or other colors, then you should run the program "Config.exe" from the downloaded OCT files.

(or run C:\windows\system32\Config.exe) to set the following parameters for the display buffer: auto-detection, used display card memory or system memory, then run IE, connect IP camera again.

7. There is no voice while monitoring

Possible Reason 1: No audio input connection.

Solution: Check audio connection of the host.

Possible Reason 2: the relative audio option of IP camera is OFF.

Solution: Check audio parameter settings to see if you have set the audio option ON, but without external audio input.

8. Image processing doesn't work properly

Possible Reason 1: System problem, DirectX function is disabled, which will cause slow display of images and abnormal color.

Possible Reason 2: Hardware problem, graphics card doesn't support image acceleration and hardware zooming functions. (For hardware issue, the only solution is to change your graphics card).

Solution: Install DirectX image driver, then click "Start">"Run">input "dxdiag", set enable "DirectDraw Acceleration" "Direct3D Acceleration" "AGP Texture Acceleration" functions.

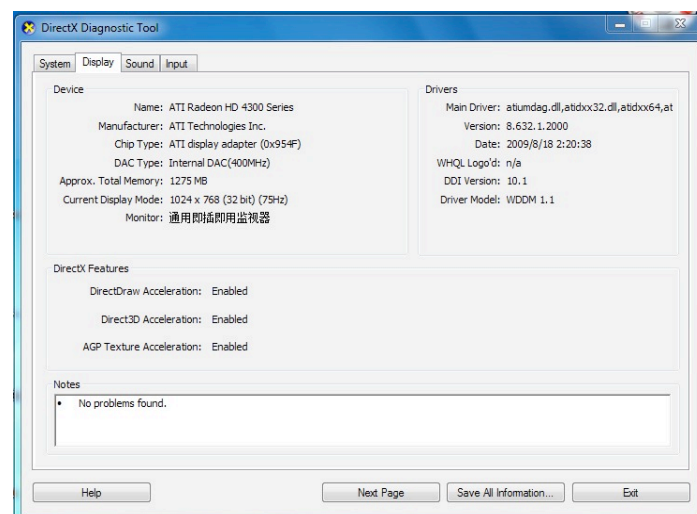


Figure 13.0

Note: If you are unable to do it, it means your DirectX is not installed properly or hardware doesn't support this function.

9. Fail to use DDNS

Possible Reason 1: The PC or IP Camera can't connect to the internet.

Solution: Check the internet connection and settings.

Possible Reason 2: Port forward is not set in router.

Solution: Set the port forward of extranet in router correctly.

For example, if IP Camera address is: 192.168.1.100, Media port is 38401, Web port is 85, factory DDNS is <http://test.aipcam.com>.

Set Port Forwarding in the router.

This is an important step. You need to set port forwarding in your router, to refer to the IP of your camera correctly, for DDNS to work. There are so many kinds of routers, so it's difficult to show fixed steps, but here are some samples of different router's port forwarding settings, just for reference:

TP-LINK:

1. Login to the router.



2. Choose "**Forwarding**", select "**Virtual Servers**"

3. Click the Add New button, pop-up below:

Add or Modify a Virtual Server Entry

Service Port:	<input type="text"/>	(XX-XX or XX)
IP Address:	<input type="text"/>	
Protocol:	<input type="text" value="ALL"/>	
Status:	<input type="text" value="Enabled"/>	
Common Service Port:	<input type="text" value="-Select One-"/>	

Figure 13.1

Fill in the service port (**don't use 80**), IP address of the camera, then click Save

NOTE: The port and IP address should be the same as the camera.

Fill in the **web port**, for example port 85, IP address as 192.168.1.100, click Save.

(1) Repeat step 3 above, it will pop-up the window again, fill in the **media port** as 38401, IP address as 192.168.1.100, then save.

(2) Then check the “Device Info” – “DDNS Status”,

It will show DDNS: <http://test.aipcam.com:85> , input this link in IE, then you can visit this camera remotely.

BELKIN:

1. Login to the router.
2. Choose “**Firewall**”, select “**Virtual Servers**”
3. Input the port (**don't use 80**) and IP address, then click save.

NOTE: The port and IP address should be the same as the camera.

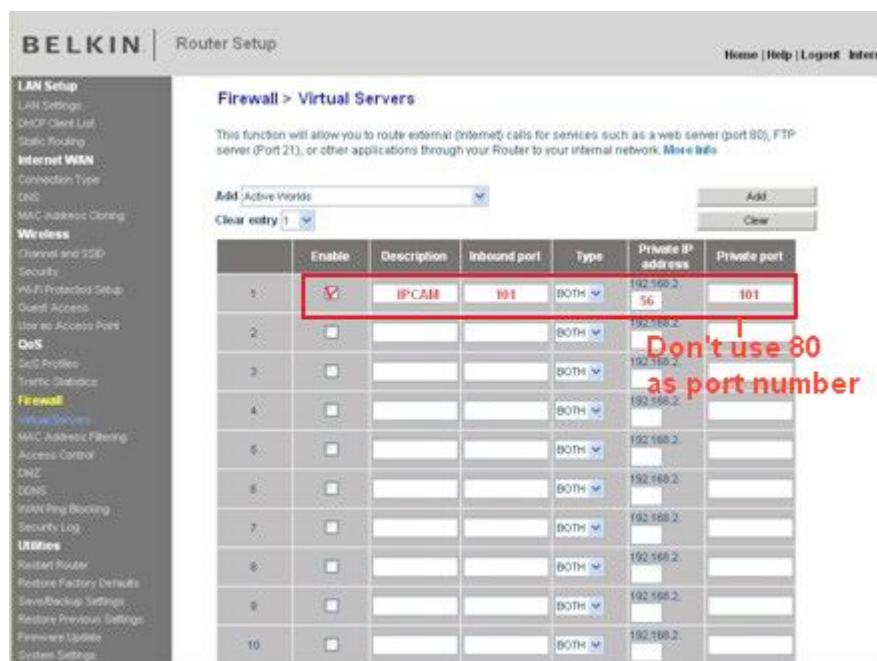


Figure 13.2

DLINK:

1. Login to the router.
2. Choose “**Advanced**”, select “**Virtual Servers**”
3. Input the port, IP address, Protocol, then click save.

NOTE: The “**public port**” & “**private port**” should be the same as camera’s port, choose the protocol to be “**both**”.

DIR-601	SETUP	ADVANCED	TOOLS	STATUS	SUPPORT
---------	-------	----------	-------	--------	---------

VIRTUAL SERVER

PORT FORWARDING

APPLICATION RULES

QOS ENGINE

NETWORK FILTER

ACCESS CONTROL

WEBSITE FILTER

INBOUND FILTER

FIREWALL SETTINGS

ROUTING

ADVANCED WIRELESS

ADVANCED NETWORK

IPV6

VIRTUAL SERVER

The Virtual Server option allows you to define a single public port on your router for redirection to an internal LAN IP Address and Private LAN port if required. This feature is useful for hosting online services such as FTP or Web Servers.

Save Settings

Don't Save Settings

24 -- VIRTUAL SERVERS LIST

			Port	Traffic Type	
<input type="checkbox"/>	<div>Name</div> <div>rivomaxcam</div> <div><< HTTP</div>		<div>Public Port</div> <div>81</div>	<div>Protocol</div> <div>Both</div>	<div>Schedule</div> <div>Always</div>
	<div>IP Address</div> <div>192.168.0.107</div> <div><< Computer Name</div>		<div>Private Port</div> <div>81</div>	<div>256</div>	<div>Inbound Filter</div> <div>Allow All</div>
<input type="checkbox"/>	<div>Name</div> <div></div> <div><< Application Name</div>		<div>Public Port</div> <div>0</div>	<div>Protocol</div> <div>TCP</div>	<div>Schedule</div> <div>Always</div>
	<div>IP Address</div> <div>0.0.0.0</div> <div><< Computer Name</div>		<div>Private Port</div> <div>0</div>	<div>6</div>	<div>Inbound Filter</div> <div>Allow All</div>
<input type="checkbox"/>	<div>Name</div> <div></div> <div><< Application Name</div>		<div>Public Port</div> <div>0</div>	<div>Protocol</div> <div>TCP</div>	<div>Schedule</div> <div>Always</div>
			<div>Private Port</div>		<div>Inbound Filter</div>

Helpful Hints...

Check the **Application Name** drop down menu for a list of predefined server types. If you select one of the predefined server types, click the arrow button next to the drop down menu to fill out the corresponding field.

You can select a computer from the list of DHCP clients in the **Computer Name** drop down menu, or you can manually enter the IP address of the LAN computer to which you would like to open the specified port.

Select a schedule for when the virtual server will be enabled. If you do not see the schedule you need in

Figure 13.3

7. SPECIFICATIONS

Image Sensor	Image Sensor	1/4" Color CMOS Sensor
	Display Resolution	1280 x 720 Pixels (1000K Pixels, i.e. 1.0 Megapixel)
	Lens	3.6mm
	Mini. Illumination	0.5 Lux
	Viewing Angle	60-90 Degree
Audio	Input	Built-in Microphone
	Output	Built-in Speaker
	Audio Compression	ADPCM
Video	Image Compression	H.264, MJPEG
	Image Frame Rate	30fps (VGA), 10fps (QVGA)
	Resolution	1280 x 720 (VGA), 640 x 480 (QVGA)
	Flip Mirror Images	Vertical / Horizontal
	Light Frequency	50Hz, 60Hz, Outdoor
	Video Parameters	Brightness, Saturation, Contrast, Hue
Communication	Ethernet Interface	Build in 10/100Mbps, Auto MDI/MDIX, RJ-45
	Supported Protocol	TCP/IP HTTP DNS DHCP PPPoE SMTP FTP SSL TFTP NTP ARP/RARP NFS RTSP RTP RTCP
	Compress rate level	128Kbps ~ 4Mbps
	Wireless Standard	IEEE 802.11b/g/n
	Data Rate	802.11b: 11Mbps (max.), 802.11g: 54Mbps (max.), 802.11n: 150Mbps (max.)
	Wireless Security	WEP & WPA WPA2 Encryption
Physical	Pan/Tilt Angle	Horizontal: 340° & Vertical: 130°
	Infrared Light	8 IR LEDs, Night visibility up to 10 meters
Power	Power Supply	DC 5V/2.0A (EU, US, AU adapter or other types optional)
	Power Consumption	7 Watts (Max.)
Environment	Operate Temper.	0° ~ 55°C (14°F ~ 131°F)
	Operating Humidity	20% ~ 85% non-condensing
	Storage Temper.	-10°C ~ 60° (14°F ~ 140°F)
	Storage Humidity	0% ~ 90% non-condensing
PC System Requirements	CPU	2.0GHZ or above (suggested 3.0GHZ)
	Memory Size	256MB or above (suggested 1.0GHZ)
	Display Card	64M or above
	Supported OS	Microsoft Windows 2000/XP/Vista/7
	Browser	IE6.0/7.0/8.0/Firefox/Safari/Google chrome or other standard browsers
Certification	CE, FCC, RoHS	

8. OBTAINING TECHNICAL SUPPORT

We hope your experience with your IP network camera is enjoyable, but if you experience any issues or have any questions that this User's Guide has not answered, please email us.

If your camera does not support some special functions shown in this manual, please contact our technical support team to obtain the latest Firmware and WEB UI file for upgrading.

Statement: If you found any bug of software, pls kindly not discuss in the public place or website, contact us by email or phone, we will give you a quick shot.

FCC Caution

THIS DEVICE COMPLIES WITH PART 15 OF THE FCC RULES.

OPERATION IS SUBJECT TO THE FOLLOWING TWO CONDITIONS:

- (1) THIS DEVICE MAY NOT CAUSE HARMFUL INTERFERENCE, AND
- (2) THIS DEVICE MUST ACCEPT ANY INTERFERENCE RECEIVED, INCLUDING INTERFERENCE THAT MAY CAUSE UNDESIRE OPERATION.

This equipment generates and uses radio frequency energy, and if not installed and used properly, that is, in strict accordance with the manufacturer's instructions, it may cause interference to radio and television reception. It has been type tested and found to comply with the limits for remote control devices in accordance with the specifications in Sub-Parts B and C of Part 15 of FCC Rules, which are designed to provide reasonable protection against such interference in a residential installation. However, there is no guarantee that interference will not occur in a particular installation. If this equipment does cause interference to radio or television reception, which can be determined by unplugging the equipment, try to correct the interference by one or more of the following measures.

- Reorient the antenna of the radio/TV experiencing the interference.
- Relocate the equipment with respect to the radio/TV.
- Move the equipment away from the radio/TV.
- Plug the equipment into an outlet on a different electrical circuit from the radio/TV experiencing the interference.
- If necessary, consult your local dealer for additional suggestions.

NOTE: Modifications to this product will void the user's authority to operate this equipment.