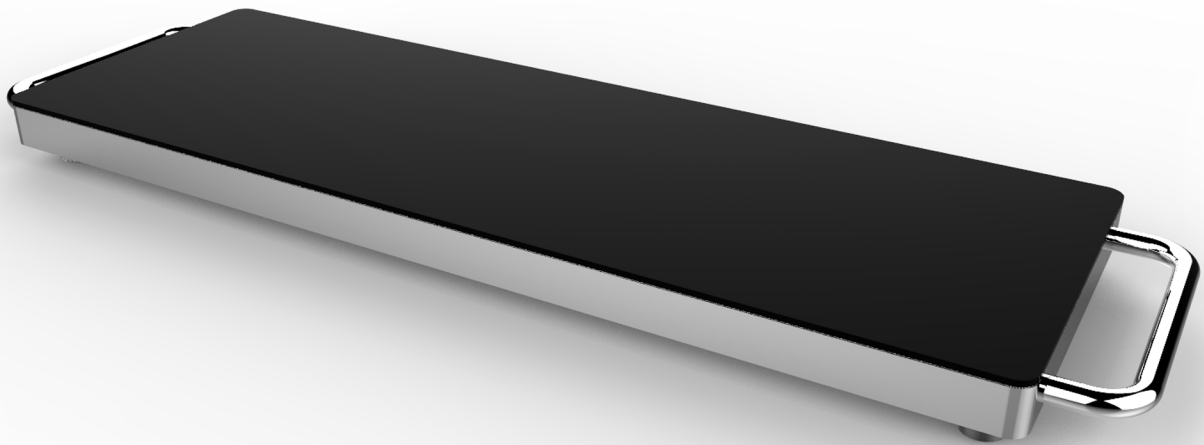


WARMING TRAY USER MANUAL



PKWTR40

PYLE[®]
PyleAudio.com

IMPORTANT SAFEGUARDS

When using any electrical appliance, basic safety precautions should always be followed, including the following:

1. Read all instructions.
2. Do not touch hot surfaces. Use handles.
3. To protect against electrical hazards, do not immerse warming tray, cord, or plug in water or other liquid.
4. Close supervision is necessary when any appliance is used by or near children.
5. Unplug from outlet when not in use and before cleaning. Allow to cool completely before storing or cleaning.
6. Do not operate warming tray with a damaged cord or plug or after the appliance malfunctions, or has been damaged in any manner. Contact customer service center to return for examinations, repairs or adjustments.
7. Do not use outdoors.
8. Do not let cord hang over edge of table or counter, or touch hot surfaces, including the stove.
9. Do not place on or near a hot gas or electric burner or in a heated oven.
10. Do not use appliance for other than its intended use.
11. To disconnect, turn off the switch, then remove plug from wall outlet.
12. Caution: Hot surface. After the appliance is turned off, the heated surface may remain hot or warm for an extended period of time.
13. Do not use with broken warming surface. If glass surface should break, cleaning solutions and spillovers may penetrate the broken glass and create a risk of electric shock.
14. Clean glass with caution – if a wet sponge or cloth is used to wipe spills on a hot cooking area, be careful to avoid steam burn, some cleaners can produce noxious fumes if applied to a hot surface.

SAVE THESE INSTRUCTIONS

This appliance is for HOUSEHOLD USE ONLY. No user-serviceable parts are inside. Do not attempt to service this product.

A short power supply cord is provided to reduce the risk resulting from becoming entangled or tripping over a long cord.

AN EXTENSION CORD MAY BE USED WITH CARE: HOWEVER, THE MARKED ELECTRICAL RATING SHOULD BE AT LEAST AS GREAT AS THE ELECTRICAL RATING OF THE WARMING TRAY.

The extension cord should not be allowed to drape over the countertop or tabletop where it can be pulled on by children or tripped over.

OPERATING INSTRUCTIONS

1. The power switch of the warming tray has a light in it, turn on the switch, the light comes on- this indicates the tray is warming up. Preheat for at least 5 minutes before placing pans on tray. The temperature on the glass surface is around 95° C
2. Do not put food directly on surface. Warm food in appropriate containers only. Do not use plastic dishes or plastic wraps on tray.
3. The appliance is NOT meant to be used to defrost or cook food.
4. After use, switch off the unit unplug the appliance.

PARTS

1. Toughened glass
2. Handle
3. Non-Slip Feet
4. Power switch with light
5. Power cord



SUGGESTIONS FOR USE

1. The warming surface is ideal for any oven safe dish, such as a casserole or baking sheet. Any dish can go right from the oven to the tray top to keep foods warm and ready to serve. Food should never be placed directly on the warming surface.
2. Keep entrees warm while preparing other foods.
3. An attractive way to present and serve warm desserts.
4. To help maintain safe food temperature and keep foods moist, be sure to always cover food placed on your warming tray.

CLEANING & MAINTENANCE

1. When performing any cleaning or maintenance task, be sure to unplug unit from power outlet first, and allow to cool.
2. Do not immerse warming tray or plug in water
3. The most effective and safe way to clean the warming tray is with a mild detergent and a soft moist damp cloth. Do not use any scouring agents. Do not allow water to spill or seep into frame.
4. User-Maintenance operations recommended by the manufacturer, and any other servicing should be performed by an authorized service representative.