



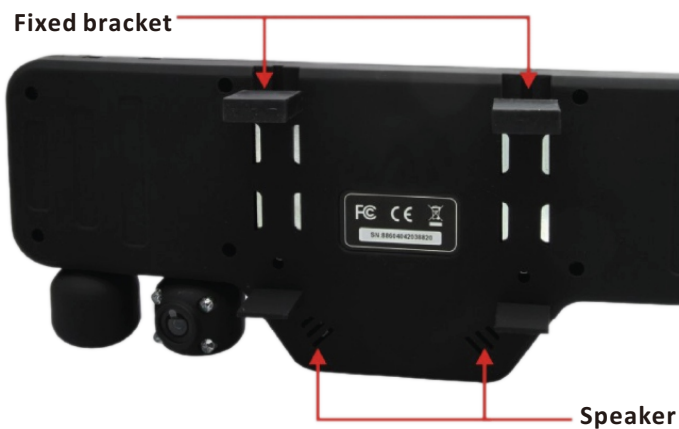
120 degree angle
180 degrees rotation of lens

PLCMDVR 52

Rear View HD DVR dual dash cam system

High quality double lens mirror driving recorder, with 120 degree ultra wide angle visual range, installed in your car, can be mastered easily let you take less than the dead, using double lens design, can according to their own interests while since recorded, amusement ride, set the language, time, date, let you more easily as proof or travel record purpose, 3.5 large screen design, when there is an accident, can immediately play, reducing the truth, can be for video footage of the key search.

Key Definition



Key Definition

Full HD 1080P

MOV@H.264-the most advanced compression format for longer working time

3.5 inch TFT display

3.5 inch TFT display with LED backlight module brings more clear video and easy files management.

Travel Essentials

Record the beautiful scenery along the way keep moments

Loop recording

Automatically over write old files for non-stop recording

G-sensor

In video mode, G-sensor automatically boots to save the permanent files which will not be over written when loop recording, OFF/HIGH/Medium for different working environment.

120° wide viewing angle

compared with other products, A107 is equipped with wider viewing angle lens.

4 times digital zoom

the camera mode in standby, video or, click or press the keys can be 1X/2X/3X/4X times
digital zoom magnification (4 times), click or long key press can be 1X/2X/3X/4X times
digital narrow (minimum 1:1), 1280x720 in the video mode of resolution is the digital edge coke function.

HDMI

Connect the HD TV using the HDMI cable, TV set switching to HDMI video channel, boot display video, you can take pictures, playback operation.

Voice recording setup

Optional voice recording and Mute with easy swich.

Instructions for Use

1. Turn off car engine.
2. Insert TF card to Micro SD slot. Note: Pls use high speed TF card (Class 6 or above), and capacity not less than 512MB. The Micro SD slot supports TF card up to 32GB.
3. Fix the DVR to car original rearview mirror.
4. Plug car charger into car cigarette lighter.
5. Connect charge extension cable with car charger and insert to DVR DC5V jack.
6. Start the engine, DVR will turn on automatically and start recording. When recording, recording light and charging indicator keep flashing (charging indicator will stop flashing after charge fully).
7. When it is recording, other buttons have no function. Press POWER/OK button to stop recording and then other buttons will have function.

Video mode



Channel: Channel 1, channel 2 and dual channels. Choose channel 1, front camera will work. Choose channel 2, back camera will work. Choose dual channels, both cameras will work.

Exposure: Can choose the exposure parameter when recording or taking pictures.

White Balance: Auto, Daylight, Clear, Cloudy, Fluorescent, Incandescent

Loop recording: Can set the time of loop recording: 3 Minutes, 5 Minutes, 10 Minutes.



Motion Detection: Off/On. This DVR is built-in acceleration sensor, which can detect sudden change of acceleration (collision or emergency braking), and instantly trigger recording before accident happened.

Record Audio: Voice recording Off/On.

Gsensor: In video mode, G-sensor automatically boots to save the permanent files which will not be overwritten or deleted when loop recording. Off/High/Medium/Low for different environment.



Date: On/Off/Set Date. Choose 'On', it will show date and time when recording, while 'Off' is not to show; 'Set Date' is to change date and time.

Auto Power Off: Can set auto power off time (1 minute, 3 minutes, 5 minutes) when it is not recording. Choose 'OFF' to close this function.

Beep Sound: Can choose beep sound On/Off when press buttons.

Parking Monitor: Low/Medium/High means the level of vibration sensitivity. After parking the car, if there is slight vibration, the DVR will turn on automatically and start recording and locked the videos(This DVR is battery-powered). Choose 'Off' to close this function.



Language: Language setting.

Frequency: 50Hz/60Hz.

TV Mode: PAL/NTSC

Image rotation: Off/On.

Setup mode



Format: Format TF card.

Default Setting: Factory reset.

Version: Software version.

Buttons

MODE: Short press for switch of recording, playback and photo modes. Long press for mode switch of day and night modes.

Pic 1: Recording mode. Short press POWER/OK to start recording.

Pic 2: Playback mode. Replay recorded video files or photos.

Pic 3: Photo mode. Short press POWER/OK to take a picture.

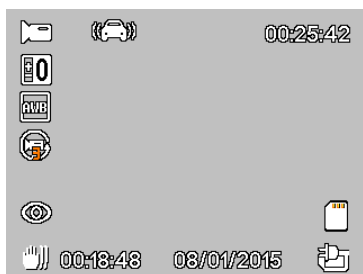


图 1



图 2

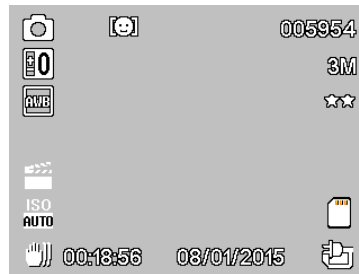


图 3

MENU: Short press for switch of channel 1, channel 2 and dual channels. Long press to enter into setting menu.

DOWN: Move down

UP: Move up.

POWER/OK: Short press for 'OK', eg: In recording mode, short press this button to start or end recording. Long press three seconds for power on/off.

		Is Video		Gsensor		Video Time
		Exposure		Battery indicator		Time
		white Balance		Micro SD		Date
		Loop recording		Video Playback		
		Parking Monitor		take a picture		

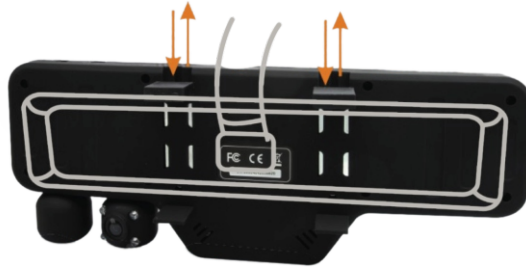
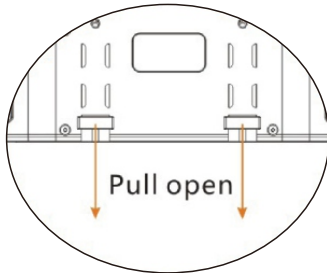
Technical parameters

LCD Screen Size	3.5 inch high definition TFT screen
Pixels	1 M
Shot	120 high-definition wide-angle lens
Rotation angle of the camera	Rotated 180 degrees
Minimum illumination	1 LUX
Video resolution	Dual camera head 1920x720/1280x400 Single camera head 1440x1080/1280x720/720x480
Video video formats	MOV@H.264
Video frame rate	30
Photo resolution	Dual cameras: 1920x720/1280x400 Single-camera: 5M/3M/1.3M
Photo format	JPG
Loop recording	Off/2 minutes/5 minutes/10 minutes
Memory card type	SD card
Memory card capacity	Maximum support 32G
USB interface	USB 2.0
Power interface	DV5V,1000MA
Current frequency	50HZ/60HZ
Battery capacity	300mAH
Power consumption	300mA
Night vision lights	Support
Microphone / speaker	Support
HDMI output	Support
Language	English/German/French/Spanish/Italian/ Portuguese/Traditional Chinese/Simplified Chinese/Japanese/Russian/Korean
Weight	358.5g
Size	280x104x47mm

Installation

Telescopic bracket

Telescopic bracket design, four fixed support behind the machine started, alignment rearview mirror bracket can be fixed for each release, Models, simple installation and easy disassembly



Concealed wiring

To dark lines on the left side of the vehicle, from the inner edge of the front windshield above edge access the rearview mirror, the surface showed no traces of external connection, ensure the car's appearance

