

PLMR80W-PLMR80B

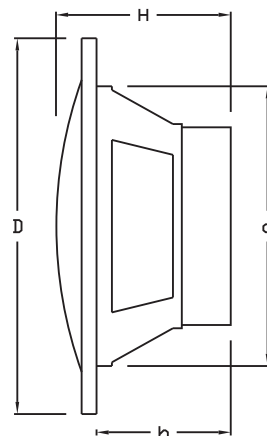
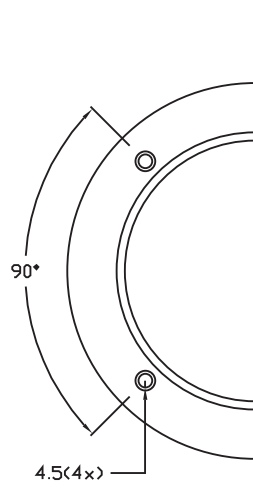
Dual 8" Waterproof Marine Speakers
Full Range Stereo Sound, 180 Watt

PYLE
PyleUSA.com

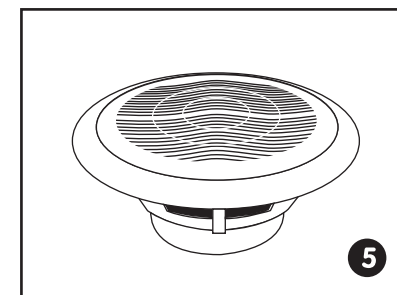
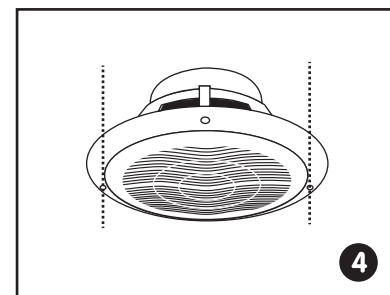
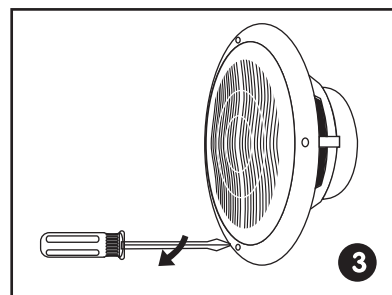
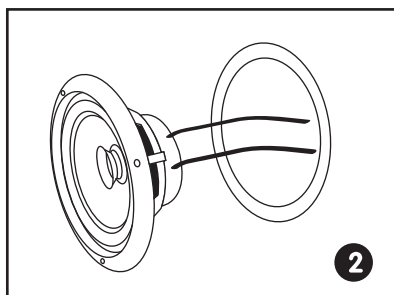
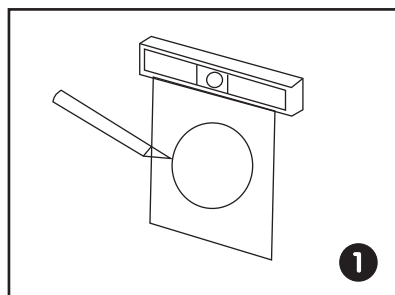
USER GUIDE

Features:

- Includes (2) Component Speakers
- Marine Grade Waterproof Construction
- Full Range Stereo Sound Reproduction
- Dual Cone Speakers
- Polypropylene Cone, Rubber Surround
- Molded ABS Machined Basket and Grill
- For Marine, Automobile & Off-Road Vehicles
- Universal Standard OEM Replacement Size
- Includes Speaker Wire & Mounting Hardware



Installation Guide



Cut the drywall.

Note: Always allow at least one-half inch between a wall stud and the speaker cutout or the locking tabs will not be able to swivel into place.

Connect the speaker wires to the speaker.

Screw down each of the four Phillips head screws. The locking tabs will swivel into place and secure the unit to the rear surface of the drywall. Put in the strips of adhesive to secure the grille.

Replace the metal grille.

Complete

Questions? Issues?
We are here to help!
Phone: (1) 718-535-1800
Email: support@pyleusa.com