

**PYLE**<sup>®</sup>  
PyleUSA.com



Questions or Comments?  
We are here to help!  
Phone: 1.718.535.1800  
PyleUSA.com/ContactUs



**PYLE**<sup>®</sup>  
PyleUSA.com



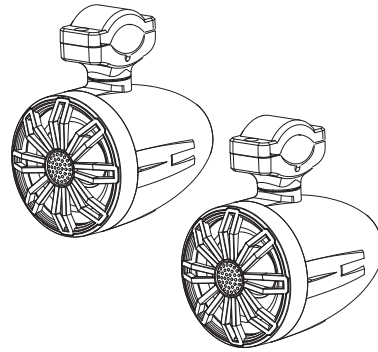
***PLMRBT33WT - PLMRBT33BK - PLMRBT33CR - PLMRBT33CR.5***  
**Waterproof Rated Off-Road Speakers**

***USER GUIDE***

**READ ALL INSTRUCTIONS CAREFULLY BEFORE USING THIS PRODUCT.  
RETAIN THIS OWNER'S MANUAL FOR FUTURE REFERENCE.**

### **Features:**

- Motorcycle Box Waterproof Stereo System
- 3.5" Long Excursion Woofer
- Completely Waterproof
- Bluetooth Wireless Music Streaming
- Compact & High-Powered Output
- Marine Grade Waterproof Rated Construction
- Weatherproof & Water-Resistant Housing
- Full Range Stereo Sound Reproduction
- Impressive Bass Response
- Sleek Design, Machine Molded Speaker Cabinet Housing
- Rugged, Universal Mount Bracket Design for Roll-Bar / Roll-Cage
- Used for Off-Road Outdoor Vehicles: ATV, UTV, 4x4, Jeeps, Marine Watercraft
- Quick Butt Connector for Speaker Wiring



### **Bluetooth Connectivity:**

- Built-in Bluetooth Wireless Streaming Receiver
- Works with All of Today's Latest Devices (Smartphones, Tablets, Laptops, Computers, etc.)
- Bluetooth Version: 4.0
- Bluetooth Network Name: 'Pyle'
- Bluetooth Network Password: '0000' (4 Zeroes)
- Wireless Range: 30' + ft.

### **What's in the Box:**

- (2) Speakers
- Mounting Bracket
- Remote Control

#### **California Prop 65 Warning**



This product contains Nickel Carbonate which is known to the state of California to cause cancer birth defects and other reproductive harm. Do not ingest.

For more info go to: [www.P65warnings.ca.gov](http://www.P65warnings.ca.gov)

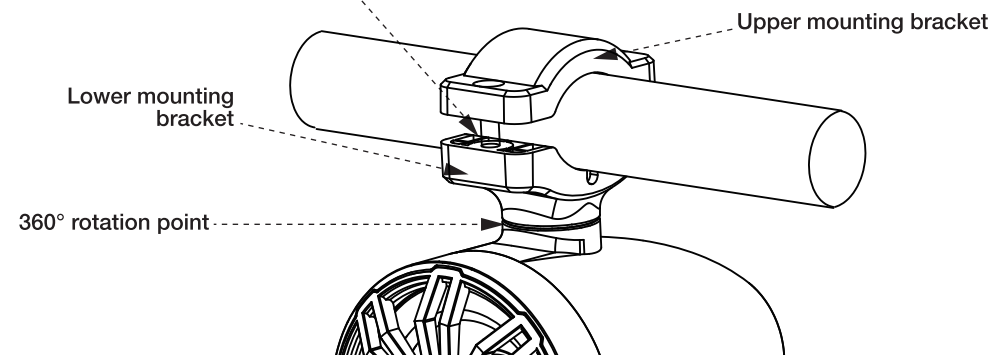
### **Technical Specs:**

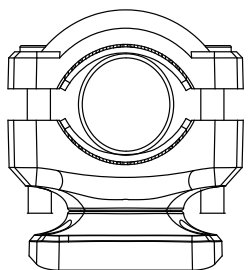
- Connectivity Technology: Bluetooth
- Mounting Type: Boat Mount, Motorcycle Mount
- Speaker Type: Outdoor, Woofer, Surround Sound
- Speaker Maximum Output Power: 40 Watts
- Power Output: 40 Watts per Pair, 20 Watts Each
- Marine Grade Waterproof Rating: IP-X5
- Speaker Size: 3.5" -inch (Each)
- Speaker Style: Active Speakers
- Speaker Type: Polypropylene Cone, Butyl Rubber Surround (x2)
- Remote Control Battery Operated, Requires (1) x 'CR2025' Battery
- Battery Type: 3V Lithium Battery
- Battery Life: Up to 2+ Hours
- Magnet: 25x7 (NdFeB)
- Frequency Response: 120Hz-12000 Hz
- Impedance: 4 ohms
- Sensitivity: 88 dB
- Mid-Woofer Voice Coil Type: 1", Aluminum
- Product Dimensions (D x W x H): 5.4" x 4.1" x 4.1" -inches

### **Mounting Bracket**

#### **Mounting Screws**

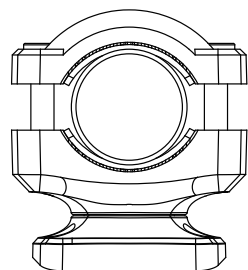
*Two types of mounting screws are provided to accommodate most mounting pole diameters.*





Min: 0.83in/21mm

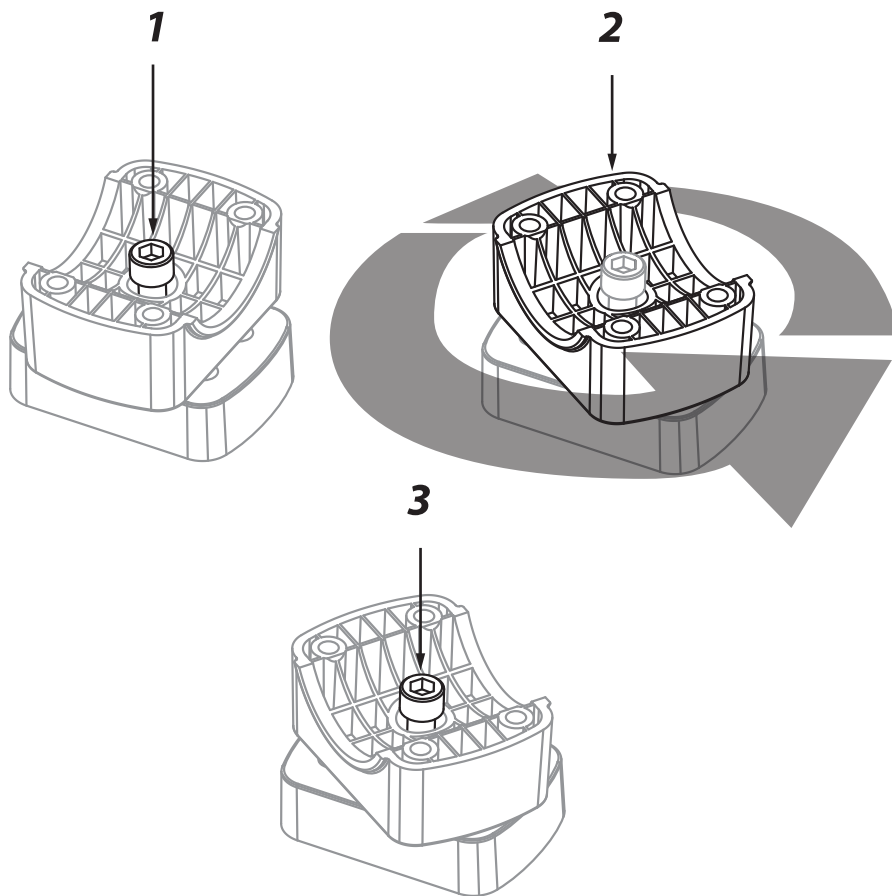
For diameters ranging  
from 0.83 to 1.57 inches,  
use the 35mm screws.



Max: 1.57in/40mm

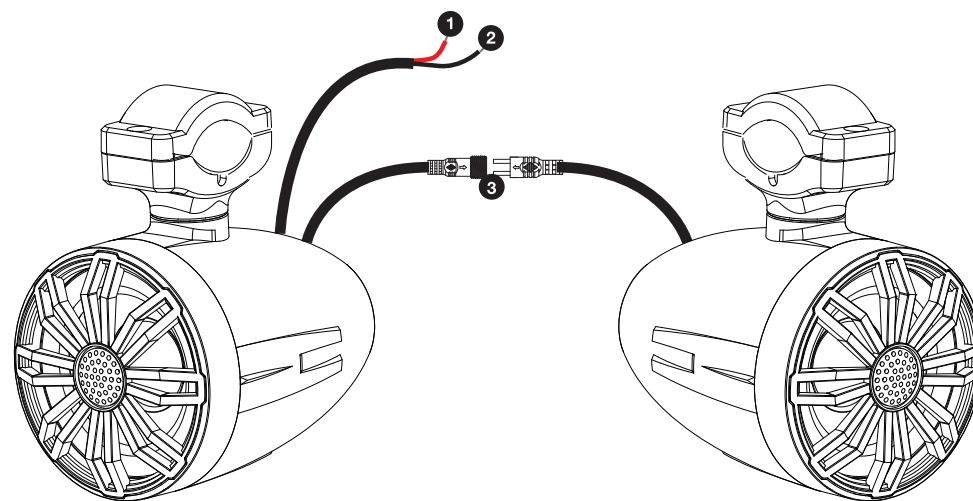
### 360° Rotation Function

1. Loosen the rotation adjustment screw.
2. Rotate the lower mounting bracket to the desired position.
3. Tighten the rotation adjustment screw.



### Installation Guide

1. Connect speaker and RGB power + (red wire, DC 12V)
2. Connect speaker and RGB power - (black wire, DC 12V)
3. Connect the speaker and RGB wires to each other



### Attributes

- 22 Dynamic Modes
- Card-Type RF Remote
- 20 Static Colors
- Ultra-Slim Design
- Very Smooth Effects
- Dynamic Demo Mode
- Speed Adjustable
- Easy Remote Pairing
- Brightness Adjustable
- Direct Color Select



## Remote Control Functions

### 1. Turn ON / Standby:

Press this key to turn the unit ON or switch to standby mode. When powered ON, the unit will automatically turn ON and restore the previous status.

### 2/9. Dynamic Mode Adjust:

Switch to dynamic mode from a static color, or cycle through different dynamic modes.

### 3/10. Dynamic Speed Adjust:

Adjust the dynamic playback speed. Press SPEED + to increase the speed and SPEED - to decrease it. The unit will switch to dynamic mode if this key is pressed while in static color mode.

### 4/5. Static Color Adjust:

Switch to static color mode from dynamic mode, or cycle through different static colors.

### 6. Direct Color Select:

Shortcut keys to static colors. When a specific color key is pressed, the LED will display the corresponding static color. The direct color options are also included in the COLOR + and COLOR - operations.

### 7/8. Brightness Adjust:

Adjust the brightness of static colors. Press BRIGHT + to increase brightness and BRIGHT - to decrease it. The unit will switch to static color mode if this key is pressed during dynamic mode.

### 11. Demo Mode:

Pressing this key will activate Demo Mode. In Demo Mode, 17 dynamic modes will play in a loop, each repeating 3 times.



## Precautions, Cleaning, Maintenance, and Storage Guide

### Precautions:

- Do not expose the speakers to extreme heat or direct flames.
- Avoid submerging the unit in water; while waterproof-rated, excessive exposure may damage internal components.
- Use only the supplied remote and power connections.
- Disconnect the power before installation, cleaning, or maintenance.

### Cleaning:

- Wipe the exterior with a soft, damp cloth.
- Do not use abrasive cleaners, solvents, or alcohol-based solutions.
- Ensure all connectors are dry before reconnecting the unit to power.

### Maintenance:

- Periodically inspect the mounting brackets and wiring for signs of wear or damage.
- Replace damaged cables or mounting hardware promptly.
- Check the battery in the remote control and replace as needed.

### Storage:

- Store the unit in a dry, cool location when not in use.
- Keep the remote control and accessories together to avoid misplacement.
- Avoid prolonged exposure to direct sunlight or moisture when stored.

## Register Product

Thank you for choosing PyleUSA. By registering your product, you ensure that you receive the full benefits of our exclusive warranty and personalized customer support.

Complete the form to access expert support and to keep your PyleUSA purchase in perfect condition.

Start Here



Model Number:  
**PLMRBT33WT**  
PyleUSA.com/pages/register