



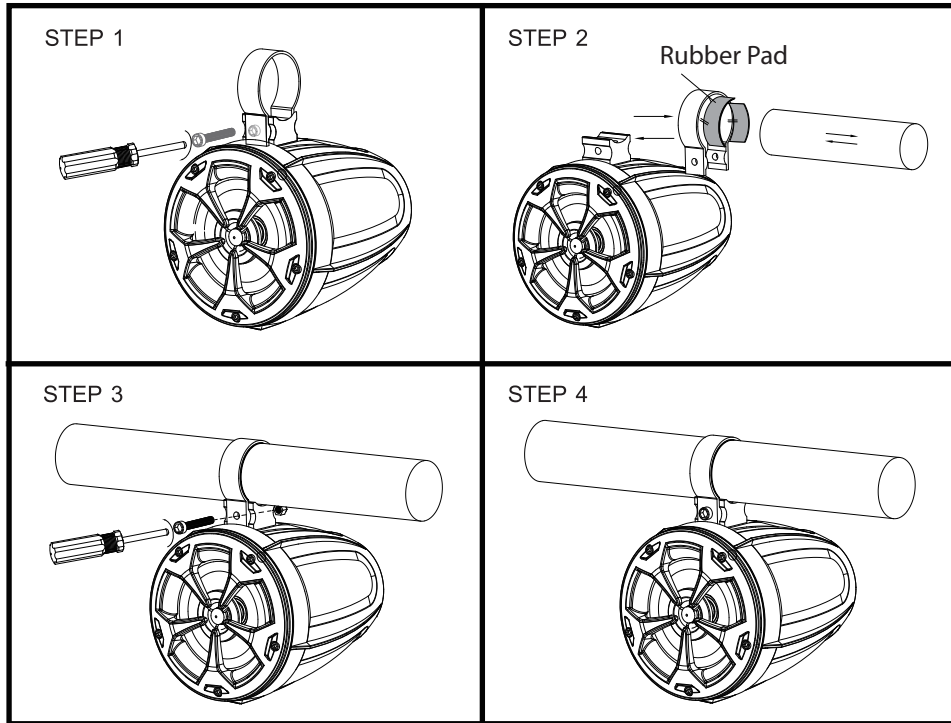
PLUTV43BTA

4" Waterproof Rated Off-Road Wireless BT Streaming Speakers

Amplified Vehicle Speaker System
for ATV, UTV, 4x4, Jeep (800 Watt)

PLUTV43BTA Installation

1. To avoid potential shorts in the electrical system, be sure to disconnect the (-) battery cable before installation. Use this unit with a 12-Volt battery and negative grounding only. Failure to do so may result in a fire or malfunction.
2. **Speaker Mounting suggestion as below:**



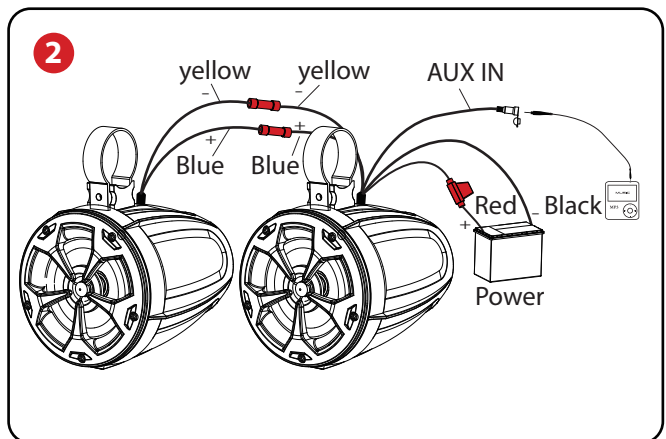
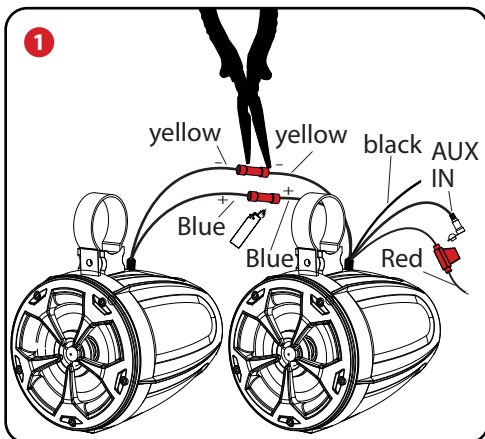
Step 1: Unbolting the mounting bracket

Step 2: Slide in the buckle with rubber pad attached to the bracket stand of the speaker
Attach the set to handle bar of vehicle / ship

Step 3/4: Attach screw to lock the buckle

Step 5: Using accessories of Butt Connector to Connect Speaker wires (See Illustration 1)

Step 6 : Using accessories of Butt Connector to Connect Power Cable (See Illustrations 2)



PLUTV43BTA

4" Waterproof Rated Off-Road Wireless BT Streaming Speakers

Amplified Vehicle Speaker System for ATV, UTV, 4x4, Jeep (800 Watt)

Features:

- Pro Audio PowerSport Speakers
- Amplified (Active + Passive) Speaker System
- Bluetooth Wireless Music Streaming Ability
- Bridged Sound System: (2) x 4.0" Woofers + (2) x 0.5" Tweeters
- Marine Grade Waterproof Rated Construction
- Weatherproof & Water-Resistant Housing
- 2-Way Full Range Stereo Sound Reproduction
- Built-in Digital Sound Processing Amplifier
- Integrated Speaker Power & Wiring Harness
- Compact Size & High-Powered Output
- Impressive Bass Response
- Aux (3.5mm) Input Jack
- Connect & Stream Audio from External Devices
- Sleek Design, Machine Molded Speaker Cabinet Housing
- Rugged, Universal Mount Bracket Design for Roll-Bar / Roll-Cage
- Used for Off-Road Outdoor Vehicles: ATV, UTV, 4x4, Jeeps, Marine Watercraft

Bluetooth Connectivity:

- Simple & Hassle-Free Pairing
- Instant Wireless Audio Streaming Ability
- Works with All of Today's Latest Devices
- Smartphones, Tablets, Laptops, etc.
- Bluetooth Version: V4.2
- Bluetooth Network Name: 'PYLEUSA'
- Wireless Range: 30+ ft.
- * Bluetooth Receiver Module Built-Into Amplifier of Main / Active Speaker

Technical Specs:

- Speaker Power: 800 Watt MAX
- Amp Power: 2 x 250 Watt MAX @ 4 Ohms (2 x 125 Watt RMS)
- Amp Type: 2-Channel, Class D
- Marine Grade Waterproof Rating: IP-X5
- Speaker Type: Polypropylene Cone, Butyl Rubber Surround (x2)
- Tweeter Type: Neodymium Dome (x2)
- Frequency Response: 85Hz-20kHz
- Impedance: 4 Ohm
- Magnet Type: 20 oz. Circuit
- Mid-Woofer Voice Coil Type: 1.0", Aluminum
- Sensitivity: 90 dB +/- 2 dB @ 1M/1W
- Anti-Thump Turn-On
- Soft Turn On/Off
- T.H.D: <0.05%
- S/N Ratio: >95dB
- Channel Separation: >65dB
- Amp Freq. Response: 10Hz- 30kHz
- Fuse: 1 x 10A
- Universal Mounting Brackets Roll-Bar / Roll-Cage Diameter: 1.25" ~ 2.0" -inches
- Speaker Dimensions (L x W x H): 5.62" x 8.38" x 7.29" -inches, with Bracket (Each)
- Power Supply: DC 12V
- Sold as: Kit

What's in the Box:

- (1) 4" Amplified Main Speaker
- (1) 4" Passive Support Speaker
- Speaker Connection Wires, 6.5' ft.
- Wire Butt Connectors, 16-22 AWG
- EVA Mounting Pads

PYLE

PyleUSA.com



VISIT US ONLINE:

Have a question?

Need service or repair?

Want to leave a comment?

PyleUSA.com/ContactUs

PYLE