

**Start Here**



Serenelifehome.com/  
register

# serenelife™



## ***PSLHTM25 - PSLHTM25.5***

### **Cordless Handheld Grass Cutter Shears**

# ***USER GUIDE***

PLEASE KEEP THIS MANUAL CAREFULLY FOR FUTURE REFERENCE.  
FOR HOUSEHOLD USE ONLY.

TABLE OF CONTENTS

FEATURES AND TECHNICAL SPECS ----- 3

CAUTION ----- 4

CORDLESS GRASS & SHRUB SHEARS LAYOUT ----- 7

PROPER USE ----- 9

OPERATION ----- 9

CLEANING ----- 11

REGISTER PRODUCT ----- 11

California Prop 65 Warning



WARNING:

This product contains Butyl benzyl phthalate (BBP) which is known to the state of California to cause cancer birth defects and other reproductive harm. Do not ingest.

For more info go to: [www.P65warnings.ca.gov](http://www.P65warnings.ca.gov)

### ***Features:***

- Versatile & Cordless Cutting Ability
- Landscaping Made Easy: Hassle-Free Design
- 2-in-1 System with Quick Change Blades
- Includes Grass Cutting Blade & Hedge Trim Blade
- Easy-to-Use 'Glide-Cut' Technology
- Built-in Rechargeable Battery
- Lightweight, Portable & Powerful
- Comfortable Handheld Grip
- Simple One-Handed Operation
- Integrated 'Blade Guard' for Precision & Control
- Includes Battery Wall Charger Adapter
- Perfect for Lawns, Gardens, Sidewalks, Walkways, Landscapes
- Safety Power Lock Switch

### ***What's in the Box:***

- (1) Machine with Grass Cutting Blade
- (1) Hedge Trimmer Blade
- (1) Battery Wall Charger Adapter

### ***Technical Specs:***

- Construction Material: Metal Alloy, Engineered ABS
- Operation Speed: 1000+ RPM
- Cutting Width (Grass Cutter): 70mm
- Cutting Width (Hedge Trimmer): 100mm
- Blade Length (Hedge Trimmer): 215mm
- Average Charge Time: 4 Hours
- Battery Type: Lithium, 3.6V
- Power: DC 5V, 500mAh
- Product Dimensions: 11.6" x 3.0" x 4.5" -inches

## **CAUTION: READ ALL SAFETY REGULATIONS AND INSTRUCTIONS.**



Failure to follow the safety regulations and instructions may result in electric shock, fire, or serious injury. Keep all safety regulations and instructions in a safe place for future use. The term "electric tool" refers to both electric tools powered by mains electricity (with a power cable) and battery-operated electric tools (without a power cable).

### **1. WORKPLACE SAFETY**

- Keep your work area clean and well-lit. Cluttered or dark areas can lead to accidents.
- Do not use this tool in potentially explosive environments containing combustible liquids, gases, or dust. Electric tools generate sparks that can ignite dust or vapors.
- Keep children and bystanders away from the electric tool during operation. Distractions can cause you to lose control of the tool.

### **2. ELECTRICAL SAFETY**

- The tool's plug must fit into the outlet. Do not modify the plug. Do not use adapter plugs with grounded electric tools. Unmodified plugs and matching outlets reduce the risk of electric shock.
- Avoid body contact with grounded surfaces such as pipes, radiators, and refrigerators. There is an increased risk of electric shock if your body is grounded.
- Keep the tool away from rain and wet conditions. Water entering an electric tool increases the risk of electric shock.
- Do not misuse the cord. Never use the cord to carry the tool, pull it, or unplug it. Keep the cord away from heat, oil, sharp edges, and moving parts. Damaged or tangled cords increase the risk of electric shock.
- When operating the tool outdoors, use an extension cord suitable for outdoor use. Outdoor-rated cords reduce the risk of electric shock.
- If operating in a damp environment cannot be avoided, use a Ground Fault Circuit Interrupter (GFCI). A GFCI reduces the risk of electric shock.



### **3. PERSONAL SAFETY**

- Stay alert, watch what you are doing, and use common sense when operating the tool. Do not use the tool while tired or under the influence of drugs, alcohol, or medication. A moment of inattention can result in serious injury.
- Always wear personal protective equipment (PPE), including safety goggles. Depending on the tool and application, additional PPE such as dust masks, non-slip footwear, hard hats, or hearing protection may be required.
- Ensure the tool is off before connecting to a power supply, inserting the battery, or picking it up. Accidental activation may cause injury.
- Remove any wrenches or adjustment tools before turning the tool on. A wrench or tool left attached to a rotating part can cause injury.
- Maintain proper footing and balance at all times. This ensures better control in unexpected situations.
- Wear appropriate clothing. Do not wear loose clothing or jewelry. Keep hair and clothing away from moving parts. Loose clothing or hair can be caught in moving parts.

### **4. USE AND CARE OF ELECTRIC TOOLS**

- Do not overload the tool. Use the correct tool for your application. Using the right tool ensures efficient and safe operation.
- Do not use the tool if the switch does not turn it on and off. A faulty switch makes the tool unsafe.
- Disconnect the plug from the outlet or remove the battery pack before adjusting, changing accessories, or storing the tool. This prevents accidental starting.
- Store idle tools out of reach of children. Tools are dangerous in the hands of untrained users.
- Maintain tools with care. Keep cutting tools sharp and clean. Properly maintained tools are easier to control and less likely to cause injury.
- Follow the instructions for using accessories. Using the wrong accessory or misuse may result in injury.

## **5. CAREFUL HANDLING OF CORDLESS EQUIPMENT**

- Ensure the tool is off before inserting the battery. Inserting a battery into an electric tool that is switched on can cause accidents.
- Only charge the battery in the charger specified by the manufacturer. Using a charger designed for a different battery type may cause fire.
- Use the correct batteries for the tool. The wrong batteries can cause injury and fire.
- Keep unused batteries away from metal objects that can create a short circuit. A short between battery terminals can cause burns or fire.
- In case of leakage, avoid contact with battery fluid. If contact occurs, wash with water and seek medical attention if necessary.

## **6. SERVICE**

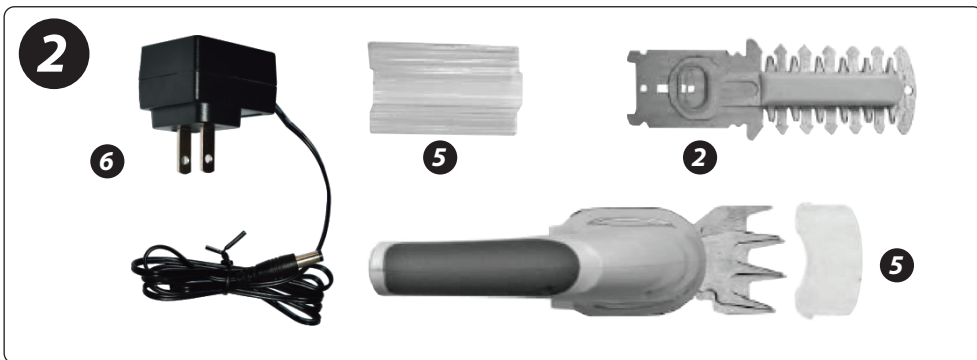
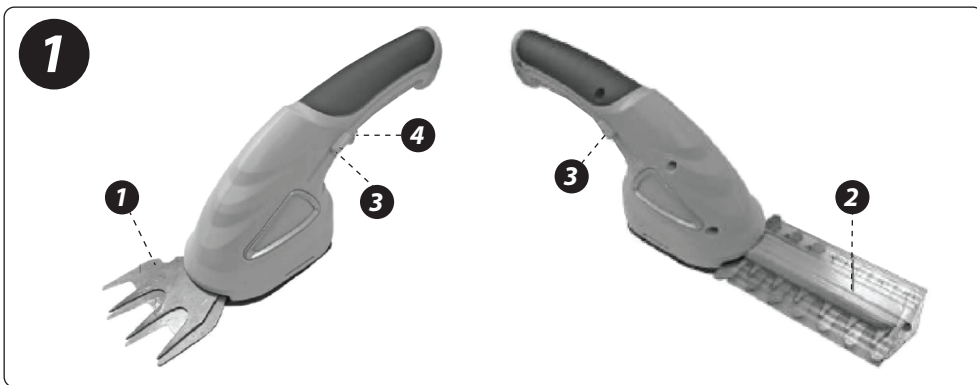
Have your tool serviced by qualified repair personnel using identical replacement parts. This ensures that the tool remains safe.

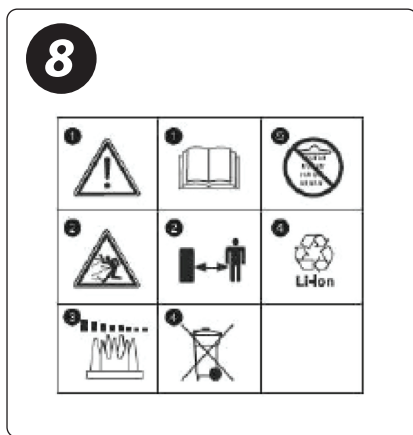
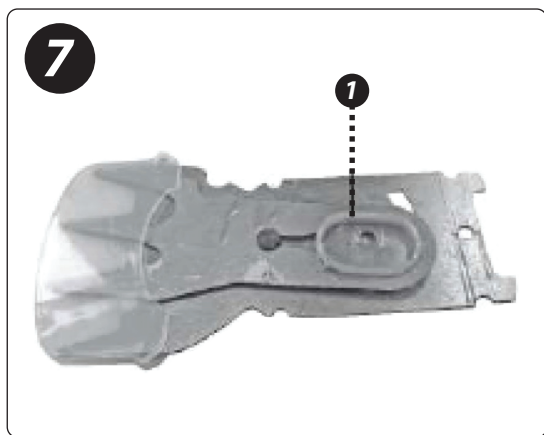
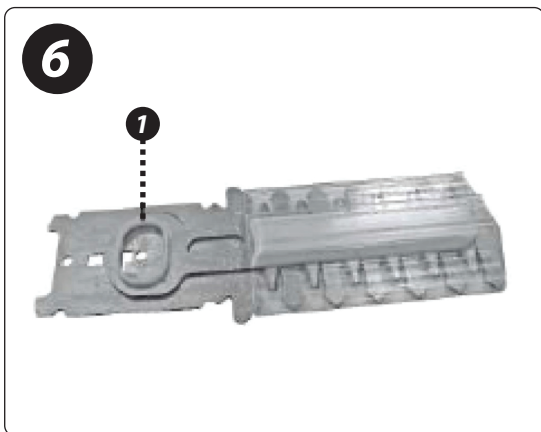
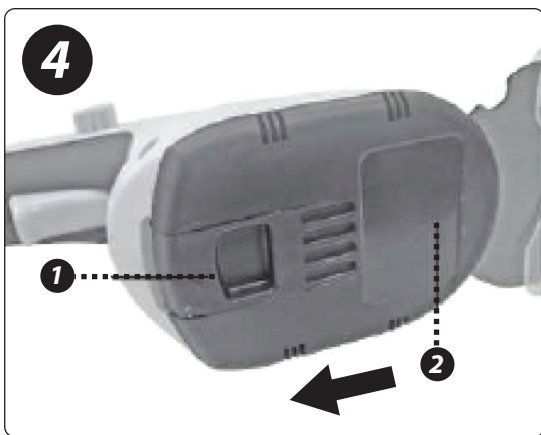
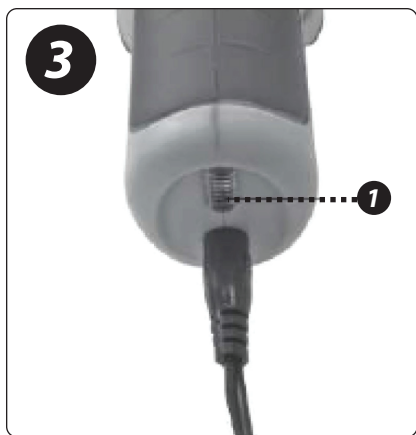
## **ADDITIONAL SAFETY NOTES**

- The battery pack supplied with your cordless tool is not charged. It must be charged before using the tool for the first time.
- The battery pack will reach its maximum capacity after approximately five charge and discharge cycles.
- Battery packs can lose their charge even when not in use. Regular charging is recommended.
- Check the voltage rating on the battery charger's rating plate. Always connect the charger to a power supply with the voltage specified. Never connect it to a different voltage.
- Keep the battery charger and cordless tool out of reach of children.
- Wear appropriate work attire, including safety goggles.
- Never open the battery pack. If the battery pack leaks and comes into contact with your skin, wash the affected area with soap and water. If battery acid enters your eyes, rinse them with clear water for at least 10 minutes and seek immediate medical attention. Neutralize other affected areas with a mild acid, such as lemon juice or vinegar.
- Protect the battery charger and its cord from damage and sharp objects. Have damaged cables repaired promptly by a qualified electrician.
- Ensure that the contacts of the battery pack do not come into contact with metallic objects such as nails or screws to avoid the risk of short-circuiting.
- Use only battery chargers intended for the specific battery pack.
- Do not use damaged battery chargers.

- Repairs should be conducted only by an authorized service center or dealer.
- Do not use the supplied battery charger to charge other cordless tools.
- Never allow the battery pack to fully discharge, as it can develop defects.  
Timely recharging will extend the battery pack's life.
- Recharge the battery pack when you notice a drop in the cordless tool's power.
- In heavy use, the battery pack may become warm.  
Allow it to cool to room temperature before charging.
- Protect your cordless tool and battery charger from moisture and rain.  
Do not use them near vapors or flammable liquids.
- Never throw the battery pack into a fire, as it may explode.
- Use the battery charger only in dry conditions and at an ambient temperature of 50–104°F (10–40°C).
- Do not store the battery charger in locations where temperatures may reach 122°F (50°C), such as inside a car parked in the sun.
- Do not ignite or expose the battery pack to fire.

## ***CORDLESS GRASS & SHRUB SHEARS LAYOUT***





- |                       |                    |
|-----------------------|--------------------|
| 1. Grass Cutter Blade | 4. ON/OFF Button   |
| 2. Shrub Cutter Blade | 5. Blade Guard     |
| 3. Safety Lock-off    | 6. Battery Charger |

## **PROPER USE**

This equipment is designed for cutting lawn edges and small areas of grass in private and hobby gardens. It is not suitable for use in public areas, parks, sports centers, along roadways, on farms, or in forestry. To use the tool properly, follow the instructions in the manufacturer's directions for use.

## **IMPORTANT!**

It is prohibited to use this tool to chop material for composting due to potential danger to persons and property. The tool is intended solely for its prescribed purpose. Any other use is considered misuse.

The user/operator, not the manufacturer, will be responsible for any damage or injuries caused by such misuse. Please note that this equipment is not designed for commercial, trade, or industrial use. The warranty will be void if the machine is used for such purposes.

## **OPERATION**

### **Before You Start**

#### **Charging the battery pack (Fig. 1/3):**

- Connect the charger to the charging station (Fig. 3).
- Ensure your mains voltage matches the voltage marked on the battery charger rating plate. Plug the charger into a socket outlet. The red LED (Fig. 3 / Item 1) will light up, indicating that charging voltage is available.
- Charging an empty battery pack will take approximately 3 to 5 hours.  
The battery pack may warm slightly during charging, which is normal.
- Once fully charged, the red LED will turn off. If the rechargeable battery fails to charge, check whether the socket outlet is working.
- To extend the battery life, recharge the battery pack when you notice a drop in the tool's performance. Never allow the battery pack to fully discharge, as this may cause a defect.

## **Operation**

Before cutting, clear the area of stones and other solid objects.

The safety lock-off (Fig. 1 / Item 3) prevents accidental start-up. To activate the tool, push the safety lock-off (Fig. 1 / Item 3) forward while pressing the ON/OFF switch (Fig. 1 / Item 4) simultaneously. Release the ON/OFF switch (Fig. 1 / Item 4) to stop the tool.

## **CUTTING THE GRASS**

Let the grass cutter glide above the ground. Best results are achieved when the grass is dry. If the tool's cutting performance drops, recharge it immediately to prevent full battery discharge.

## **TRIMMING HEDGES**

The tool can be used to trim small hedges and shrubs. Hold the tool slightly tilted towards the hedge and cut the sides from the bottom up, then trim the top. Watch for foreign objects that could damage the blades.

### **Best times to trim hedges:**

- Hedges that lose their leaves in autumn should be trimmed in June and October.
- Evergreen hedges should be trimmed in April and August.

## **CHANGING THE BLADES**

### **IMPORTANT! Risk of injury!**

To remove the blades, raise the lug (Fig. 4 / Item 1) and slide the cover (Fig. 4 / Item 2) in the direction of the arrow. Once removed, the toothed gears of the unit will be visible (Fig. 5). Be careful not to let dirt enter the gear unit during blade changes. To reassemble, reverse the process.

When fitting the grass cutter blade, ensure the pin for the eccentric connector (Fig. 5 / Item 1) aligns properly. For the hedge cutter blade, slide the eccentric mount (Fig. 6 / Item 1) into place, ensuring it aligns with the pin for the eccentric connector. Similarly, when refitting the grass cutter blade, adjust the eccentric mount (Fig. 7 / Item 1) so it aligns with the pin for the eccentric connector (Fig. 5 / Item 1).

## CLEANING

- Keep all safety devices, air vents, and the motor housing free from dirt and dust. Wipe with a clean cloth or use compressed air at low pressure.
- Clean the tool immediately after each use.
- Use a moist cloth and mild soap to clean the tool.  
Avoid using cleaning agents or solvents that may damage the plastic parts.  
Ensure no water enters the device.
- A few drops of oil (e.g., sewing machine oil) can improve blade performance, but never apply grease. To maintain accurate cutting, remove grass and dirt from between the blades.

## IMPORTANT!

*Never clean the tool under running water, especially with high pressure, due to the risk of injury and damage. Store your cordless grass cutter and hedge trimmer in a dry, frost-free place, out of the reach of children.*



## Register Product

Thank you for choosing SereneLife. By registering your product, you ensure that you receive the full benefits of our exclusive warranty and personalized customer support.

Complete the form to access expert support and to keep your SereneLife purchase in perfect condition.

## Start Here



Model Number:  
PSLHTM25

[SereneLifeHome.com/pages/register](http://SereneLifeHome.com/pages/register)

serenelife™



***Questions or Comments?***

**We are here to help!**

**Phone: 1.718.535.1800**

**[Serenelifehome.com/ContactUs](http://Serenelifehome.com/ContactUs)**