

PYLE[®]
www.PyleAudio.com



**PSTMH15 Multi-Purpose &
Multi-Surface Steam Cleaner w/
Hanging Garment Rack, 900 Watt**

USER MANUAL

INTRODUCTION

Thank you for choosing Pyle for your household cleaning needs. Our steamer products use the active power of steam without the use of chemicals; making it a green product that is safe for the ecosystem. You have begun the first step into transforming your house into a green, environmentally safe home. Our Pyle steam products are a modern way of cleaning that is efficient and far more sanitary than conventional methods. With the power of germ killing steam, dirt and grime can be eliminated in a matter of seconds. The tiny hot vapor molecules penetrate porous surfaces being cleaned, expanding and forcing dirt, debris, and bacteria to the surface. When used correctly, our steamers can kill dust mites and certain types of bacteria pathogens such as salmonella and E-coli on contact.

Since you do not need chemicals in order to use our products, not only will you see the savings in your wallet, but you have provided a safer place for you and your family to live in. We encourage you to improve your way of life, better the environment, and spend time enjoying your clean chemical free floor.

Maintenance

Stored in a dry& cool place.

After each use ,unplug ,release the steam completely by pressing the button,unscrew the cover slowly,wait for about 10 seconds to unscrew the cover completely,put the body upside down to drain the water .

Only after cooled down,the spare parts can be touched &cleaned with a wet pad.

Everything else can be soaked in water except the body &the power cord.

When cleaning ,please be sure the Link,the Hose and the Strait Nozzle unblocked.

Warning

Care Should be taken when using the appliance due to emission of steam.This appliance can only be used by persons 12 years old and above. People with reduced physical,sensory or mental capabilities or lack of experience and knowledge should be given supervision or instruction concerning use of the appliance in a safe way and understand the hazards involved.Children should not play with the appliance.Cleaning and maintenance shall not be done by children without supervision.Children should be supervised to ensure that they do not play with the appliance or accessories.



Correct Disposal of this product



This marking indicates that this product should not be disposed with other household wastes throughout the EU. To prevent possible harm to the environment or human health from uncontrolled waste disposal, recycle it responsibly to promote the sustainable reuse of material resources. To return your used device, please use the return and collection systems or contact the retailer where the product was purchased. They can take this product for environmental safe recycling.

Liquid or steam must not be directed towards equipment containing electrical components

- 5.Keep it out of reach of children.When the steam stops this is an indication of low water in tank. .if so,unplug immediately and fill with water.do not use it without water inside.
- 6.When in use ,the outside tank will feel warm.
- 7.Do not fill tank with more than 2 full measuring cups.Use only water, all other chemical solvent such as deodorant,aromatic ,softeners,alcohol or detergent is strictly prohibited.
- 8.Make sure the voltage is compatible and the spare parts are unblocked before using.
- 9.To avoid electric shock ,do not immerse the body and the power cable into water or other liquid .any improper performance of this item occurs ,it should be repaired in the professional service center appointed by the manufacturer .if the power cord is damaged .it must be replaced by the manufacture or its service agent or a similarly qualified person in order to avoid a hazard.
- 10.Do not open the item during use .
- 11.Do not use in swimming pool containing water.
- 12.Please pour away the reaming water after use,refill every time with fresh water



Warning:danger of scalding

Spare parts

- 1.safety lid
- 2.steam button
- 3.Body
- 4.power indicator
- 5.Base
- 6.Garment steamer
- 7.window brush
- 8.straight nozzle
- 9.measuring cup
- 10.Pipe
- 11.Groom
- 12.Rubber
- 13.Garment steamer brush
- 14.round brush
- 15.bent nozzle
- 16.Pad
- 17.Cloth hanger
- 18.Pole
- 19.Garment steamer pad



SAFETY GUIDELINES

is for indoor domestic use only. Any commercial use will void warranty. It is designed for sanitizing and cleaning an array of surfaces such as windows, ceramic tile, carpet, grout and more.

Safety Instructions:

WARNING: BE SURE TO READ AND FOLLOW ALL SAFETY INSTRUCTIONS BEFORE USING YOUR STEAMER. PROPER CARE AND MAINTENANCE WILL HELP TO EXPAND THE LIFE OF YOUR STEAMER.

When using an electrical appliance, basic precautions should always be followed. To reduce the risk of fire, electric shock, or injury: Be sure to unplug the electrical cord when appliance is not in use and while servicing. Do not leave the steamer unattended while young children, pets or infirm persons are around. Children should be supervised and cautioned that the steamer is not a toy and should not be played with. Do not direct steam towards people, pets, electrical appliances, or electrical outlets. Do not immerse the steamer in water or other liquids. Do not handle steamer with wet hands. Do not pull power cord to disconnect appliance from socket or use cord as a handle. Be sure to keep cord away from heat, water, and sharp edges. Do not use if cord or plug is damaged. Do not use extension cords or outlets with inadequate current carrying capacity. Do not use steamer on any steam sensitive material such as velvet, leather, wax polished furniture or floors, synthetic and other delicate fabrics. Do not use on unsealed hardwood floors. By doing so, you may remove the sheen from the steam. It is recommended to test an isolated area with the steam mop before proceeding. As a precaution, you should check the manual made by the floor manufacturer for proper care instructions. Never put cleaning detergents or chemicals into the steamer as it will make the product unsafe and damage the unit. Use only manufacturer's recommended accessories. Stop using steamer if circuit breaker activates. Beware of risk of shock. Wear proper shoes when operating your steamer. Open-toed shoes, slippers or bare feet may cause you to slip and fall or cause hot steam on your feet. Allow your steamer to cool down before storing in a cool, dry place. Pure Clean Handheld Steam Birdie.

READ CAREFULLY BEFORE ASSEMBY AND USE.

THIS PRODUCT IS INTENDED FOR HOUSEHOLD USE ONLY!

Usage

- 1.Fill the tank with water(please refer to how to fill the tank with water)
- 2.Install desired accessories: choose the suitable parts according to your need (please refer to "how to assemble and use the spare parts")
- 3.Connecting with the power supply, the light indicator is on.
- 4.Use after 4 minutes warm up time. Please note not to press the button for this time.

Time is needed for the steam pressure to rise. The unit functions better if you press the button sporadically and not continuously. Also, do not be concerned if the pressure drops after continual usage.

- 5.The steam pressure will restore quickly and become strong again in less than 10 seconds.

After installing the Garment Steamer plug it then it will steam in a few minutes . Hang the clothes on the rack, use the steamer and the glove the iron your clothes vertically.

NOTE

When you change the function from steam cleaner to garment steamer, make sure to unplug it first ,and then release the steam completely by pressing the button. Cool it down for a few seconds the open the safety lid slowly. When you change the function from garment steamer to steam cleaner, just unplug it and Cool it down for a few seconds first before disconnecting any accessories.

How to fill the body with water

1. When using it for the first time ,please unscrew the safety-lid, then pour 1 1/4 measuring cups of water into the body with Measuring cup &Funnel

(Pay attention :just 10 oz. of water can be filled at max)

- 2.When water should be refilled . press the button to the release the steam completely. Unscrew the safety-lid slowly and then operate it according to the same way mentioned above. (Pay attention :the steam button must be pressed until the safety lid is opened.)

How to assemble and use proper accessories

1. Straight Nozzle:

Press the button on the link and put the nozzle on to the link, it is attached properly if the button sets correctly in the hole of the Straight Nozzle.

- 2.Round brush and bent nozzle:

These spare parts can be applied to the straight nozzle or the link . It can be used for cleaning small areas such as the nook and the corner of the wall ,balcony,window,stairs and sofa etc.

- 3.Window brush,pad,rubber and groom:

The window brush can be applied to the hexagonal end.there is a long slot in the window brush in which the pad,groom and rubber can be inserted for cleaning large areas such as glass,floor,furniture,sofa and Hi-Fi in the car. In addition,the groom can be used for dry-cleaning fabrics.

- 4.Garment steamer:

Put the body in the stand then lock it .

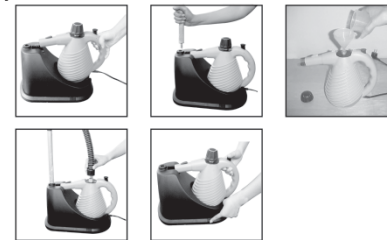
Set the pole to a suitable a height to your clothes .

Screw the hose of the garment steamer to the tank .

The garment steamer can be placed on the clothes rack.

After usage ,the tank can be unlocked by pressing the button on the stand.

- 5.While connecting the hose and window brush ,first insert then turn the direction of "→"symbol.



Caution:

Rated voltage:AC110V-120V Rated Frequency: 60Hz rated power: 900W 10 oz

- 1.Please be sure that main power is turned off after using and before cleaning.
- 2.Put the tank on a flat surface and the tank, spare parts,power cable should not be placed near the heating element.
- 3.When not in use, unplug .Do not change accessories or spare parts while hot, only after the spare parts cool down.
- 4.When in use, do not unscrew the safety-lid or aim it at human being , animals&electrical appliances.