

**PYLE**<sup>®</sup>  
PyleUSA.com



**Questions or Comments?**  
**We are here to help!**  
Phone: 1.718.535.1800  
PyleUSA.com/ContactUs



**PYLE**<sup>®</sup>  
PyleUSA.com



***PSUFM1035A***  
**1000 Watt Disco Jam Powered**  
**Two-Way Bluetooth Speaker System**

***USER GUIDE***

**READ ALL INSTRUCTIONS CAREFULLY BEFORE USING THIS PRODUCT.  
RETAIN THIS OWNER'S MANUAL FOR FUTURE REFERENCE.**

### **Features:**

- Bluetooth Wireless Streaming Audio Compatible for iPhones, Androids, Tablets, PC, etc.
- Dual 10" Woofer and Two 3" Piezo Tweeters
- USB Flash and SD Memory Card Readers with FM Radio
- USB Charging Port for Smart Phones and Other Devices
- Display Screen Shows Number of Songs, Play Time, and FM Radio Frequency
- RCA Output for Connecting to Passive Speakers (Matches with Model PSUFM1030P)
- Three Flashing DJ Lights With On/Off and Gain Control
- Two 1/4" Microphone Inputs
- 3.5mm AUX Line Input with Cable (Compatible With All MP3 Players and Devices With Headphone Outputs)
- RCA Stereo Input And Output
- 7 Band EQ With EQ ON/OFF Control
- 1000 Watts Peak / 500 Watt RMS Power @ 40hm
- Speaker Output Clips For Optional Passive Speaker
- Sensitivity (1w/1m): 90dB
- All 1/4" TS/unbalanced with 3.5mm TRS Stereo jack
- Ported Enclosure for Added Bass Response
- Built In Crossover Network
- Frequency Response: 20Hz-20kHz
- Crossover Frequency: 3.2kHz
- Woofer Magnet Weight: 25 Oz
- 35mm Speaker Stand Mount
- Portable Speaker System with Carrying Handles
- Battery Operated Remote Control: Requires (2) x 'AAA' Batteries, Not Included
- Input Voltage: 110/220V
- Dimensions: 36.8"H X 15.2"W X 13.6"D

### **California Prop 65 Warning**



**WARNING:**  
This product may expose you to chemicals, which is known to the state of California to cause cancer, birth defects and other reproductive harm. Do not ingest.

For more info go to: [www.P65warnings.ca.gov](http://www.P65warnings.ca.gov)

### **FCC INFORMATION**

**WARNING:** Changes or modifications not expressly approved by the party responsible for compliance could void the user's authority to operate the equipment.

**NOTE:** This equipment has been tested and found to comply with the limits for a Class B digital device, pursuant to Part 15 of the FCC Rules. These limits are designed to provide reasonable protection against harmful interference in a residential installation. This unit generates, uses, and can radiate radio frequency energy, and if not installed and used in accordance with the instructions, may cause harmful interference to radio communications. However, there is no guarantee that interference will not occur in a particular installation. If this equipment does cause harmful interference to radio or television reception, which can be determined by turning the equipment off and on, the user is encouraged to try and correct the interference by one or more of the following measures:

- Reorient or relocate the receiving antenna.
- Increase the separation between the equipment and receiver.
- Connect the equipment to an outlet on a circuit different from that to which the receiver is connected.
- Consult the dealer or an experienced radio/TV technician for help.

**This device complies with Part 15 of the FCC Rules. Operation is subject to the following two conditions:**

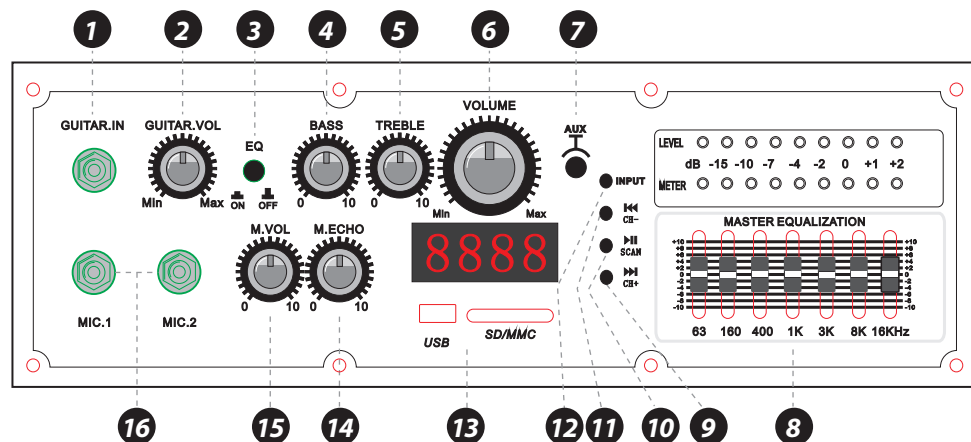
1. This device may not cause harmful interference.
2. This device must accept any interference received, including interference that may cause undesired operation.

### **SAFETY NOTES**

1. Ensure the correct power supply is used to operate this unit properly.  
Do not use any other power sources, cords, or methods.
2. Carefully handle, plug, and unplug the power cable.  
Always grip the plug firmly when plugging or unplugging it from sockets.
3. Do not open the chassis! It is extremely dangerous. Do not insert your hands inside the chassis. If the device malfunctions, do not attempt to repair it.  
Unplug the unit and contact Pyle immediately.
4. Do not use volatile or dangerous chemical cleaners on the unit (e.g., toluene, alcohol, gasoline, etc.). Use only gentle cleaners.
5. Keep the unit in a well-ventilated environment and away from direct sunlight to prevent overheating.
6. Avoid exposing the unit to moisture or rain.

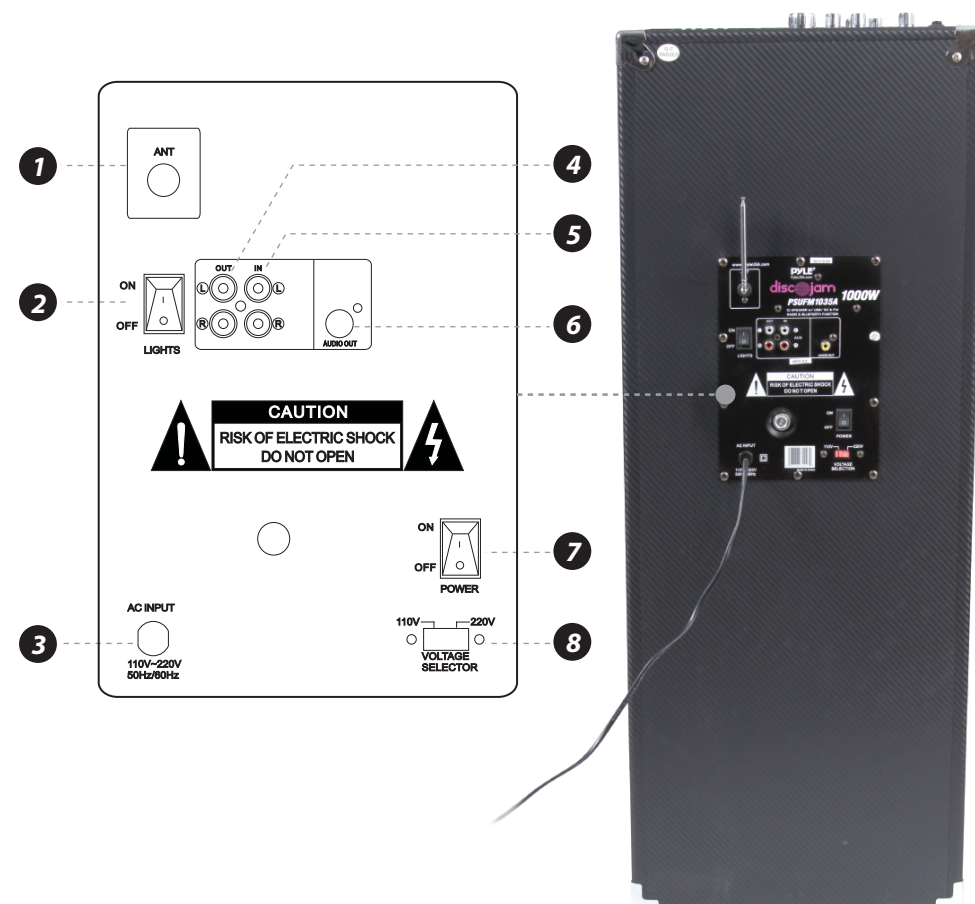
## OPERATING CONTROLS - SYSTEM LAYOUT

1. Guitar Input Jack
2. Guitar Volume Control
3. EQ Switch
4. Bass Control
5. Treble Control
6. Volume Control
7. Line-In/Aux Audio Input
8. EQ Control
9. Next Control
10. Play/Pause Control
11. Previous Control
12. Mode Control
13. USB/SD Jack
14. Echo Control
15. Mic Volume Control
16. Mic Input Jack
17. Metal Corners
18. Flashing DJ Lights
19. Tweeters
20. Speaker Handle
21. Woofer Speaker
22. Vent Hole
23. Woofer Enclosure
24. Speaker Feet

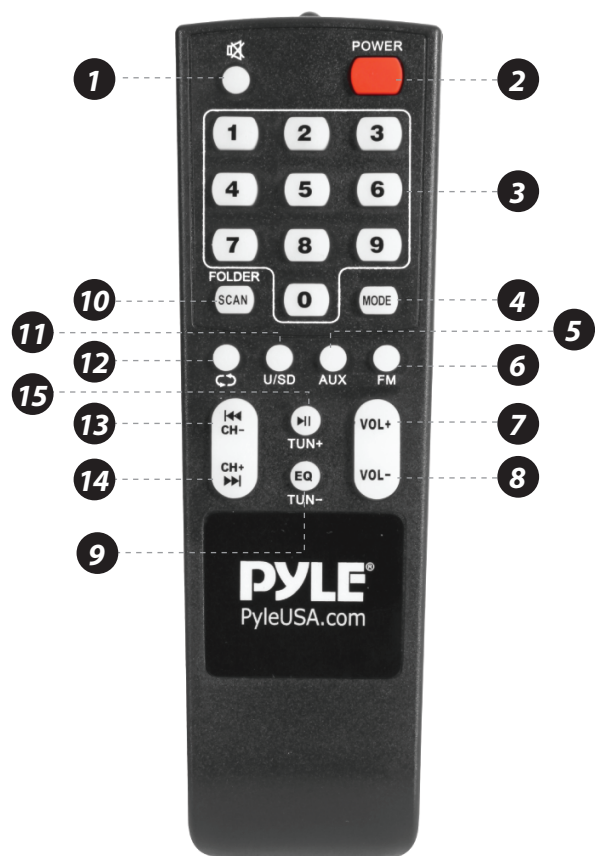


## Speaker Board Schematic

1. FM Antenna
2. Lights Switch
3. AC Power Supply
4. Line-Out/Aux Audio Output
5. Line-In/Aux Audio Input
6. Vice-Box Power Output
7. Power Switch
8. Voltage Selector Switch



## Remote Control Diagram



- |                          |                        |
|--------------------------|------------------------|
| 1. Mute Switch           | 9. EQ Control          |
| 2. Power Button          | 10. FM Scan            |
| 3. Numeric Buttons (0-9) | 11. USB/SD Selector    |
| 4. Mode Control          | 12. Repeat Control     |
| 5. AUX Input Selector    | 13. Previous Control   |
| 6. FM Selector           | 14. Next Control       |
| 7. Volume Up (VOL+)      | 15. Play/Pause Control |
| 8. Volume Down (VOL-)    |                        |

## Cleaning, Maintenance, and Storage Guide

### Cleaning

- Unplug the unit before cleaning.
- Use a dry, soft cloth to gently wipe down the exterior surfaces.
- For more stubborn dirt, lightly dampen the cloth with water.  
Avoid using any harsh chemicals or abrasive cleaners.
- Ensure all ports and vents are free from dust or debris to maintain optimal performance.

### Maintenance

- Regularly check the power cord and plugs for any signs of wear or damage.  
Replace immediately if any issues are found.
- Keep the unit away from moisture and ensure it's used in a dry, well-ventilated environment.
- Periodically inspect the speaker's casing and handles to ensure no parts are loose or damaged.

### Storage

- When not in use, store the speaker in a cool, dry place, away from direct sunlight and moisture.
- Use the original packaging or a protective cover to avoid dust accumulation.
- Disconnect all cables before storing to prevent accidental damage.

### Register Product

Thank you for choosing PyleUSA. By registering your product, you ensure that you receive the full benefits of our exclusive warranty and personalized customer support. Complete the form to access expert support and to keep your PyleUSA purchase in perfect condition.

### Start Here



Model Number:  
**PSUFM1035A**  
[PyleUSA.com/pages/register](https://www.pyleusa.com/pages/register)