

PYLE

PyleUSA.com



PUCVC38

Vacuum

User Manual

*Pure Clean**

IMPORTANT SAFE GUARDS

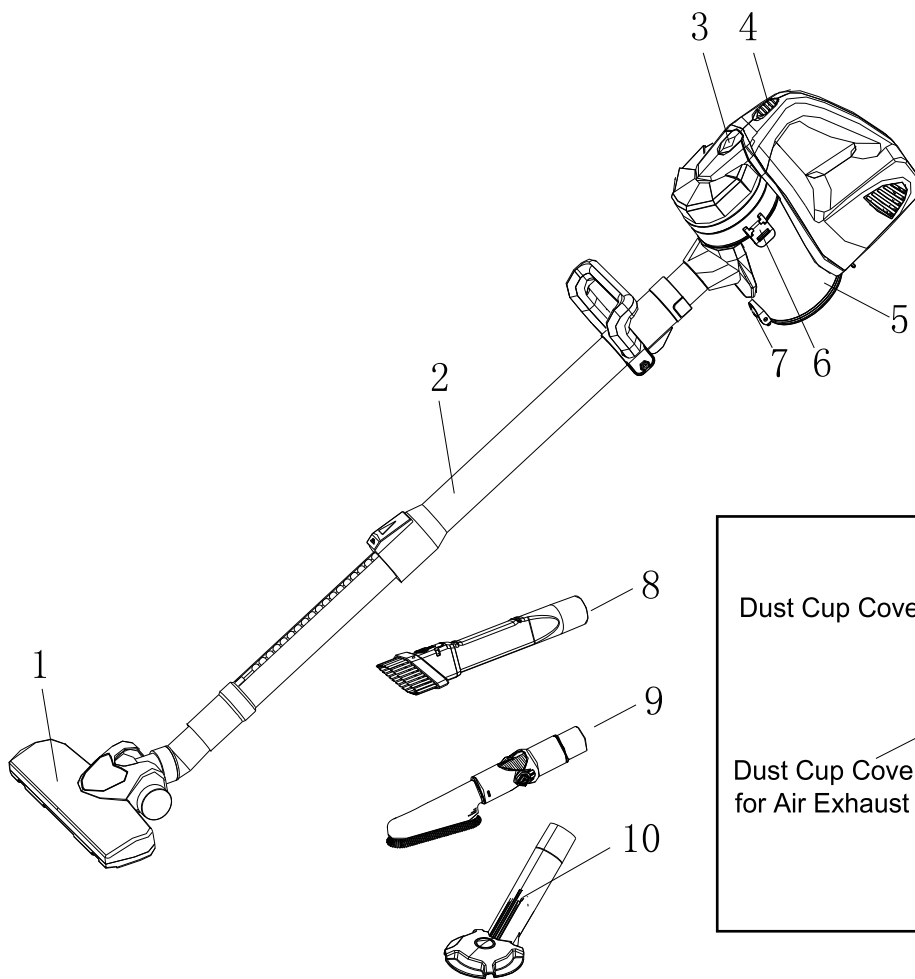
When using an electrical appliance, basic safety precautions should be observed, including following:

READ ALL INSTRUCTIONS BEFORE USING YOUR VACUUM CLEANER

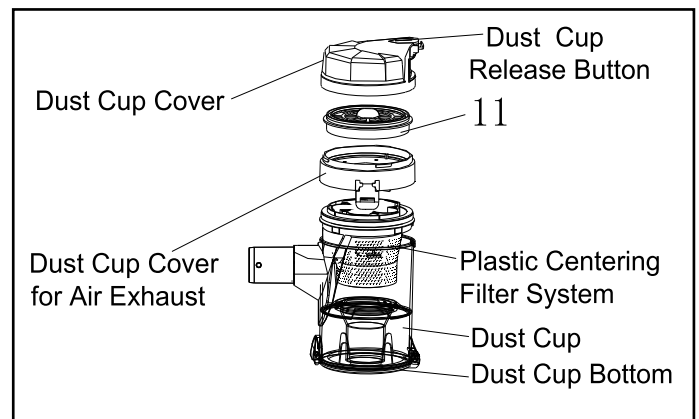
Warning: To reduce the risk of fire, electrical shock, or injury

1. Do not leave appliance when plugged in. Unplug from outlet when not in use.
2. Do not use outdoors or on wet surfaces.
3. Do not allow to be used as a toy. Close attention is necessary when used by or near children.
4. Use only as described in this manual. Use only manufacturer's recommended attachments.
5. Do not use with damaged cord or plug. Do not use vacuum if it has been dropped, damaged, left outdoors, or dropped in water. Return it to an authorized service center.
6. Do not pull or carry by cord, use cord as a handle, or pull cord around sharp edges or corners.
7. Do not run appliance over cord. Keep cord away from heated surfaces.
8. Do not unplug by pulling on cord. To unplug, grasp the plug, not the cord.
9. Do not handle plug or appliance with wet hands.
10. Do not put any object into openings. Do not use with any opening blocked; keep free of dust, lint, hair and anything that may reduce air flow.
11. Keep hair, loose clothing, fingers, and all parts of body away from openings and moving parts.
12. Do not pick up anything that is burning or smoking, such as cigarettes, matches, or ashes.
13. Turn off the control before unplugging.
14. Use extra care when cleaning stairs.
15. Do not use to pick up flammable or combustible liquids such as gasoline or use in areas where they may be present.
16. Look on your vacuum and follow all label and marking instructions.
17. Keep end of hose, wands and other openings away from your face and body.
18. Do not use the vacuum cleaner without dust cup filter in place.
19. Always unplug this appliance before connecting or disconnecting vacuum hose.
20. Store the vacuum indoors. Put the vacuum away after use to prevent tripping accidents.
21. Using improper voltage may result in damage to the motor and possible injury to the user.
Correct voltage is listed on the rating label.
22. Use only on dry, indoor surfaces.
23. Do not use in any purpose other than described in this user's guide.
24. If the supply cord is damaged, it must be replaced by the manufacturer, its service agent or similarly qualified persons in order to avoid a hazard..

VACUUM CLEANER PUCVC38



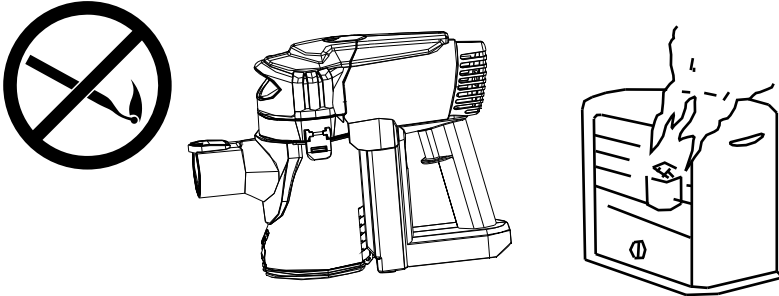
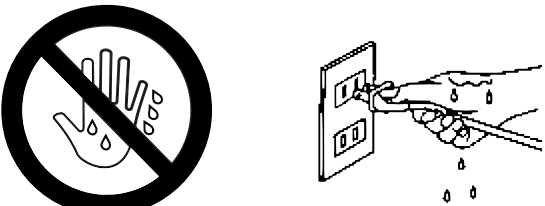
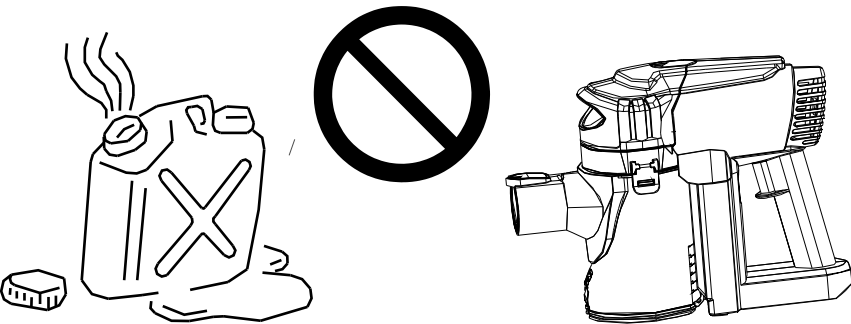
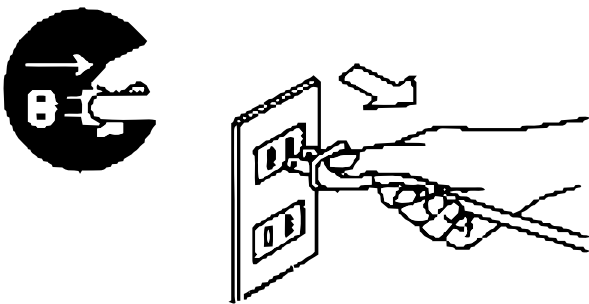
Dust Cup Set



1. MAIN FLOOR BRUSH
2. EXTENSION TUBE
3. DUST TANK LOCK
4. POWER SWITCH
5. DUST TANK
6. DUST TANK UPPER PART RELEASE BUTTON
7. DUST TANK BOTTOM RELEASE BUTTON
8. MULTI CREVICE BRUSH
9. UNIVERSAL MULTI BRUSH
10. PET BRUSH

PRECAUTIONARY MEASURES

If the opening that suck in the air, the brush or extension tubes are blocked, you should switch off the vacuum cleaner at once. First clear the blocked substance before you attempt to start the vacuum cleaner again.

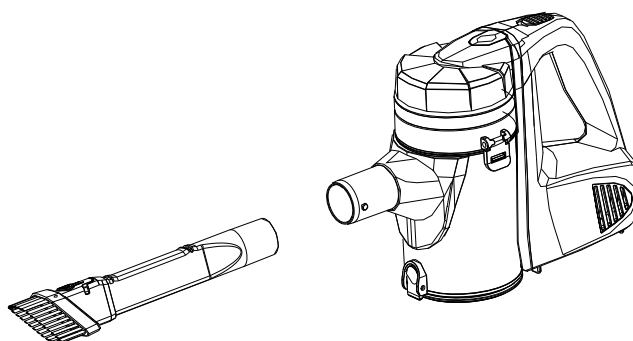
<p>1. Do not operate the vacuum cleaner too close to heaters like radiators, cigarette butts etc.</p>	
<p>2. Before you insert the plug into the wall contact, make sure your hand is dry.</p>	
<p>3. Before you start using the vacuum cleaner, please remove large or sharp objects from the floor in order to prevent damage to the filters. Do not use the vacuum to clean anything that can easily burn, such as gas and cigarettes.</p>	
<p>4. When you want to pull the plug from the wall contact, please pull the plug by itself and not by the electrical cable.</p>	

ASSEMBLING VACUUM CLEANER

Always remove the plug from the power socket before fitting or removing accessories!

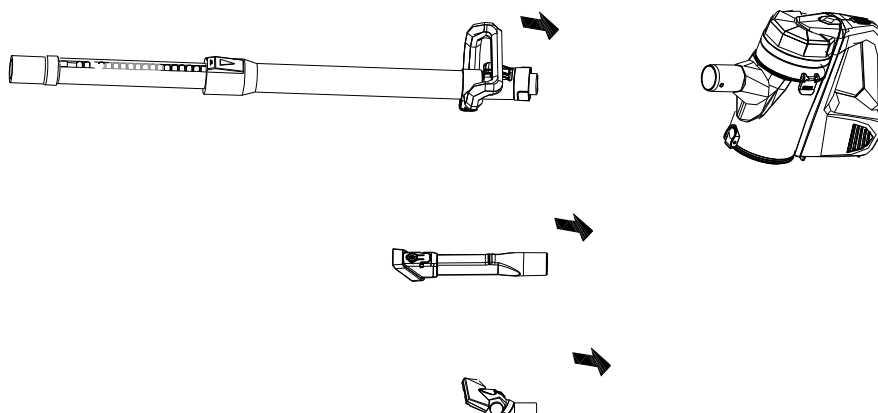
1. Fitting the vacuum cleaner

Install the brush to the body before using the vacuum.
Attach the brush properly to the body.



2. Extension tube

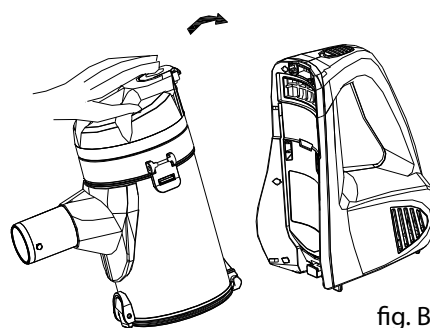
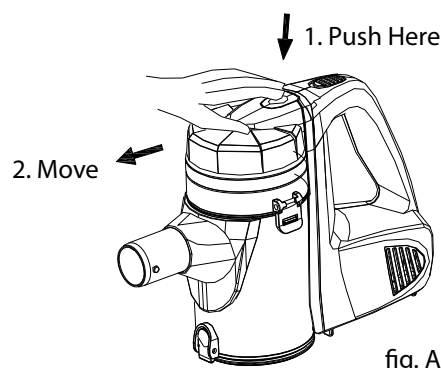
You can use the extension tubes to connect the sucking mouth of the machine directly with the floor brush.
Connect the Multi brush(2 in 1) to the sucking mouth of the machine to clean furnitures, TV, shelves,etc.



3. Remove and install the dust cup

(a) **Remove dust cup from body:** push the release button of dust cup. Then take out the dust cup from body. (fig. A)

(b) **Install dust cup on body:** make the underside of dust cup to connect with the body. (pls pay attention to the fitting position and direction). Then push the dust cup to close the body. The dust cup will be locked after a voice of "kata".(fig.B).



CLEANING THE APPLIANCE

A. How to drop dust and clean the dust cup

1. Remove the dust cup from body.
2. Press the dust cup bottom release button, then the dust will fall down automatically. (fig. A)
3. If the plastic filter system is too dirty, please press the dust cup cover (for air exhaust) release button, take out the filter assembly out of the dust cup, then you can clean them with soft brush or wash them with water. You should dry them completely before you use it again. (fig. B).

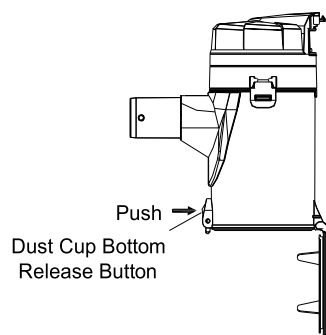


fig.A

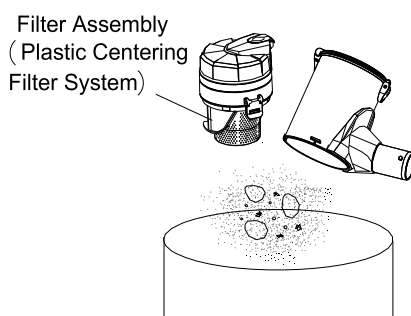


fig.B

B. Changing or cleaning the sponge and HEPA filter

1. Remove the dust cup from body.
2. Rotate the dust cup cover counter-clockwise from "close" to "open", take out the dust cup cover. Draw out the sponge and HEPA filter set. (fig. A)
3. Pull up the knob of the filter frame, and pull out the sponge filter and HEPA filter from the case box. Clean the Sponge and HEPA filter by soft brush or rinse it in lukewarm water and dry them completely before using again. All the filters are washable. (we recommend you to clean the filters when the suction power becoming weak.) (fig. B)

Note: The above filters should be equipped in correct places when the vacuum machine is working.

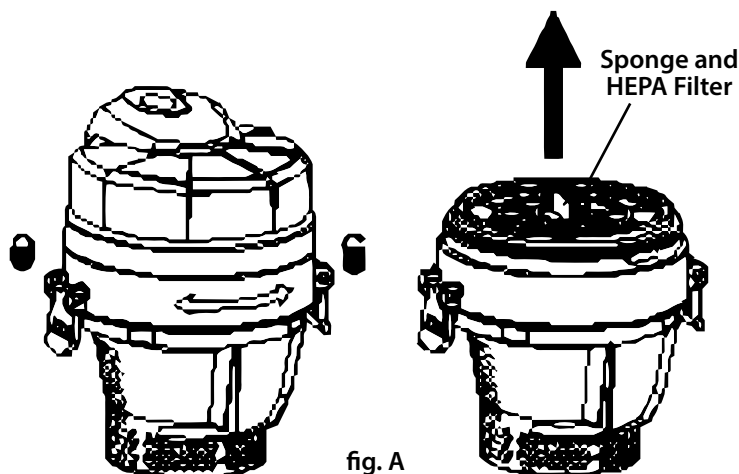


fig. A

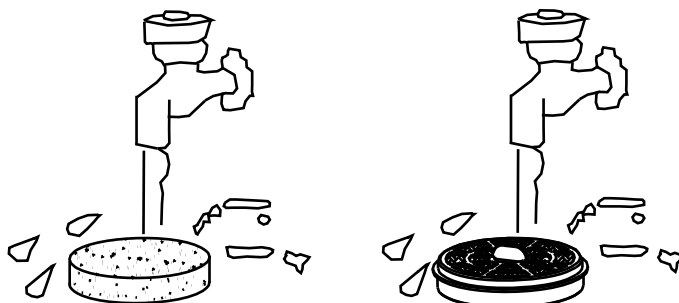


fig. B

TROUBLESHOOTING GUIDE

PROBLEM	POSSIBLE REASON	POSSIBLE SOLUTION
Hand Vacuum won't operate	<ol style="list-style-type: none"> 1. No power in electrical outlet supplying the transformer. 2. The unit needs to be serviced 	<ol style="list-style-type: none"> 1. Check the fuse or breaker and replace them.
Hand Vacuum won't pick up or suction power is weak	<ol style="list-style-type: none"> 1. The DUST CUP may be full 2. Dust cup filter needs cleaning 	<ol style="list-style-type: none"> 1. Empty dust cup (see page 7). 2. Connect the charger.
Dust escaping from hand vacuum	<ol style="list-style-type: none"> 1. Dust cup is full. 2. The dust filter dust cup and cup bottom may not be attached properly 3. Puncture/hole in dust cup filter 	<ol style="list-style-type: none"> 1. Empty the dust cup 2. Review dust cup filter instructions 3. Replace dust cup filter
Hand Vacuum brush won't pickup	<ol style="list-style-type: none"> 1. Dust cup is full. 	<ol style="list-style-type: none"> 1. Empty and clean dust cup container.



VISIT US ONLINE:

Have a question?

Need service or repair?

Want to leave a comment?

PyleUSA.com/ContactUs

PYLE