



VISIT US ONLINE:
Have a question?
Need service or repair?
Want to leave a comment?
PyleUSA.com/ContactUs

PYLE

Questions? Issues?

We are here to help!

Phone: (1) 718-535-1800

Email: support@pyleusa.com

PYLEPRO

PyleUSA.com



PWMA1299A

12" Portable Wireless BT Streaming PA Speaker System

Built-in Rechargeable Battery, Wireless Microphone,
USB/Micro SD/FM, 80 Watt

USER GUIDE

WARNING

This device complies with Part 15 of the FCC Rules. Operation is subject to the following two conditions: (1) this device may not cause harmful interference, and (2) this device must accept any interference received, including interference that may cause undesired operation.

Changes or modifications not expressly approved by the party responsible for compliance could void the user's authority to operate the equipment.

NOTE:

This equipment has been tested and found to comply with the limits for a Class B digital device, pursuant to Part 15 of the FCC Rules. These limits are designed to provide reasonable protection against harmful interference in a residential installation. This equipment generates, uses and can radiate radio frequency energy and, if not installed and used in accordance with the instructions, may cause harmful interference to radio communications. However, there is no guarantee that interference will not occur in a particular installation.

If this equipment does cause harmful interference to radio or television reception which can be determined by turning the equipment off and on, the user is encouraged to try to correct the interference by one or more of the following measures:

- Reorient or relocate the receiving antenna.
Increase the separation between the equipment and receiver
- Connect the equipment into an outlet on a circuit different from that to which the receiver is connected.
- Consult the dealer or an experienced radio/TV technician for help

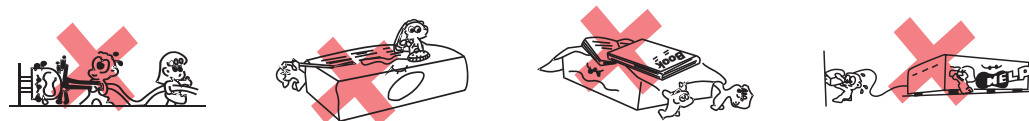
NOTE: This device and its antenna(s) must not be co-located or operation in conjunction with any other antenna or transmitter.

RF Exposure Statement

To maintain compliance with FCC's RF Exposure guidelines. This equipment should be installed and operated with minimum distance of 20cm the radiator your body. This device and its antenna(s) must not be co-located or operation in conjunction with any other antenna or transmitter.

IMPORTANT SAFETY MEASURES

Before using this machine, please read all the safety and operating instructions. Meanwhile, please observe all the indications about safe operating.



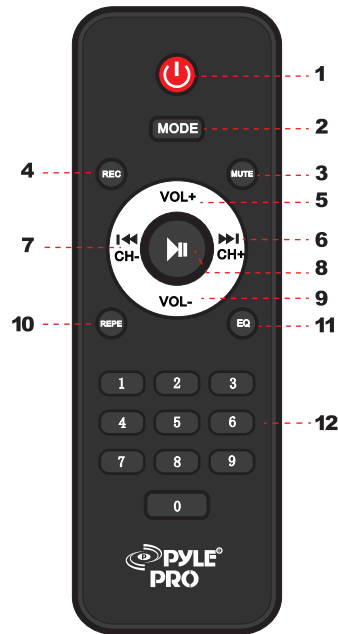
1. **Protection of electric power supply line:** Be aware that the electric power supply line is not tramped, pressed by heavy objects. Pay special attention to the plug of power supply line and outlet on the machine. **DO NOT** lengthen the electric shock, **DO NOT** pull or drag or the power supply line.
2. **Ventilation:** This set must be put in ventilated place. **DO NOT** put disk on it or cloth to cover it. The distance away from the wall should not be less than 10 centimeters. **DO NOT** put this set on the bed, sofa, carpet or other objects with similar surface in case of good ventilation.
3. **Casing Dismantling:** **DO NOT** dismantle the casing. If one touches the inner components, he will probably get serious electric shock.
4. **Unusual smell:** When you discover unusual smell and smoke, cut power supplies immediately and pulls out the plus from the outlet on the wall. Contact the sell shop or nearest repairing center.

PRODUCT FEATURES

- Compact, Portable & Powerful PA Speaker System
- Karaoke Microphone Talk-Over Mode
- Wireless BT Audio Streaming
- Built-in Rechargeable Battery
- FM Radio with Digital LED Display
- USB Flash & Micro SD Memory Card Readers
- MP3 Digital Audio File Compatibility
- Audio Recording Function
- 1/4" Microphone Input
- Aux (3.5mm) Input Jack
- Connect & Stream Audio From External Devices
- Full Range Stereo Sound Reproduction
- Impressive Bass Response
- Echo, Bass, Volume Adjustment
- Convenient Carry Handle & Rolling Wheels
- *Optionally Powered via External Device, 12V Connectors
- Rugged & Heavy Duty Design

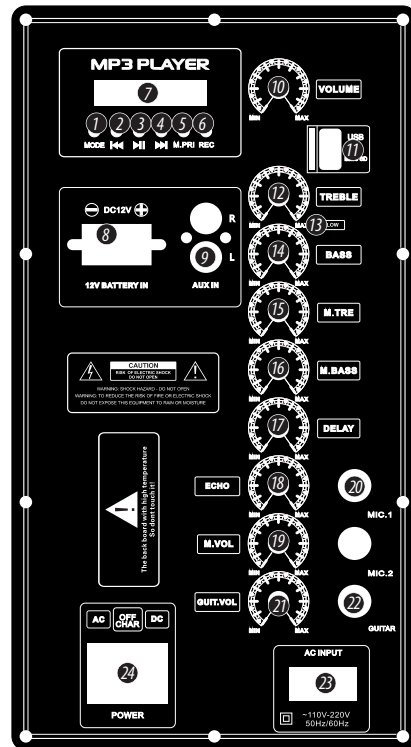
REMOTE CONTROL FUNCTIONS

- Power:** Standby button.
- MODE:** Used to switch the BT, FM, AUX, USB, SD
- MUTE:** Mute button
- REC:** Recording, press once to start recording, press again to play the current recording.
- VOL +:** Main volume increase
- ▶▶:** Next song/Next channel
- ◀◀:** Previous song/Previous channel
- ▶||:** Play/Stop Auto-search by press and hold the FM button, press and hold the BT button to turn on TWS
- VOL -:** Main volume decrease
- REPEAT:** Single repeat/repeat all
- EQ:** Choose from EQ1, EQ2, EQ3, EQ4...
- Choose song number/channel directly.



UNIT DESCRIPTION

- | | |
|------------------|-----------------|
| 1. MODE | 20. MIC. IN 1/2 |
| 2. ◀◀ | 21. GUIT.VOL |
| 3. ▶ /TWS | 22. GUTAR |
| 4. ▶▶ | 23. POWER |
| 5. M.PRI | |
| 6. REC | |
| 7. Display | |
| 8. DC 12V IN | |
| 9. AUX IN | |
| 10. VOLUME | |
| 11. Micro SD/USB | |
| 12. TREBLE | |
| 13. LOW | |
| 14. BASS | |
| 15. M. TRE | |
| 16. M. BASS | |
| 17. DELAY | |
| 18. ECHO | |
| 19. MIC.VOL | |



GETTING STARTED

- Ensure the Portable PA Speaker is turned off. Ensure all volume controls are turned all the way down. Next, connect one side of the included power cable to the Portable PA Speaker's power inlet and the other to a grounded power outlet.
- Ensure that the power supply complies with the power requirements listed on the identification sticker located on the bottom of your product. Turn on the power to the Portable PA Speaker using the power switch.
- Slowly turn up the function keys until the desired level is reached.

WIRELESS BT CONNECTION

Switch the Portable PA Speaker to **MODE**, then switch to **BT** (BT MODE) pairing mode and connect to a new BT device using BT Network Name: 'PYLE PRO'.

Warning: To prevent the risk of fire or electric shock, do not expose this appliance to rain or moisture. To prevent electric shock do not remove the cover. No user serviceable parts inside. Refer servicing to qualified service personnel.

Safety: Prior to connecting mains, ensure that the supply voltage is correct and the mains lead is in good condition. Avoid ingress of water or particles into the enclosure.

Placement: Keep the unit out of direct sunlight and away from heat sources. Place the unit in an upright position during use and storage. Keep the unit away from moisture or dusty environments.

Cleaning: Use a soft cloth with a neutral detergent to clean the cabinet, panel and controls. To avoid damage, do not use solvents to clean this equipment.

WHAT'S IN THE BOX:

- Portable PA Speaker
- (2) Wireless Handheld Microphone
- Power Cable
- Remote Control
- User manual
- Warranty Card

California Prop 65 Warning

⚠ WARNING:

This product contains Nickel carbonate which is known to the state of California to cause cancer birth defects and other reproductive harm. Do not ingest.

For more info go to: www.P65warnings.ca.gov