



PWPBT67

In-Wall Bluetooth Audio Receiver

PYLE
PyleUSA.com

USER GUIDE

Features:

- In-Wall Audio Control Receiver
- Wall Plate Style Music Control Design
- Bluetooth for Wireless Audio Streaming Ability
- Includes (2) Wall Plates (Bluetooth Audio Source & Audio Output)
- U.S. Standard Electrical Single Gang Box Size
- Direct Connect & Stream Audio from External Devices
- Aux (3.5mm) Audio Input Connector Jack
- RCA (L/R) Audio Output Connector Jacks
- Dual USB Device Charge Ports
- Adjustable Rotary Volume Knob
- Convenient Front Panel Touch Button Controls (Play/Pause, Previous/Next, BT Pairing)
- Used for Home Theater, Office & Business Audio Applications
- Optional Speaker System Connection via RJ-45/Network Ethernet Jack
- Requires Connection to External Amplifier / Receiver / Speaker System
- Decorative Wall Plate Frame Cover Not Included



What's in the Box:

- Source Control Wall Plate
- Audio Output Wall Plate
- Wall Power Adapter

Technical Specs:

- Bluetooth Version 4.0, A2DP
- Compatible with All of Today's Latest Devices (Smartphone, Tablet, Laptop, Computer, etc.)
- Wireless Audio Range: Up to 50'+ ft.
- Optional Audio Connection via RJ45 Cable
- USB Power: (2) DC 5V Ports
- Power Supply: 15V Power Adapter

WARNING:

Changes or modifications not expressly approved by the party responsible for compliance could void the user's authority to operate the equipment.

NOTE: This equipment has been tested and found to comply with the limits for a Class B digital device, pursuant to Part 15 of the FCC Rules. These limits are designed to provide reasonable protection against harmful interference in a residential installation. This unit generates, uses, and can radiate radio frequency energy, and if not installed and used in accordance with the instructions, may cause harmful interference to radio communications. However, there is no guarantee that interference will not occur in a particular installation. If this equipment does cause harmful interference to radio or television reception, which can be determined by turning the equipment off and on, the user is encouraged to try and correct the interference by one or more of the following measures:

- Reorient or relocate the receiving antenna.
- Increase the separation between the equipment and receiver.
- Connect the equipment to an outlet on a circuit different from that to which the receiver is connected.
- Consult the dealer or an experienced radio/TV technician for help.

This device complies with Part 15 of the FCC Rules. Operation is subject to the following two conditions:

1. This device may not cause harmful interference.
2. This device must accept any interference received, including interference that may cause undesired operation.

Power Supply:

After installation, connect the DC 18V wall power adapter to turn on the unit.

The LED light on the Bluetooth audio source will start blinking blue, indicating that the unit is ready to pair with your Bluetooth-enabled device. The light will keep blinking until the unit is paired successfully.

Important Note:

If the unit does not connect to a Bluetooth device within 2 minutes, it will automatically turn off.

To try pairing again, reconnect the DC power adapter.

Operation & Control

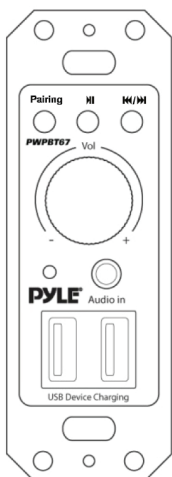
When scanning for Bluetooth devices, look for the model number 'PWPBT67' to identify this unit.

Once paired, the blue LED light will stay solid, indicating that the unit is ready to transmit audio to your connected amplified system.

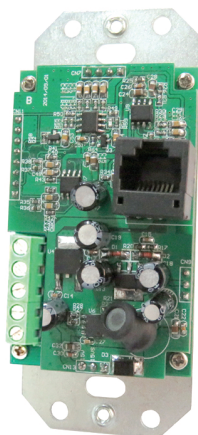
- Use the Play/Pause, Forward, and Reverse buttons on the unit to control audio playback.
- The rotary knob adjusts the volume and also turns the unit ON and OFF.
 - Turn the knob until you hear a 'click' to turn the unit ON or OFF.
 - Avoid using too much force when turning the knob.

Use the RCA (L/R) jacks on the wall plate to connect the system to speakers. For other devices, use the 3.5mm aux input to stream audio through the connected speakers.

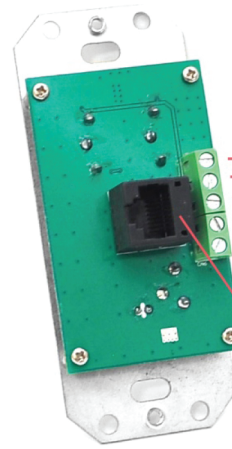
Bluetooth Audio Source



Power +18V
GND/-12V
Vref
R-Line out
L-Line Out

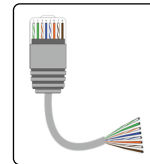
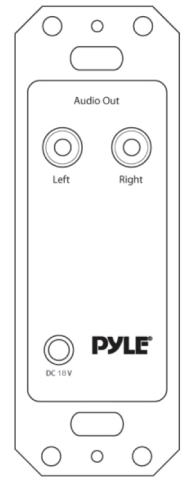


Audio Output



Power +18V
GND/-12V
Vref
R-Line out
L-Line Out

RJ45



*Optional RJ45 Connection

White / Green	R_out
Green	L_out
White / Orange	+18V
Blue	SGND
White / Blue	+18V
Orange	GND
White / Brown	GND
Brown	Verf

Use straight cable to connect the system. Don't use crossover cable.

California Prop 65 Warning

WARNING:

This product may expose you to chemicals, which is known to the state of California to cause cancer, birth defects and other reproductive harm. Do not ingest.

For more info go to: www.P65warnings.ca.gov

Register Product

Thank you for choosing PyleUSA.

By registering your product, you ensure that you receive the full benefits of our exclusive warranty and personalized customer support. Complete the form to access expert support and to keep your PyleUSA purchase in perfect condition.

Start Here



Model Number:
PWPBT67
PyleUSA.com/pages/register



Questions or Comments?

We are here to help!

Phone: 1.718.535.1800

PyleUSA.com/ContactUs