

# PWPLGU204

## USB Charging Power Outlet Snap-On Cover

Snap-On USB Wall Power Outlet Frame Plate  
Smart USB Charging Outlet Cover with Device Holder

This USB wall plate is the easiest way to add USB Fast-Charging capability to 15 Amp standard decor electrical outlets in a home or business. For 20Amp outlets, contact the dealer for alternate units.

Simply replace an existing single decor wall plate with the Charger and enjoy easy device charging that's always ready to go.

The wall plate connects to a 15 amp standard decor outlet and provides 2 USB charging ports without using up either outlet electrical socket.

Please follow these directions carefully to safely install this product.

### ⚠ CAUTION

It is critical to confirm that power has been shut off from the fuse panel or circuit breaker box to the designated outlet before starting the replacement. Replacement of electrical system wall plates cannot be done safely unless power has been disconnected at the breaker panel or fuse panel for the property. Test the outlet, with a voltage meter capable of making the proper readings prior to the installation of the wall plate, to ensure power has been disconnected.

You need to prepare a flat head screwdriver for this installation.

### INSTALLATION

Installing this wall plate takes just 3 simple steps:

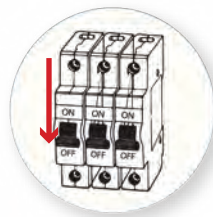
#### 1. TURN OFF THE POWER

Locate the electrical cutoff point (breaker panel, fuse panel, etc.) for the outlet to be used. Turn off the breaker switch or remove the fuse.

**Hint** - It may help to plug in a lamp or similar device to the outlet and turn it on. When you have found the correct breaker or fuse, the light will go out. Additionally test the outlet with a voltage meter capable of making the proper

readings prior to the installation of the wall plate to ensure power has been disconnected.

1

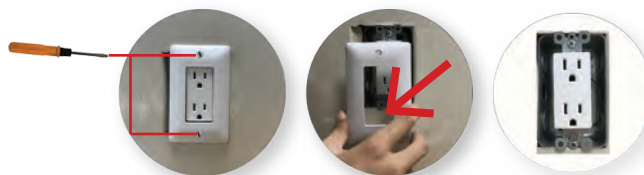


⚠ Do not remove the outlet's wall plate until you are certain that the outlet is not live. Exposed, live 120 volt AC devices such as wall outlets and light switches can cause severe injury, even death.

#### 2. REMOVE THE EXISTING FACE PLATE COVER

Using a flat head screwdriver, remove the existing wall plate. The screw is located above and bottom of the wall socket. Turn the screwdriver counter-clockwise to remove the screw.

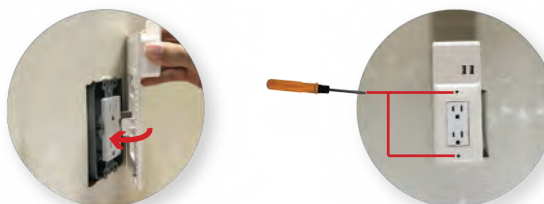
2



#### 3. INSTALL USB WALL PLATE CHARGER

Line up the Decor outlet hole in the USB wall plate over the socket of the exposed outlet and press the wall plate on to the outlet. Ensure the 2 metal contacts on the back of the wall plate are aligned with the metal costal contacts on the sides of the wall electrical outlet. Install the top and the bottom screws provided with the wall plate, to attach the wall plate to the outlet. Turn the screwdriver clockwise to tighten the walk plate firmly against the wall.

3



Restart power to the outlet after confirming that the installation is correct!

Congratulation! You already finished the installation and now just start to charge.

### CLEANING

Clean the charger with a soft, dry cloth. If a mild detergents needed to clean tougher spots, shut off the outlet from the fuse panel or circuit braker box and make sure that no moisture gets inside the USB ports or outlet on the front of the unit.



### SUPPORT

If you have any questions or concerns which are not addressed in this document, please contact **PyleUSA** tech suupport. Do not attempt to troubleshoot any electrical outlet without proper training.



#### VISIT US ONLINE:

Have a question?

Need service or repair?

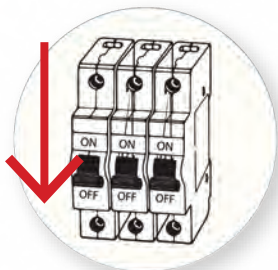
Want to leave a comment?

[PyleUSA.com/ContactUs](http://PyleUSA.com/ContactUs)

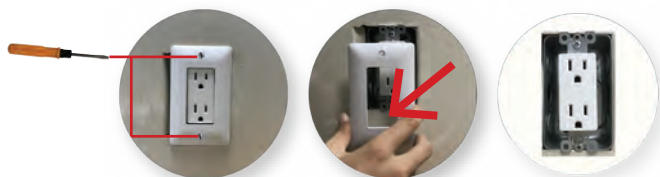
**PYLE**

## CORRECT INSTALLATION STEPS

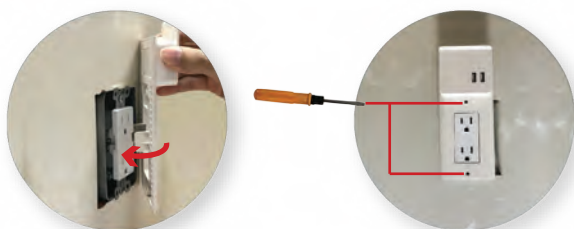
### 1 Turn off the power



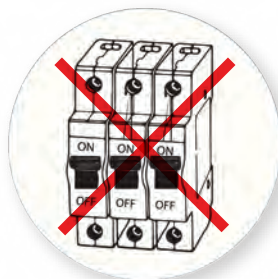
### 2 Remove the existing face plate cover



### 3 Install the new panel and tightened it



## WRONG INSTALLATION ACTION



1. Forget to turn off the switch



2. Take off the power socket from the wall



3. Finger dig into the wall socket directly



4. Wrong direction for the holder



5. Two hands insert hardly



### PWPLGU204

#### USB Charging Power Outlet Snap-On Cover

Snap-On USB Wall Power Outlet Frame Plate - Smart USB Charging Outlet Cover with Device Holder

#### Features:

- Instantly Add Dual USB Charging Ports to Existing Outlets
- Universal Duplex Size Wall Plate Frame Cover
- Quick & Hassle-Free 'Snap-On' & 'Screw-In' Installation
- Convenient Smartphone / Device Holder
- Instant USB Fast Charge Ability
- Energy Efficient Design
- Clean Installation with Modern Style
- Works with All of Today's Latest Devices
- Integrated Charging LED Indicator Light
- Reliable, Safety Certified & Lab Tested
- Fireproof, Environmentally Friendly Construction
- Ideal for Home, Office and Business Use

#### What's in the Box:

- USB Wall Plate Frame
- Installation Screws

#### Technical Specifications:

- Duplex Outlet Size/Type: Fits Universal Standard 1-Gang (Single Gang) Square Style Outlets
- Fast-Charge Support: 15 Amp Standard Electrical Outlets
- USB Port Power Output: 2.1A (x2)
- Construction Material: 94V0 Fire-proof Plastic
- \*Duplex Receptacle Not Included
- Power Output: 5V, 3.1A - MAX
- Power Supply: 100-240V, AC
- Dimension (L x W x H): 6.88" x 2.95" x 1.27" -inches
- Sold as: 1