

INSTRUCTION MANUAL



Universal Waterproof iPod, MP3 Player & Smartphone Portable Speaker Case



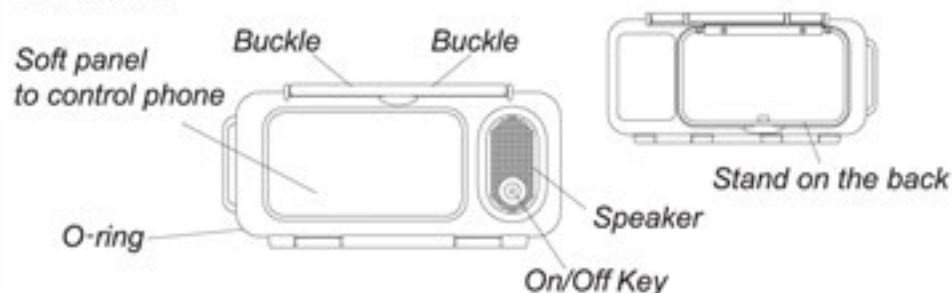
PWPS63BK
PWPS63WT
PWPS63BL

Main Functions

*Waterproof housing is designed to enhance your mobile phone, iPhone, iPod, MP3/MP4 experience, allowing you to listen to music in damp, humid, and wet environments

- !** **Waterproof performance:**
The waterproof level of this product complies with IP47 standards and is designed to ensure normal operation in water at specified conditions.

Quick Start



Safety Instruction

- Before storing unit away for extended periods of time, remove the batteries.
- Avoid using the product for long periods in hot temperatures to prevent damage to O-ring.
- Make sure casing is dry before opening, removing, or accessing mobile device
- Different types of batteries or new and used batteries are not to be mixed.
- Insert batteries following the correct polarity;
- Remove depleted batteries right away
- Do not short-circuit the supply terminals.
- Internal dimensions of unit: 2.4(W) x 4.56(H) x .43(D)in

Specification

Volume control :	Use your device / phone
Power supply :	3 X 1.5V AAA batteries

Care and Maintenance

- Wipe the interior of the unit with a soft dry cloth. Don't wash the interior with water.
 - Don't use oil or chemicals on oring, as will cause corrosion.
 - Take out all batteries if you do not use it for long time.
 - Recommend using Alkaline batteries for longer playing time.
 - Make sure no hair, dust, fibers, sand, other particles around O-ring before closing & using it.
 - The stainless steel on back is used as a stand, please don't pull more than 45° angle.
 - When you feel the sound aliasing or lower, please turn off the speaker volume, and turn on again after 5-10 seconds.
 - Please do not press the soft panel without mobile phone inside the case.
- Caution: This item is not recommended to be used under high water pressure directly.

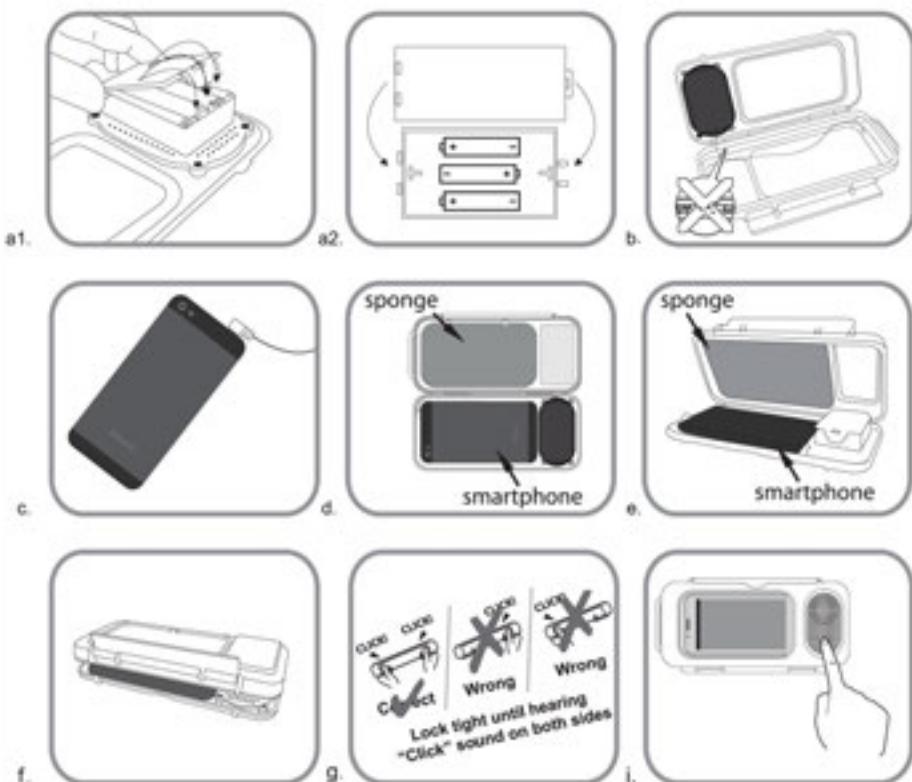
Operation Guide:

- Open the battery door, follow the polarity indicated for installing new alkaline batteries (recommended).
- Check the O-ring placement, make sure no hairs, fibers, sand or other particles that effecting the splash proof performance.

- (c) Connect the 3.5mm jack with smartphone (noted: ensure the 3.5mm jack is fully plugged into the smartphone when using the phone case)
- (d) Place the screen of smartphone on the soft panel (Figure d).
- (e) Because of different thickness of smartphones, use sponge to adjust the fitness.
- (f) Close the main case (Figure f).
- (g) Press down and lock the case until you hear a 'click' sound on both sides (figure g).
- (h) Please double-check that the speaker case is completely closed before operating the unit in any wet environment.
- (i) Press the on/off button for speaker.
- (j) ** Never open/ close speaker case in wet place.
- (k) Select a song from your smartphone and adjust the volume using your device
- (l) To make a call pick up incoming call and turn off the speaker function of the waterproof case. To hear clearly, it is suggested to turn on the speaker of your Smartphone to talk.

Important:

After making this purchase, check if there is any damage to its surface. Then perform the waterproof test. Put some paper or fabric into the speaker case, shake or press it in the water. If you find that the paper or fabric is wet, set up an exchange. Once the test is finished and the unit is shown to be working, we are not responsible for any future damages caused by user error or mistakes.



**Please be careful to ensure the 3.5mm jack is placed out of the way when closing the case.

Correct



Incorrect



DISPOSAL ONLY
THROUGH APPROVED
OUTLETS ?



Waterproof Wireless Stereo Speaker with Microphone

FCC User Manual Requirement

Warning: Changes or modifications to this unit not expressly approved by the party responsible for compliance could void the user authority to operate the equipment.

NOTE: This equipment has been tested and found to comply with the limits for a Class B digital device, pursuant to Part 15 of the FCC Rules. These limits are designed to provide reasonable protection against harmful interference in a residential installation. This equipment generates, uses and can radiate radio frequency energy and, if not installed and used in accordance with the instructions, may cause harmful interference to radio communications.

However, there is no guarantee that interference will not occur in a particular installation. If this equipment does cause harmful interference to radio or television reception, which can be determined by turning the equipment off and on, the user is encouraged to try to correct the interference by one or more of the following measures:

- Reorient or relocate the receiving antenna.
- Increase the separation between the equipment and receiver.
- Connect the equipment into an outlet on a circuit different from that to which the receiver is connected.
- Consult the dealer or an experienced radio/TV technician for help.