

SereneLife



FOOT MASSAGER
SLFTMSG20

USER'S MANUAL

Thank you very much for buying **SereneLife** Shiatsu Foot Massager!

Before using, please read this user manual carefully and use it correctly.

- Please keep this user's manual in shape for future references.
- This product was designed for general household purposes, as well as using it outside your house (e.g. commercial, business, etc.)

Please consult the shop sales pr product related advisory window for any inquiries about the product.

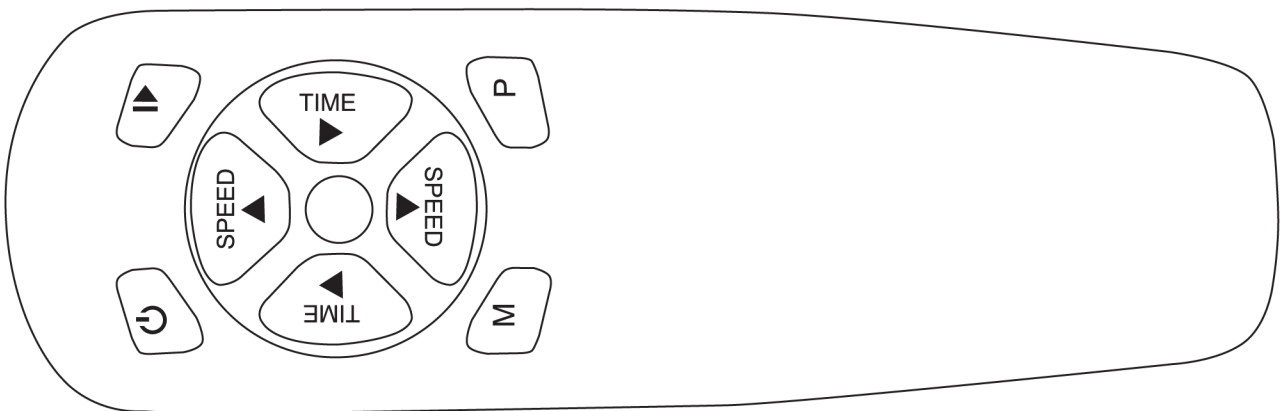
Warranty

1. Possible breakdown of the product is covered by the warranty, we provide full repair for FREE.
2. If product is damaged or been defective upon purchase, you may contact the nearest point of after sale.
3. Natural damage that results of its operation. Note: Non-consumable damage parts are not covered by the warranty.
4. Cases that needs compensation for maintenance or due to improper operation that results fault damages.
5. Damage due to Fire, Natural disasters, Abnormal voltage caused by failure, damage due to product has been repaired.
6. Warranty is void in cases of Personal damage, mis-handled or lost, repaired by other technicians not affiliated with SereneLife.
7. Warranty only covers within the home country.

Maintenance Card

Product Name:		Distributor (Maintenance Point)
Model No.:		
Customer Name:		
Address:		
Tel.:		
Purchase Date:		Guarantee date: one-year after buying

Remote Control Function



Function Of Remote Controller

Power Button: Press this button to turn-OFF the control system. (The power is still ON, only by soft-off control system), if button is pressed again it will automatically turn-ON.

Start/Stop: Press this button to Start/Stop the operation. Note: Make sure that the machine is plugged

Time- : Time decrease: the default working time is 10 minutes, divided into 10 levels, press this button to decrease time.

Speed+ : Speed Increase: Manual 1-20. Press this button to increase the speed when the machine is operating.

Time+ : Time increase: the default working time is 10 minutes, divided into 10 levels, press this button to increase time.

Speed- : Speed decrease: Manual 1-20. Press this button to decrease the speed when the machine is operating.

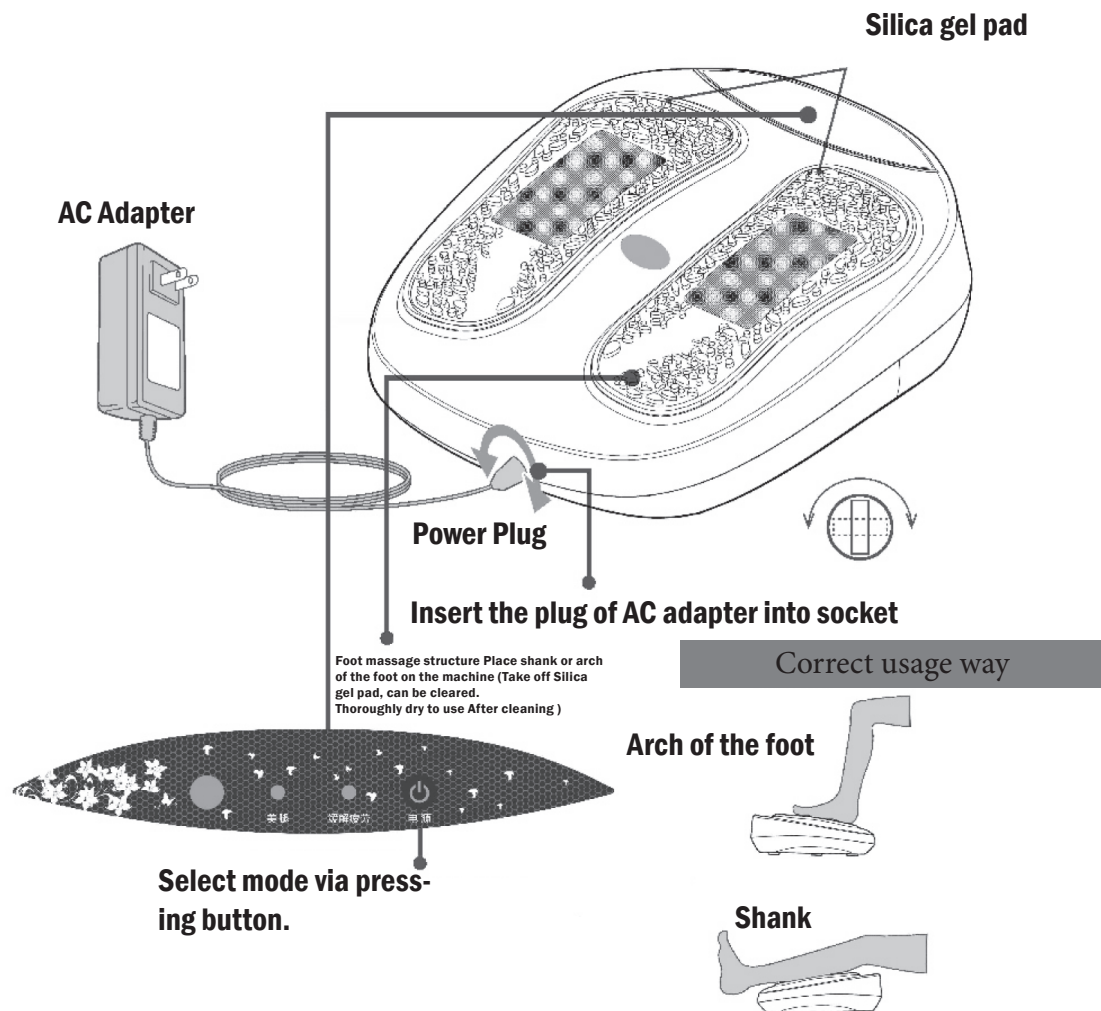
M: QUICK BUTTON for Levels 16 10 6, press once for Level 16 and twice for Level 10 and 3 times for Level 6 repeatedly.

Auto/Mode: Auto / Mode: Default to manual mode, automatic mode is activated once you press this button. Press the button repeatedly to cycle through the 'P1' P2' P3'', automatic operating mode or '88' manual mode. Auto mode, humanized programming, automatically adjusting the vibration frequency. In automatic mode, speed and time is not adjustable. In the manual mode. On standby, the time can be adjusted but the speed is not adjustable. When operating, speed is adjustable, but time is not adjustable.

Note: The effective reception range of the remote control signal is within 2.5 meters, the infrared emission indicator of the controller should be aligned the infrared receiving window on the product..

Parts Names-Methods Of Use

1. Plug the AC adapter into the socket.
2. The main body is connected with the plug, left or right turn 90 degrees to fix.
3. According to the preferences, choose "legs mode" to "relieve fatigue model". After the model is selected, the model indicator light is on.
4. After using, pull the AC adapter out of the socket.



Leg slimming mode: Fast swing leg, easy fat calf muscle relaxation flick.

Relieve fatigue mode: Let the heel swing up and down, the whole foot will shake. This relieves the ankle's surrounding muscles.

Safety And Caution

Please read carefully before using the security aspects of the note, and the correct use. The user manual records is a important content to prevent the user from harm or damage or other people, for the purpose of safety and proper using please fully understand the following content, to comply with the records.

Force

Even if there is no specific disease, the elderly or the weak persons should also consult a doctor before using the machine.

The friction may hurt the skin, so do not use directly.

- When use, if user feels any pain or abnormality, please discontinue using the machine and immediately consult a doctor.
- Connect the plug properly and avoid attaching any form of sharp objects, water or waste that will lead the user to electric shock or short circuit the machine as well as causing fire.
- Use the machine on a flat ground. If use in a not flat surface, user may overturned that will result to a accident. Do not run the machine without load.

Any form of abnormal activity of the machine please stop using as soon as possible. To avoid electric shock, prevent fire, short circuit, etc. Please keep the machine a safe area.

Warning!

- Do not use a transformer.
- Make sure to not plug the power cord to a damage socket, that will lead to electric shock, short circuit of the machine, as well as fire damage.
- Do not use the power cord outdoor, that will cause damage to the accessory.
- Make sure to wrap the cord properly and keep the machine out-of-children and pets.
- Do not use the machine with two(2) persons at the same time
- When there is a thunderbolt or thunderwave experienced during using the machine, please turn-off and pull-out the power cord on the socket. This will avoid the machine to not-work properly as well as avoiding physical damage together with the machine.
- Pull out the power cable on the power outlet when there is a power outage in your area.
- Do not repair the machine by yourself and make sure to contact the right technician to fix the machine.

The machine is specifically design for foot massage, avoid using any parts of your body when using this product. In addition, do not reverse the direction of usage of the product to avoid accident. Contact the nearest technician.

Features:

- Increase Blood Flow & Circulation
- Relaxes & Relieves Muscle Pain
- Used for Toes, Feet, Heel & Calf Massaging
- Twin Oscillating Penetrating Motors
- Comfortable Silica Gel Foot Pads
- Foot Pads are Removable & Washable
- Simple Plug-in Operation
- Digital Touch Buttons with LED Display
- Speed & Timer Adjustable Settings
- High-Powered Massage Motors
- Includes Remote Control

Technical Specs:

- High-Powered Massage Motors: 30 Watt
- Power Cable Length: 3.6' ft.
- Power: 110/240V, with adapter
- Dimensions (L x W x H): 14.3" x 15.5" x 4.9"

SereneLife

