

**SLMAQLGHD99**

## **Female Mannequin Long Hand**

Heavy Duty Jewelry Display Holder  
Bracelet Necklace Ring Stand (White)

serenelife™

**USER GUIDE**

### **Features:**

- Extended Long Dummy Female Mannequin Hand
- Lightweight Jewelry Long Hand Holder Stand
- Display Rings & Bracelets in an Elegant Way
- Strong and Sturdy, Color-Resistant, Not Easy to Fade
- Hand can be Stood up to Offer a Three-Dimensional Display
- Suitable to Show Off Jewelries such as Ring, Bracelet, Bangle, Watch, Glove, etc

### **What's in the Box:**

- Hand
- Magnetic Metal Piece

### **Technical Specs:**

- Construction Materials: PP + Metal Base
- Wrist Circumference: 5.5" -inches
- Bottom Circumference: 3" -inches
- Length Size: 6.3" -inches
- Height Size: 18.5" -inches



#### **⚠️ ADULT ASSEMBLY REQUIRED**

Read all instructions before assembly and use.

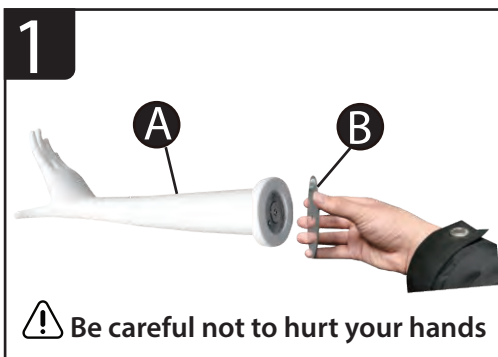
Due to the presence of small parts during assembly,  
keep out of reach of children until assembly is complete.

#### **Questions? Comments?**

We are here to help!

Phone: (1) 718-535-1800

Email: [support@pyleusa.com](mailto:support@pyleusa.com)



**PRODUCT DISPLAY**



**front**



**side**



**back**