



**VISIT US ONLINE:**  
Have a question?  
Need service or repair?  
Want to leave a comment?

[PyleUSA.com/ContactUs](http://PyleUSA.com/ContactUs)

**PYLE**

SereneLife  
by **PYLE**



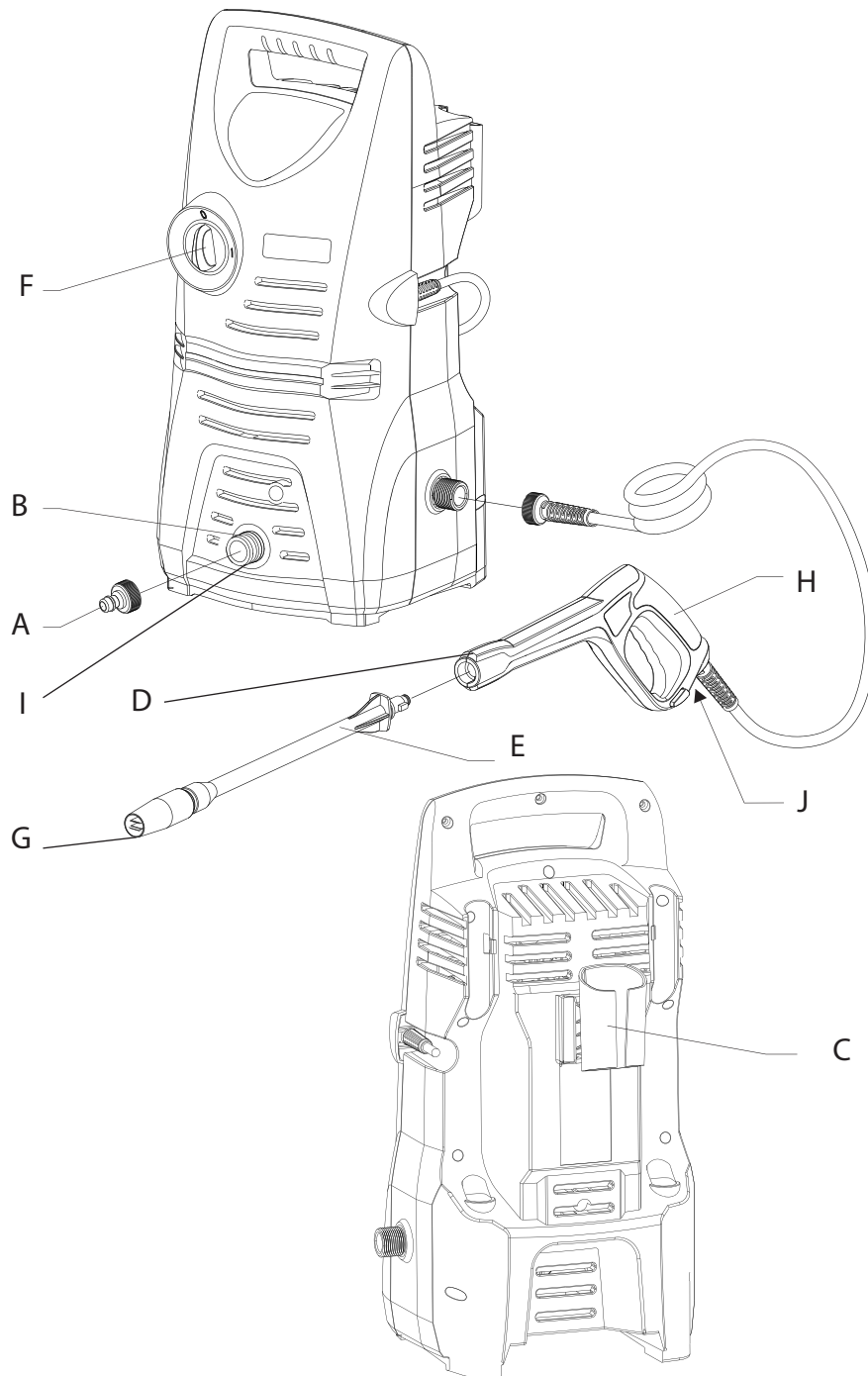
## SLPRWAS23 HIGH PRESSURE WASHER User Manual



**WARNING:** Do not use the appliance before reading the instruction manual



This machine is designed for domestic use only



### Appliance is leaking

Slight leakage from the appliance pump is normal. If the leakage increases contract the authorized customer service.

### Storage

In order to prevent accidents or injuries, keep in mind the weight of the appliance, pull out the telescopic rod (max length 410mm) when selecting a storage location for it.

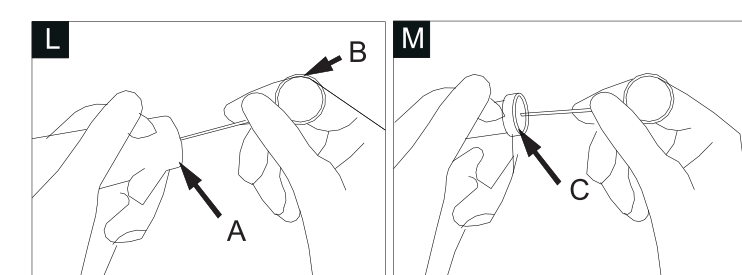
### Storing the appliance

1. Park the machine on an even surface.
2. Press the disconnect on the trigger gun and remove the high pressure hose from the trigger gun.
3. Push the casing of coupling for the high pressure hose toward the rear and disconnect the high pressure hose from the appliance.
4. Insert the trigger gun into the holder.
5. Stow away the mains cable, the high pressure hose and accessories on the appliance.

Prior to extended storage periods, as during the winter, also observe the instructions in the care section.

### Specification

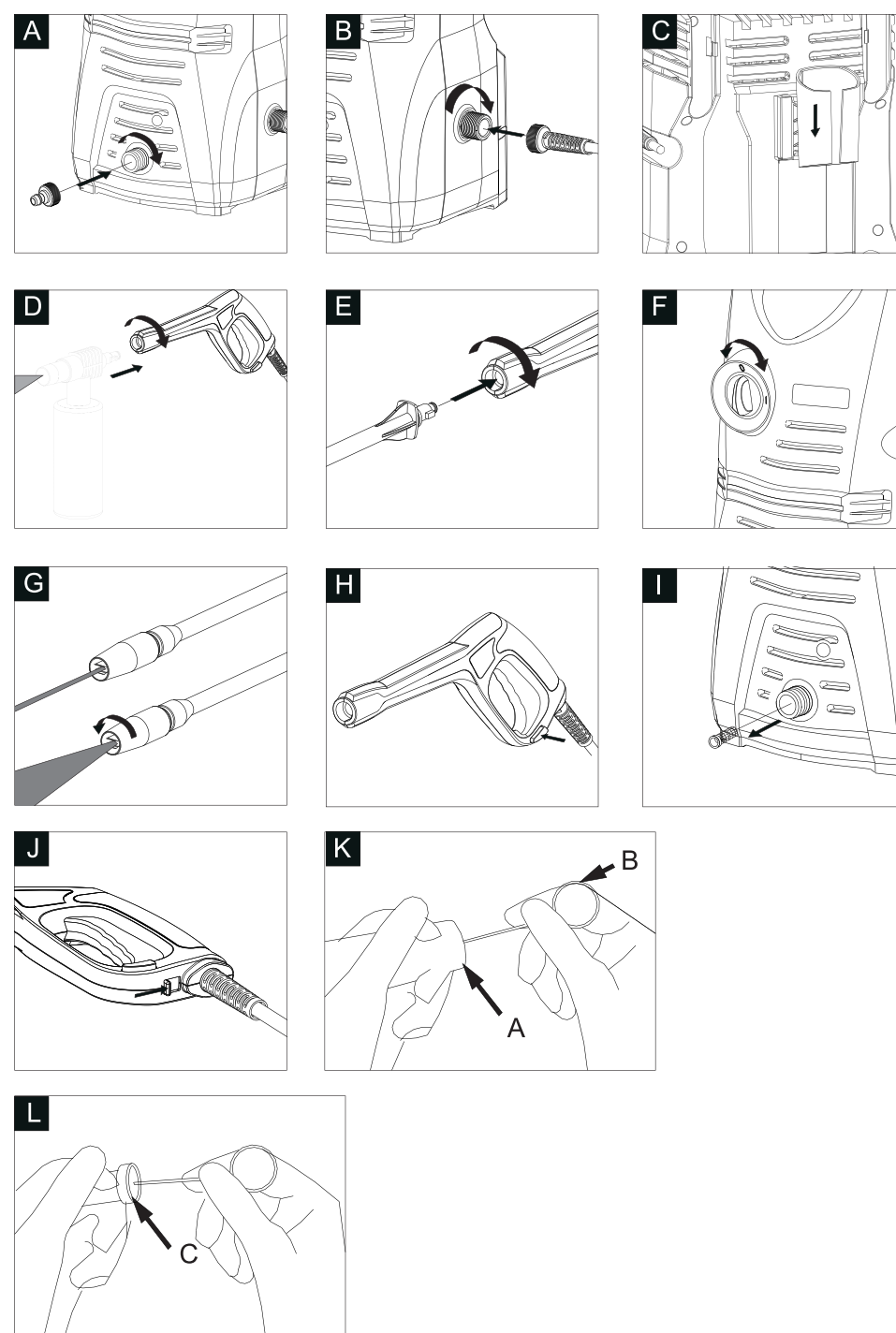
Model No: SLPRWAS23	Environment temperature: 41-122° F
Power Supply: 110V	Weight: 14.35 lbs.
Power: 1200 Watt	Length: 8.5 in
Max pressure: Up to 1160+ psi	Width: 7.6 in
Water Flow: 300L / per Hour (5L/ per Min.)	Height: 17.0 in
Max water pressure: 80bar (8Mpa)	
Working pressure: 6.5Mpa	
Water temperature: 32-140° F	



### Troubleshooting

Symptom	Cause	Recommended action
Machine refused to start	1. Machine not plugged in 2. Defective socket 3. Defective extension cable 4. Incorrect mains voltage 5. Switch off 6. Fuse has blown	1. Plug in machine 2. Try another socket 3. Try another extension cable 4. Check voltage correctly 5. Turn on switch 6. Replace fuse
Pump stop working	Lack of water lead to high temperature	check water flow quantity -put the hose in the 10 bottle (per minute)
Fluctuating pressure	1. Spray lance blocked 2. Pump is sucking air 3. Impurities in pump	1. Clean lance with needle 2. Check that hoses and connections are airtight 3. Contact the dealer
Machine do not reach operation pressure	1. Spray lance blocked or worn 2. Short supply of water 3. Hose kinked 4. Filter blocked 5. Hose blocked	1. Clean or change spray lance 2. Check inlet flow rate 3. Straighten out hose 4. Clean filter 5. Clean hose
Trigger gun can be used	Trigger gun is locked	Unlock trigger gun
Machine often starts and stops by itself	1. Safety valve worn out 2. Pump, high pressure hose, trigger gun is leaking	1. Contact the nearest service center 2. Contact the nearest service center

The content in this instruction manual (include accessories) is kept the final modifying and explanation rights





CONTENTS

Gernerl Information -----	3
Safety Instruction -----	4
Operation -----	5
Illustration -----	6
Maintenance and Care -----	8
Troubleshooting -----	9
Storage -----	10
Specification -----	10
Circuit Diagram -----	11

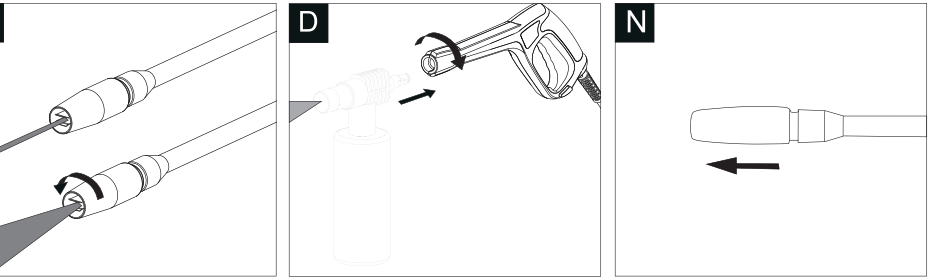
Dear customer,  
Pis read and comply with these original instructions prior to the initial operation of your appliance and store them for later use or subsequent owners.

- General Information**  
⚠️📖 This high pressure washer is designed for domestic use only:
1. To clean cars, motorbikes, caravans, bicycles.
  2. To clean patios, fences, garden walls, pathways, driveways and house facades, particularly useful for cleaning blocked driveway.
  3. To remove algae and moss from roofs, brickwork and guttering.
  4. To clean garden tools and machinery, furniture and barbecues.
  5. To clean hygienic of animal pens and their surrounding area.

With accessories, replacement parts and detergents approved by factory. Observe the instructions provided with these detergents.  
♻️ The packing material can be recycled. Please do not place the packaging into the ordinary refuse for disposal, but arrange for the proper recycling.  
♻️ Old appliances contain valuable materials that can be recycled. Please arrange for the proper recycling of old appliances. Please dispose your old appliances using appropriate collection systems.

**Read symbols in the operating instructions**  
**Danger:** Immediate danger that can cause severe injury or even death.  
**Warning:** possible hazardous situation that could lead to severe injury or even death.  
**Caution:** possible hazardous situation that could lead to mild injury to persons or damage to property.

⚠️🚫 The high pressure washer may not be directed at persons, animals, live electrical equipment or at the appliance itself. Protect the appliance against frost.

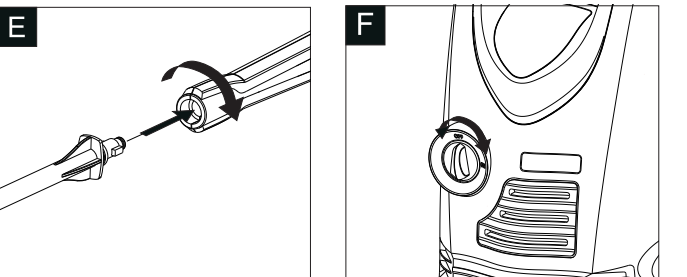


**Caution**  
Prior to cleaning, make sure that the high pressure washer is placed safely on level ground. Wear protective goggles and protective clothing during the cleaning process.  
**Notes:** Release the lever of the trigger gun, the device will switch off again. High pressure washer remains in the system.

**Working with detergent**  
Use detergent when cleaning. Remove the lid from the detergent bottle and press the detergent bottle into detergent (pic D).  
**Notes:** The device is under low pressure when using detergent and pulling out spray lance. Release the lever on the trigger gun, lock the lever on the trigger gun, insert the spray lance into trigger gun when interrupting operation.

**Finish Operation**  
1. Turn off tap.  
2. Press the lever on the trigger gun to release any remaining pressure and water in the system.  
3. Pull out the main plug.  
4. Store the water hose and high pressure hose.

**Maintenance and Care**  
Turn off the appliance and remove the mains plug prior to any care and maintenance work. Prior to longer periods of storage, pull out the filter in the detergent bottle and clean under running water. Pull out the filter in the water connection and clean under running water (pic I). Use the needle to clean the residue (pic L).



4. Install spray lance (pic E). Push the spray lance into the trigger gun and fasten it by turning it through 90 degree.

**Water Supply**  
Impurities in the water can damage the high pressure pump and accessories. All high pressure washer (except hot water system) use the cold water. The suitable water temperature is 41°F to 140°F

**Water supply from mains**  
Observe water supply regulations  
For connection values, use fibre-reinforced water hose (not included) with a standard coupling, normally the length is 5m, connect the water hose to the appliance and water supply.  
1. Open the watertap  
2. Unlock the lever on the trigger gun  
3. Pull on the lever of the trigger gun  
4. Turn on the appliance (pic F ON: open OFF: close)

**Start up**  
Dry runs lasting longer than two minutes lead to damages to the high pressure pump. If the appliance does not build up pressure within two minutes, switch it off and proceed as instructed in the Chapter “Troubleshooting”. The trigger gun is subjected to recoil force when the water washer is discharged. Make sure that you have a firm footing and are also holding the trigger gun and spray lance firmly. The spray lance has two main settings stream and fan for easy cleaning (pic H).

❄️ In winter, please do not put the machine outside without draining the water to avoid the damage to the machine. Just put it in a room with frost prevention.

**Safety instruction**  
**Danger**  
1. Never touch the mains plug and the socket with wet hands.  
2. The appliance must not be used if the power cord or important parts of the appliance, e.g. high pressure hoses, trigger gun or safety devices are damaged.  
*Please arrange for it to be replaced immediately by an authorised repair agent or a skilled electrician.*  
3. The appliance may not be used in areas where a risk of explosion is present.

4. The high pressure washer must not be directed at other persons or directed by the user at him/her self to clean clothing or footwear.  
5. If the appliance is used in hazardous areas (e.g. filling stations) all of the safety provisions and operating instructions detailed in this manual must be observed.  
6. Never use the appliance to clean objects containing hazardous substances.  
7. Vehicle tyres or tyre valves are susceptible to damage from the high pressure washer and may burst. The first indication of this is a discoloration of the tyre. Damaged vehicle tyres/tyre valves are highly dangerous. Ensure that a distance of at least 30 cm is observed when cleaning with the washer.  
8. Risk of explosion. Do not spray flammable liquids. Never draw in fluids containing solvents or undiluted acids. This includes petrol, paint thinner and heating oil. The spray mist thus generated is highly inflammable, explosive and poisonous. Do not use acetone, undiluted acids or solvents as they are damaging to the materials from which the appliance is made.

**Warning**  
1. The mains plug and the coupling of an extension cable must be watertight and must never lay in the water.  
2. Unsuitable extension cables can be hazardous. Only use extension cables outdoors which have been approved for this purpose and labeled with a sufficient cable cross-section: 1-10m: 1.5mm² 10-30m: 2.5mm²  
3. Always fully unroll electrical cables.

4. High pressure hoses, fixtures and couplings are important for the safety of the appliance. Only use high pressure hoses, fixtures and couplings recommended by the manufacturer.
5. This appliance is not intended for use by persons with reduced physical, sensory or mental capabilities. The appliance must not be operated by children or persons who have not been instructed accordingly. Children should be supervised to prevent them from playing with the appliance.
6. The operator must use the appliance correctly. When working with the appliance, he must consider the local conditions and pay due care and attention to other persons, in particular children who are nearby.

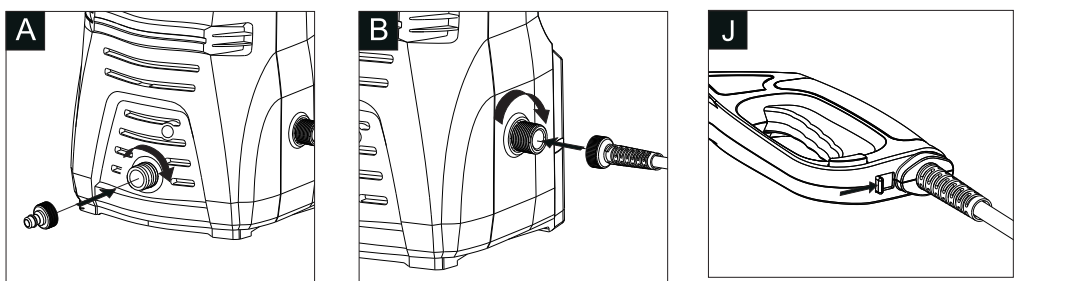
**Caution**  
1. Do not use the machine if the persons nearby do not wear safety protection device.  
2. Wearing protective clothing and safety goggles to protect against splash back containing water or dirt.  
3. Create stability for the appliance prior to all work on or with the appliance to prevent accidents or damage. The stability of the appliance is warranted when it is placed on to an even surface.  
4. For safety reasons, we recommend that you operate the appliance only via an earth-leakage circuit breaker (max. 30mA).  
5. Make sure that the power cord or extension cables are not damaged by running over, pinching, dragging or similar. Protect the power cable from heat, oil, and sharp edges.  
6. Never leave the appliance unattended when it is in operation.

**Operation**  
**Package**  
Please check all accessories before opening the box. If there is something missing, please contact the dealers or sellers.

Illustration	
1. Coupling for water connection	11. Lock of high pressure hose
2. Water inlet	12. Back body
3. Front body	13. Storage of trigger gun
4. On/Off switch	14. Storage of spray lance
5. Power cord	
6. Water outlet	
7. High pressure hose	
8. Trigger gun	
9. Spray lance	
10. Lock trigger gun	

Special accessories expand the possibilities of using your appliance. Please contact the dealer for further information.

**Illustrate accessories before start-up.**  
1. Install coupling for water connection (pic A). Screw the coupling to the water connection on the appliance.  
2. Install high pressure hose (pic B, pic J).



Insert the high pressure hose tightly into the coupling on the appliance, it will lock in audibly.  
**Note:** Make sure the connection nipple is aligned correctly. Check the secure connection by pulling on the high pressure hose.  
3. Install the storage of trigger gun (pic C). Insert the storage of trigger gun and push down all the way.