



serenelifeTM

The image shows a white and grey inflatable bathtub with a bubble massage mat on top. It is connected to a pump and control unit. The brand name 'serenelife' is visible on the side of the tub. The background is a wooden deck.

SLSPAMT26FB

Inflatable Bathtub with Bubble Massage Mat

Comes with a Matching Inflatable Pillow, Cup Holder,
and Remote Control for Body and Spa

USER MANUAL

Features:

- Thick Inflatable Base and Zip Cover
- Featured with Backrest and Armrests Support
- Comes with Inflatable Pillow for Seating or Back Support
- Strong and Durable, Made of PVC Material
- With Convenient Cup Holder
- Designed to Lay on Bathtub Floor
- Connected with Air Hose that Delivers Massaging Bubbles
- Safety Power Function
- Built-in Heater that Creates a Soothing and Warming Experience
- Equipped with Suction Cups for Non-Slip Comfort
- Include Remote Control to Adjust Different Light Colors
- 2 Color-Changing Lights Pipe
- Equipped with Drain Valve for Easy Water Removal
- Modern, Sleek and Comfortable Design
- Easy to Store and Transport when Deflated
- Non-toxic and Environmentally Friendly Materials
- Lightweight and Easy to Use
- User-Friendly Control Panel
- Adjustable Bubble Intensity Levels
- Equipped with Safety System to Prevent Overheating and Accidental Water Leakage

Technical Specs:

- Constructional Material: PVC
- Weight Capacity: 345 lbs.
- Bubble Machine Voltage: 120V
- Remote Control Battery Material: Mercury-Free Button Carp Manganese Battery
- Battery Model: CR2032
- Battery Capacity: 200mAh
- Battery Rated Voltage: 3V
- Inflatable Bathtub Dimensions (L x W x H): 66" x 29.9" x 25.9" -in.
- Bubble Massage Mat Dimensions (L x W): 49.2" x 16.92" -in.

What's in the Box:

- (1) Inflatable Bathtub
- (1) Bubble Machine
- (1) Remote Control
- (1) Plastic Drain



SAFETY PRECAUTIONS AND INSTRUCTIONS

In order to use this product safely and avoid personal injury or property damage to you or others, please observe the following precautions

PRECAUTIONS

1. The indoor environment where this machine is used must be equipped with leakage protection device and use qualified power socket.
2. The elderly and children under the age of 13 should use this product under the care of their parents. The following people or those with the following conditions should not use this product: (within 30 minutes after meal, excessive hunger, severe physical failure, severe water shortage, high fever, massive blood loss, hypertension, heart disease, suppurative ulcer, new wound, drunkenness, unconsciousness, menstruation and pregnancy).
3. When using, ensure that the bathtub bubble machine is placed on the plane, and keep a certain distance from the water source. It is strictly prohibited to use it in places with high humidity.
4. After use, unplug the power plug immediately and remove the connection with the bath bucket to avoid the danger of the water in the bath bucket flowing back into the machine.
5. When the machine power cord is damaged or other parts of the machine fail, cut off the power supply in time, contact the dealer and return it to the manufacturer's professional for repair. Do not repair or modify the bathtub bubble machine by yourself.

BATHTUB INSTRUCTIONS

1. In colder areas, please soak it in warm water for a while before first use, and then open it for installation after the material becomes soft. Direct opening may damage the bathtub.
2. Please clean the product with warm water for the first time. Do not use corrosive cleaning agents.
3. When injecting water, please inject cold water first and then hot water, or adjust the hot water to the water temperature suitable for bathing and inject it directly. The maximum water level shall not exceed one-half according to personal needs.
4. When filling the bathtub with water, do not touch the hot water above 50°C/122°F, so as not to cause the air bag to bulge.
5. Infants and children should wear a special collar when using it and use it under the full care of adults.
6. The water temperature of the bath is generally between 35-42 degrees. It is better to take a bath for 15-20 minutes.
7. Please drain the water after bathing. Please do not store water for a long time to avoid deformation of the bathtub.



Modification of the machine is prohibited



Make sure that the area is free of sharp objects under or around the bathtub



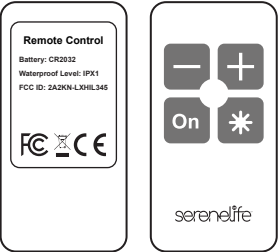
Person using medication should consult a physician before using the bathtub



No child of any age should ever use a bathtub unless supervised by an adult.

BUBBLE BATH PAD INSTALLATION

BATHTUB MAT



MAIN TECHNICAL PARAMETERS

| INFLATABLE BATHTUB | | | | BUBBLE MASSAGE MAT | |
|--------------------|-------------|------|-----------------|--------------------|--|
| Model | SLSPAMT26FB | | | | Main functions: bubble oxygen massages the back of human body, an ion air purification. |
| Voltage | 120V | 120V | Main material | PVC | |
| No-load power | 600W | 120V | Specification 1 | 124*43cm | Suitable for 1.7m bathtub with 104 jets |
| Negative Ion power | 1W | 1W | Specification 2 | 100*43cm | Suitable for 1.5m bathtub with 90 jets |

BATHTUB SUPPORT INSTALLATION METHOD



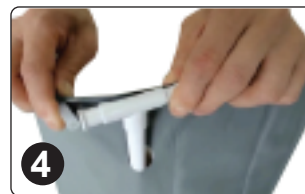
1
Connect the two supports as a whole, and insert the six supports into the support port of the bath barrel in turn.



2
Insert 6 shaped rubber strips in sequence.



3
Slide the connectors on the support respectively to fix the shaping strip of the bath barrel.



4
Slide the connector on the support to fix the whole bath barrel shaping strip and check it.



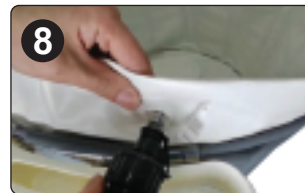
5
Connect the breather pipe to the machine



6
Connect the inflation connector fitting to the vent pipe



7
When installing the shelf, align the notch on the shelf with the bath barrel support frame.



8
Align the inflating accessories with the air ring to inflate the bath barrel, and put the air nozzle cover on the back cover



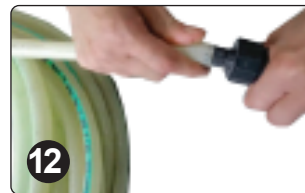
9
Connect the machine firmly with the wave making air inlet of the bath barrel.



10
Place the bath bucket on the hard ground easy to drain and add water.



11
Twist down the vent pipe on the machine as a drain pipe and connect it to the drain of the bath barrel.



12
If you need to extend the drainage pipe, please connect it in this way.

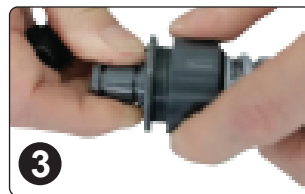
INFLATABLE BATHTUB INSTALLATION METHOD



Machine accessories



Connect the breather pipe to the machine



Connect the inflation connector fitting to the vent pipe



Install the machine and prepare to inflate the bathtub



Connect the minimum air pump to inflate the bathtub back.



First inflate the back of the bathtub



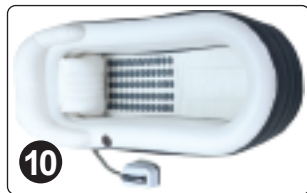
Use the corresponding inflation head to inflate the bathtub body in turn



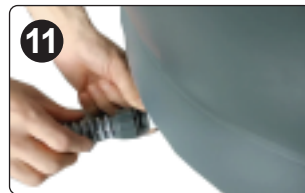
After filling, cover the air nozzle to prevent air leakage



Connect the machine firmly with the wave making air inlet of the bath barrel



Place the bath bucket on the hard ground easy to drain and add water.



Twist down the vent pipe on the machine as a drain pipe and connect it to the drain of the bath barrel



If you need to extend the drainage pipe, please connect it in this way

FCC STATEMENT AND WARNING

FCC STATEMENT

1. This device complies with Part 15 of the FCC Rules. Operation is subject to the following two conditions:

- (1) This device may not cause harmful interference.
- (2) This device must accept any interference received, including interference that may cause undesired operation.

2. Changes or modifications not expressly approved by the party responsible for compliance could void the user's authority to operate the equipment.

NOTE: This equipment has been tested and found to comply with the limits for a Class B digital device, pursuant to Part 15 of the FCC Rules. These limits are designed to provide reasonable protection against harmful interference in a residential installation.

This equipment generates uses and can radiate radio frequency energy and, if not installed and used in accordance with the instructions, may cause harmful interference to radio communications. However, there is no guarantee that interference will not occur in a particular installation. If this equipment does cause harmful interference to radio or television reception, which can be determined by turning the equipment off and on, the user is encouraged to try to correct the interference by one or more of the following measures:

- Reorient or relocate the receiving antenna.
- Increase the separation between the equipment and receiver.
- Connect the equipment into an outlet on a circuit different from that to which the receiver is connected.
- Consult the dealer or an experienced radio/TV technician for help.

RF warning statement:

The device has been evaluated to meet general RF exposure requirement. The device can be used in portable exposure condition without restriction.

WARNING

- This product is not a life-saving appliance. It is forbidden to use it when it is launched into the water.
- Infants and the elderly must be accompanied by adults in the whole process when taking a bath with this product.
- When installing the water tank, the inflation pipe can only be filled with normal air at normal temperature, which can be saturated by 80%.
- When used with the machine, the indoor environment should not be too humid, and the power supply must be equipped with leakage protection device.



Questions? Comments?

We are here to help!

Phone: (1) 718-535-1800

Email: support@pyleusa.com